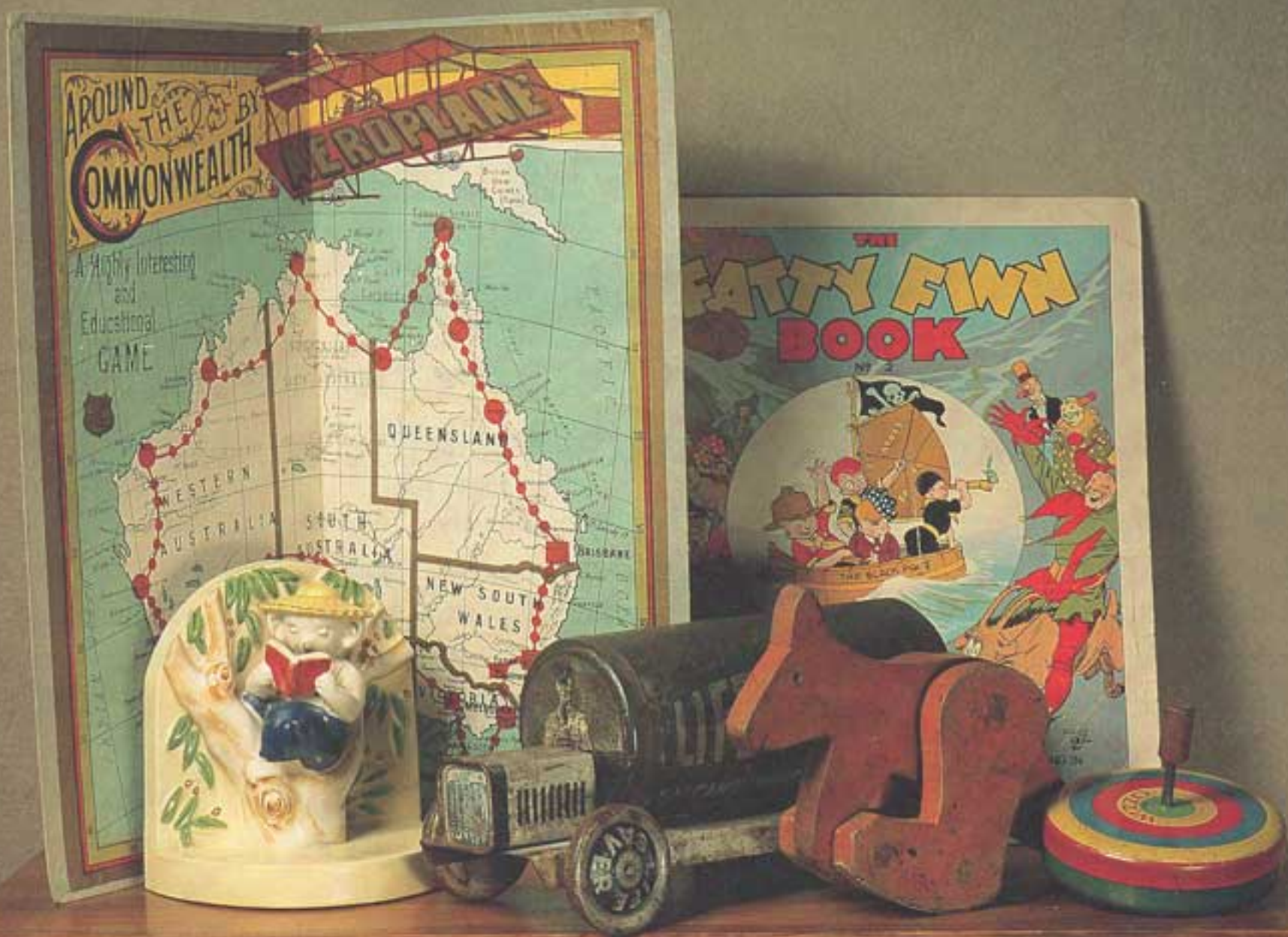


NATIONAL TRUST *Magazine*

Registered by Australia Post Publication No. NBP 2058



**Childhood on show
at Juniper Hall!**



WHO DO YOU KNOW

WHO WOULD LIKE TO BE A MEMBER OF THE NATIONAL TRUST?

To celebrate Australia's Bicentenary the National Trust has embarked on the most exciting conservation programme in its history. The Trust's Bicentennial contribution is the largest community based programme of restoration and education ever undertaken in Australia.

Every member can be part of, and support, the Trust's dynamic programme for 1988. There are many ways in which you can be involved but the easiest — and the best for the National Trust — is to encourage someone to join or to give a gift membership to a family member, friend or colleague.

1988 will be an exciting year for Trust members. It will see the realisation of the Trust's restoration programme and the staging of literally hundreds of heritage activities and events throughout the State.

By signing up one new member you will help the Trust

to continue its conservation work and to complete such important projects as Juniper Hall, Saumarez, Cooma Cottage, Vienna, Miss Traill's House and Dundullimal. You will also help increase the community's awareness of our heritage and the vital role the Trust plays in protecting and enhancing that heritage.

A constantly increasing membership is vital to the ongoing work of the Trust. Membership is the cornerstone of the Trust movement from which it derives much of its financial, political and public support.

If you do nothing else for Australia's Bicentenary at least use the form below — and sign up one new member for the National Trust.

Max Kelly
President



**Sign up one
new member**

APPLICATION(S) FOR MEMBERSHIP(S)

(Please note: this form is for new memberships, not for membership renewal.)

MEMBERSHIP BENEFITS

- National Trust Magazine / 5 issues.
- Free admission to National Trust historic house museums, galleries and other properties throughout Australia and overseas.
- Opportunities to participate in special National Trust activities: Educational tours, house inspections, lectures etc.
- Your subscription assists the National Trust with its heritage conservation work.

MY NAME

ADDRESS

.....POSTCODE

TELEPHONE.....

RECIPIENT'S
NAME (If Gift)

ADDRESS

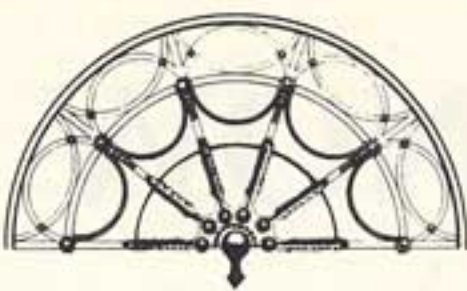
.....POSTCODE

As a Gift

For myself

Myself and gift

Please complete form overleaf



ARCHITECTURAL HERITAGE

Sydney's Restoration Specialists — "First Fleet to Federation"

- **FIREPLACES** — MARBLE, TIMBER, STONE & SLATE.
We offer Sydney's largest stock of totally restored quality chimney pieces.
- **GRATES** — All restored to original condition.
- **DOORS** — Victorian & Federation, leadlight entry ways; 4 & 6 panel, French, etc.
- **WINDOWS** — Leadlight, stained glass and acid etched.
- **WALL PANNELLING** — From UK and Europe.
- **BARS** — Suitable for commercial and domestic application.
- **STREET LAMPS**
- **COLUMNS & LACEWORK**
- **BRASSWARE** — Hand polished original and quality reproduction.
- **FIREPLACE PARTS & ACCESSORIES**
- **EXPERT LEADLIGHT REPAIR SERVICE**
- **MARBLE FIREPLACE RESTORATION & INSTALLATION**



A fine quality Victorian cast-iron garden urn

Showroom and Warehouse:

62 Glebe Point Road, Glebe. Phone: (02) 660 0100

OPEN SEVEN DAYS 10 am — 6 pm



National Trust Membership (Continued from previous page)

Please indicate the category of membership that you require for yourself and/or the recipient of your gift:

<input type="checkbox"/> your membership	<input type="checkbox"/> your gift	<input type="checkbox"/> your membership	<input type="checkbox"/> your gift
<input type="checkbox"/> Individual Membership (\$30)	<input type="checkbox"/> Pensioner Membership (\$18)	<input type="checkbox"/> Household Membership (\$40)	<input type="checkbox"/> Student Membership (\$18)

I ENCLOSE A CHEQUE FOR \$

PLEASE DEBIT: BANKCARD / MASTERCARD / VISA
(strike out those inapplicable)

CARD NUMBER

EXPIRY DATE

CARDHOLDER'S SIGNATURE

<p>RETURNING THIS FORM . . .</p> <p>There is no need to pay postage; simply place this form in an envelope and address it to:</p>	<p>Freepost 80</p> <p>The Membership Secretary</p> <p>National Trust</p> <p>GPO Box 518</p> <p>SYDNEY NSW 2001</p>
--	---



NATIONAL TRUST
MAGAZINE
No. 40 JUNE 1987

PUBLISHED BY
The National Trust
of Australia (NSW),
National Trust Centre,
Observatory Hill,
Sydney, NSW, 2000.
Telephone (02) 27-5374
Telex TRUST AA74260
Fax: 251 1110

PRESIDENT
M.J. Kelly

EXECUTIVE DIRECTOR
P.C. James

MAGAZINE PRODUCTION
Bill Richards
Director, Public Relations
Lisa Marshall
Assistant Editor

FREQUENCY
Issued February, April, June,
September, November

REGISTERED
for posting as a publication
— Category B

ADVERTISING INQUIRIES
Grover Frost Pty Limited
25 Falcon Street,
Crows Nest, NSW, 2065.
Telephone (02) 438-3466

PRINTERS
Bloxxham & Chambers,
1 Leeds Street,
Rhodes, NSW, 2138.

ISSN 0811-0964

The National Trust of Australia
(NSW) is a community organi-
sation which conserves
Australia's built and natural
heritage. Membership is open to
everyone.

Annual subscription rates:
Individual Membership \$30;
Household Membership \$40;
Student Membership \$18;
Pensioner Membership \$18;
School Membership \$30.

COVER: *Part of the Thyne Reid
Australian Childrens Collection.*
Photo: David Liddle
See cover story, Page 10.
news story, Page 5.

CONTENTS

Cover Story: Childrens Museum at Juniper Hall	Page 10
Feature Story: Sydney Cove Redevelopment Authority	12
Trust Annual General Meeting Weekend	15
Personality: Stephen Harris	16
Ticket Application Page	33
Real Estate Service	35

NATIONAL TRUST ACTIVITIES

JULY

Sunday 12	Bastille Day Luncheon <i>Young Trust</i>	31
Tuesday 14	Paddington Day <i>Women's Committee</i>	29
Thursday 16	Thea Proctor Opening <i>Trust Headquarters</i>	20
Saturday 18	North Head Quarantine Station <i>Young Trust</i>	31
Monday 20	National Trust Guardian Course	12
Thursday 23	Winter Garden Seminar <i>Garden Committee</i>	26
	Thea Proctor Lecture <i>Trust Headquarters</i>	20
Friday 24	Cameo Committee Winter Dinner	28
Saturday 25	Winter Weekend Garden Seminar <i>Riverina Regional Committee</i>	28
Sunday 26	North Head Quarantine Station <i>Young Trust</i>	31

AUGUST

Sunday 2	Steam Train Nostalgia <i>Young Trust</i>	31
Sunday 9	Visit Salvatore Zofrea's Studio <i>Friends of the S.H. Ervin Gallery</i>	24
	The National Trust Way to Queensland	25
	North Head Quarantine Station <i>Young Trust</i>	31
Tuesday 11	Double Bay Day <i>Women's Committee</i>	29
Saturday 15	Rocks Archives Visit <i>Young Trust</i>	31
	Sydney's Headland Forts <i>Young Trust</i>	32
Sunday 16	Sydney's Headland Forts <i>Young Trust</i>	32
Wednesday 19	Conservators Lectures <i>Friends of the S.H. Ervin Gallery</i>	24
Wednesday 26	Brilliance of the Macchiaioli <i>Friends of the S.H. Ervin Gallery</i>	24
Saturday 29	Bullawarring Track Walk <i>Young Trust</i>	32
	North Head Quarantine Station <i>Young Trust</i>	31
Sunday 30	Open Day at Wirrimbirra Sanctuary	26
	Sydney's Headland Forts <i>Young Trust</i>	32

SEPTEMBER

Sunday 6	Powerhouse Museum Inspection <i>Young Trust</i>	32
Tuesday 8	Pymble Day <i>Women's Committee</i>	29
Saturday 12	Canowindra Weekend <i>Central West Women's Committee</i>	28
Sunday 13	Sydney's Headland Forts <i>Young Trust</i>	32
Wednesday 16	Potts Point Talk and Tour <i>Tours Co-ordinating Committee</i>	25
Saturday 19	Spring on the Southern Road <i>Friends of the S.H. Ervin Gallery</i>	24
Wednesday 23	Spring Garden Day <i>Garden Committee</i>	27
Wednesday 30	The National Trust Way to Japan	25

OCTOBER

Friday 2	Art in New England Spring <i>Friends of the S.H. Ervin Gallery</i>	24
Saturday 3	Phillips Collection at ANG <i>Friends of the S.H. Ervin Gallery</i>	24
	Weekend in the Monaro <i>Women's Committee</i>	29
Tuesday 13	A Day in Killara <i>Women's Committee</i>	31
Saturday 10	Phillips Collection at ANG <i>Friends of the S.H. Ervin Gallery</i>	24
Wednesday 14	Postman's Run on the Hawkesbury <i>Tours Co-ordinating Committee</i>	25
Friday 16	Trust Annual General Meeting Weekend	15
Sunday 18	National Trust Annual General Meeting	15
	Shoalhaven River Historic Cruise <i>Cameo Committee</i>	28
Wednesday 21	Christmas Around the World <i>Garden Committee</i>	27
	Phillips Collection at ANG <i>Friends of the S.H. Ervin Gallery</i>	24
Saturday 24	Davidson Park Camp-a-long and Bushwalk <i>Young Trust</i>	32



EDITORIAL



Woolloomooloo Wharf

GOVERNMENT DISREGARDS ITS PLANNING LAWS

The decision by the Minister for Ports, Mr Laurie Brereton, to proceed with the development of a new marina in Woolloomooloo Bay and the demolition of the existing historic finger wharf is but the latest indication of the Minister's disregard for the proper planning and environmental assessment process. The Minister's announcement earlier this year totally pre-empts any environmental impact statement which may be prepared. At best, that report, if done at all, will be only a token gesture now that the preferred tender has been selected and announced. The announcement is a blatant breach of the Environmental Planning and Assessment Act.

In 1984 Mr Brereton assured senior Trust officials, in person, that the wharf would be restored and developed as a marina. The wharf is classified by the Trust. Built in 1913, it has for many years been a well-known element of the harbourscape and has strong historical associations with the nation's war effort and with post-war immigration.

The Government has refused to make publicly available the Wharf Restoration Cost Estimates, which are being used as the reason for the decision to demolish this grand structure. The Trust is aware that a recent structural report on the wharf carried out by a leading firm of Sydney Engineers indicates that the wharf is not beyond repair. The National Trust cannot

accept the Minister's claim that the wharf cannot remain, particularly as a financially viable proposal for its repair and retention was put forward in another tender. The selected tender does not even comply with the stated conditions, which included retention and restoration of the wharf.

The Trust is alarmed by the continuing decisions by the NSW Government to award major development projects such as the monorail, harbour tunnel and Woolloomooloo marina without due heed to proper tendering process or environmental planning legislation. New South Wales has one of the best sets of planning legislation in the world. It is a great pity that the very government which enacted this legislation refuses to abide by its own rules.

A STREAMLINED ACT FOR HERITAGE PROTECTION

An Amendment Bill to the New South Wales Heritage Act was passed through the New South Wales Parliament, and consented to, during the week prior to Heritage Week 1987. The Trust congratulates the State Government on the enactment of this Amendment, which will greatly streamline the processes for provision of statutory protection for heritage items. In particular the new Act removes unnecessary bureaucratic processes in relation to the making of Permanent Conservation Orders, in cases where there is no objection from the owner of the property concerned.

The Trust is also delighted at a new requirement that Statutory Authorities each complete an "In-House" Register of heritage items under their control. The Trust will be assisting in the completion of a number of these Registers, through its regular Working Parties with various Government Departments.

A significant change to the Heritage Act involves moveable items of environmental heritage. A "relic" may now refer to a wide range of items over 50 years old. Provision has also been made for the care and management of important artefacts by the Power House Museum. These provisions relate well to recent changes in the Federal legislative area which apply to moveable items (see page 6 for story).

The Amendment requires that applications to carry out work on properties which are subject to conservation instruments will, in the first instance, be made with a local Council. The National Trust is hopeful that this will avoid the confusing situation, which in the past lead to the demolition of buildings, such as Rose's Emporium at Petersham, which were subject to conservation instruments.

With the passing of this Amendment, the Government has a powerful and easily operable set of protective provisions at its command. Used properly, the Act can continue to function as a valuable deterrent or, where necessary as an enforcer. The Trust has recently been assured by Minister Carr that, when necessary, conservation instruments will be made over properties in Government ownership which come under threat. The Trust congratulates the Minister on this attitude and urges him to continue to apply the provisions of the Amended Act without fear or favour whenever this is necessary.



MAJOR MUSEUM FOR RESTORED JUNIPER HALL

The National Trust next year will establish a major Australian Childrens Museum at historic Juniper Hall, Paddington.

As a place for entertainment, learning and plain old good fun, the museum will undoubtedly be a great attraction for Sydney people and visitors from all over the world.

The establishment of this exciting new institution follows the exceedingly generous donation of the Thyne Reid Australian Childrens Collection to the National Trust this month.

The Thyne Reid Collection, skilfully and vigorously assembled over the past five years, was part of the James Hardie Library in Sydney.

While it is still a relatively new collection it has already achieved a national profile through its publications and exhibitions. In its new museum, the collection will continue to be managed by its original Director, Mr Robert Holden.

At the announcement of the donation, the President of the National Trust, Professor Max Kelly, said this was a proud development in the Trust's history.

"The purchase and restoration of Juniper Hall is the biggest project we have ever undertaken," he said.

A NEW DIMENSION

"Built in the 1820s and having remained amazingly well intact since those early years of European settlement on this continent, Juniper Hall is one of Australia's great historic houses.

"We are excited indeed now at the prospect of opening a museum of national importance in a building of such quality."

Professor Kelly said the Australian Childrens Museum will add a new dimension to the National Trust's assemblage of notable buildings and collections.

Members of the Trust will have free admission to the new museum just as they have to the Norman Lindsay Gallery and the S.H. Ervin Gallery, each of which is known for its outstanding exhibitions of artworks, Old Government House with its unrivalled collection of early Australian furniture, and the Trust's wide variety of house museums.

NEWS



Mr John Reid, Chairman, James Hardie Industries Limited.

Juniper Hall was purchased by the Trust in 1984 with financial assistance from the NSW Government through its Bicentennial Council. The property is being restored as part of the National Trust movement's Australia-wide Bicentennial programme *A Gift To The Nation* sponsored by Amatil Limited.

Juniper Hall, with reception rooms on the Ground Floor (Oxford Street) Level and a restaurant and National Trust Shop on the Basement (Underwood Street) Level, is scheduled to be officially opened in April 1988.

The Australian Childrens Museum will be installed later in the year, with an official opening scheduled before the holiday period.

See also: *Juniper Hall Shop Opens* (Page 7), and *A Childrens Museum For Everyone* (Page 10).

RENEWED THREAT FOR GROSVENOR BUILDINGS

Grosvenor Place Pty. Ltd., the developers of the massive office tower near the corner of George and Grosvenor Streets, Sydney, have submitted a development application to Sydney Cove Redevelopment Authority for the demolition of historic buildings on that site to enable the construction of a proposed "Bicentennial Square".

The proposed "Square" - less than the size of the average tennis court in area - would "commemorate significant events of the nation's pioneering beginnings".

The architect of the Grosvenor Place tower, Harry Seidler, has been campaigning for some time for the demolition of the old buildings, and now the developers have sought to justify the proposal by claiming that the site is the "actual site of the colony's original parade ground". A document prepared by the project architects purports to show that all manner of important events occurred on the site.

Three prominent Sydney historians, Mr Robert Irving, President of the Royal Australian Historical Society, Associate Professor Ken Cable of Sydney University, and the Trust President, Max Kelly, an Associate Professor of History at Macquarie University, have strongly criticised the document.

DOCUMENT MISLEADING

"The compilation of documents used by the developers to justify the demolition of buildings listed by the Australian Heritage Commission on the Register of the National Estate cannot be taken seriously", the historian said. "It suggests historical connections by innuendo and is totally devoid of proper historical analysis".

The President has described the report as a "grab-bag of material, obviously assembled by one without professional training in historical analysis. It contains barely a shred of substance pertaining to the actual site in question, and is wholly misleading".

The Trust has been adamant in urging the retention of these buildings, for their architectural value, for their streetscape value, for their human scale and because their retention was part of the original agreement made between the developer and SCRA.

As well as protesting to the Premier, Mr Unsworth, and SCRA's Minister, Mr Carr, it has also informed the Commonwealth Staff Superannuation Fund Investment Trust (which owns 80% of the company

developing Grosvenor Place) that they would breach the Australian Heritage Commission Act if they agree to the proposed demolition as the Edwardian buildings are on the Register of the National Estate.

The Trust will take any steps it can to ensure that the Edwardian buildings are retained.

STOP PRESS: Harry Seidler is likely to be involved in another controversy over historic buildings - he is architect for another proposed tower on the northern side of Hunter Street which would involve the demolition of other old buildings classified by the Trust, protected under the NSW Heritage Act and soon to be listed on the Register of the National Estate.

THREAT TO KIAMA HERITAGE AREA

The Kiama Heritage Precinct proclaimed by the Minister for Planning and Environment, Mr Carr, is under threat by a proposed unsympathetic hotel development in Terralong Street near the Kiama Blow Hole.

Kiama Heritage Precinct contains ten buildings classified by the National Trust. These buildings are a fine group of substantial Victorian and earlier Colonial buildings that provide an important streetscape approach to the centre of Kiama.

The proposal before the Heritage Council is for a large, blank building which sits upon two levels of above ground car parking. The development, if it proceeds, will seriously undermine the setting of, and detract from the historic character of the area.

The Trust's Illawarra Shoalhaven Committee, local members and the Trust head office have all made submissions to the Heritage Council opposing the development. The Heritage Council will consider the proposal and the various submissions made to it before making a recommendation to the Minister, Mr Carr.

It is hoped the Heritage Council will recommend against the development and the Minister will abide by their advice. If not it may be ironical that a hotel built to provide for the tourist Kiama is now attracting will seriously detract from the Heritage Precinct that is one of Kiama's outstanding tourist features.



AMENDMENTS GIVE MOVEABLE ITEMS NEW PROTECTION

Recent State and Federal legislation extends to moveable heritage items the protection already provided for buildings and sites.

The Trust last August jointly hosted a seminar on portable, scientific and technological heritage at the National Trust Centre.

After this, the State Government included protection for "relics" in its amendments to the New South Wales Heritage Act.

This new State legislation complements the Federal "Protection of Moveable Cultural Heritage Act 1986" which is due to be proclaimed sometime this year.

The Federal Act provides protection for Australian cultural objects including works of art, books, furniture, archaeological finds, Government records and other collectibles. The primary aim of this Act is to prevent illegal export.

Under the Act an advisory "National Cultural Heritage Committee" is to be established to advise the Federal Minister for Arts, Heritage and Environment on items of moveable cultural heritage. The committee will also advise on the classification of various classes of items within the master "control list" of items which are subject to the provisions of the Act.

The protection provided to "relics" under the Heritage Amendment Bill of 1987 is more extensive. The term "relic" may refer to a wide range of items over 50 years old — anything ranging from historic railway engines to works of art or small archaeological finds. Excavation or movement of relics can only be carried out when a permit has been issued by the Heritage Council. Provisions have also been made for the compulsory acquisition of moveable items of outstanding heritage importance and their long-term curation and management by the Power House Museum.

The Trust considers that these two pieces of legislation correct a longstanding anomaly in our statutory environment protection provisions. It is encouraging that both Governments have taken positive action which will help conserve this much neglected part of our heritage.



PIONEERS LAUNCH HERITAGE WEEK

Pioneers from the past were enthusiastically greeted by Sydney schoolchildren as they drove their dray into Hyde Park on April 2.

The pioneering family had travelled from Parramatta seeking an "audience" with Governor Macquarie for a land grant. Sydney traffic halted and thousands of lunch time shoppers stopped to watch the pioneers as they made their way towards the Park.

The family had come to help launch Heritage Week 87. They were welcomed officially by Australian of the Year, Mr Dick Smith, before settling down to three days' camping in Hyde Park.

Heritage Week 87 was officially opened by the Premier of NSW, Mr Barrie Unsworth, during the Caltex Heritage Concert at the Macquarie Street Fair. Over 40,000 people attended the Fair, taking advantage of the open day inspections of some of Macquarie Street's major buildings.

One of the major events of the week, the Hunter Valley Steamfest, attracted more than 50,000 to Maitland. When train was pitted against plane in the Steamfest's Great Race, the steam locomotive proved its power by narrowly defeating the Tiger moth.

Another race took place at the same time. The Balmain Vintage Yacht Race saw vessels of yesteryear compete for line honours and the Caltex Cup.

On the last Sunday of Heritage Week, the National Trust held a Conservation Clinic at its Carnival at the National Trust Centre. The Trust also organised



top: Visitors inspect the properties display at the National Trust Carnival, held during Heritage Week.

above: Mr Colin Antill, Caltex oil (Australia) Pty Limited, flags the start of the Sydney to Parramatta Vintage Car Rally.

walking tours of the historic Rocks area for schoolchildren. Talks on the heritage aspects of the Rocks were given before and pupils then followed Trust guide notes on their walks. Many children got into the spirit of Heritage Week by dressing up in traditional costume for the walks.

Over fifty exhibitions were staged throughout NSW for the Week. These included Clyde Snape's photographic exhibition on Sydney in its early days, the Heritage Council of NSW's *Rarely Regarded: The Natural Heritage of New South Wales*, and *West of the Blue Mountains — The first 50 years*, organised by the Antique Arms Collectors Society.

Heritage Week 87 was widely recognised throughout the State with over 400 activities taking place. On behalf of the Heritage Week Committee, the National Trust extends its thanks to the organisations involved in Heritage Week. A special thank

you is extended to the New South Wales Government and to the sponsors of this, a Week of Discovery, Caltex Oil (Australia) Pty Limited.

NEW BRANCH IN BLUE MOUNTAINS

More than 50 people attended a meeting to launch the Blue Mountains Branch of the National Trust.

It was resolved at the launch (in April) that a branch be formed with a committee of 17 elected members.

Office bearers were then elected at the first meeting of the branch on May 11. They are: Chairman — Professor Ian Beveridge, Secretary — Mrs Norah Dennis, and Treasurer — Mrs Eril Jeffries. For information about the branch and details of its next meeting, telephone Mrs Dennis on (047) 57 1031.

QVB ARCHITECTS WIN AUSTRALIAN HERITAGE AWARD

Two Sydney architectural firms have won the 1987 Australian Heritage Award for their contribution to the restoration and redevelopment of the Queen Victoria Building.

The firms, Rice Daubney and Stephenson & Turner (architects in association) won the Award for their "approach to and execution of" the project.

The Award, presented by the Australian Council of National Trusts with the national sponsorship of Jones Lang Wootton, was announced by the Governor-General, Sir Ninian Stephen, on April 10.

Mr. Rodney Davidson, chairman of the Australian Council of National Trusts and chairman of the judging panel, said there had been more than 170 entries for this, the second Australian Heritage Award.

The judges, he said, were delighted with the range and quality of these entries which included many privately restored houses, ceramic murals, a measured drawing competition, museums and many projects addressing problems in the natural environment.

The chairman of the Australian Executive of Jones Lang Wootton, Mr. Hank Schilte, announced that a special Bicentennial Award will be presented next year, in addition to the Australian Heritage Award.

This special award will be his company's contribution to the Bicentennial celebrations.

The category winners this year were:

Government: City of Adelaide Heritage Study, Stage 1 - Corporation of the City of Adelaide.

Private: Potter Foundation Farmland Plan - the Potter Foundation.

Publications: "19th Century Australian Furniture" - Kevin Fahy, Christina and Andrew Simpson; "Ceramics in South Australia 1836-1986" - Noris Ioannou.

Architecture: Queen Victoria Building - Rice Daubney, and Stephenson & Turner.

Media: "This Australia" (magazine) - Greenhouse Publications Pty Ltd.

Nature conservation: Protection of

the natural heritage of the Blue Mountains - Blue Mountains City Council.

Contemporary: Aberdeen Road Bridge, Aberdeen NSW - Department of Main Roads, NSW, and their consultants, McMillan, Britton and Kell Pty Ltd and John Fisher; stained glass windows, Holy Trinity Church, York WA - York Vestry, Holy Trinity Church.

Individual: Dr James Kirkpatrick, nominated by the Tasmanian Conservation Trust Incorporated, for his contribution to the public understanding and appreciation of Tasmania's natural environment.



The Trust conveys its best wishes to Brian Pearson, Chief Bridges Engineer at the DMR, on his retirement.

Mr Pearson was a founding chairman of the Trust's joint Bridges Committee with the DMR. He has assisted the Trust in its efforts to save the Echuca Road and Rail Bridge and was instrumental in the conservation and duplication of the Aberdeen Bridge which won its category in the Australian Heritage Award.

Mr Pearson has been a driving force in the Trust's efforts to establish a co-operative approach to conservation with senior government officials.

CHURCHES DILEMMA TO GET AIRING

On the market in August from National Trust (Victoria) will be a publication designed to be a major contribution toward dealing with the historic churches problems in Australia. Called *Conflict and Reconciliation - The Future of Our Historic Churches*, the book is based on papers presented at a seminar at Melbourne University by a diverse group of speakers ranging from leading churchmen and architectural historians to laymen experienced with the bricks and mortar aspect. The book will be in soft cover, profusely illustrated, and will retail at \$14.95.



Miss Leslie Bridle cuts the ribbon at the new Juniper Hall shop, watched by the Trust President, Professor Max Kelly (light suit), the Executive Director, Mr Peter James (left) and Trust staff.

JUNIPER HALL SHOP OPENS

Paddington identity Miss Leslie Bridle, a long time supporter of the Trust, cut a ceremonial ribbon on Wednesday, May 6, to officially open the Trust's new shop in historic Juniper Hall.

The shop has a frontage to Underwood Street, just off Oxford Street in the Paddington shopping centre.

Miss Bridle, who has actively supported the Trust for many years, said it was an honour for her to open the shop. She had been aware of the historical importance

of Juniper Hall for a long time, and she was relieved when the building was purchased by the Trust for restoration.

"I hope the shop will succeed, and raise a lot of money for this important conservation project. I feel sure it will", she said.

The shop is located in the former basement area. Attractively decorated, it carries a wide range of books and distinctive National Trust gift items. The shop is open Monday to Saturday, 10 am-5.30 pm. Telephone (02) 331 6947.

NOTICE OF THE TRUST ANNUAL GENERAL MEETING

Notice is hereby given that the Annual General Meeting of the National Trust of Australia (NSW) will be held at the Tamworth Services Club, 199 Marius Street, Tamworth, on Sunday, October 18 commencing at 11 am.

The Rules provide that any members wishing to bring for-

ward a motion at the meeting should forward notice in writing to the Executive Director at the Trust Centre not less than 42 days before the meeting. The notice, signed by the member and another member as seconder, must state the exact words of the motion. The closing date this year for such notices will be Sunday, September 6 at 5 pm.

NOMINATIONS FOR THE TRUST COUNCIL ELECTIONS

In accordance with the Rules of the Trust, nominations for election to the Trust Council must be lodged at the National Trust Centre, Observatory Hill, not later than 5 pm on Sunday, August 9. Nomination forms are available from the Trust Centre. The Council of the Trust consists of 27 Councillors of whom 15 are elected by the members, 2 are ex-

officio and 10 are appointed by various institutions specified in the National Trust Act.

Candidates are requested to provide a photograph and a paragraph of autobiographical information, no more than 50 words in length.

R.J.W. d'Apice
Honorary Secretary



NATIONAL TRUST SHOPS

National Trust shops offer a range of popular Australian-made gift items as well as National Trust publications, Calendars, Desk Diaries and other stationery.

Sydney

- National Trust Centre, Observatory Hill.
Open Mon to Fri, 9 am-5 pm;
Sat, Sun, 2 pm-5 pm.
Inquiries: National Trust Centre
(02) 27 5374.
- Gallery Level Two, Queen Victoria Building.
Open seven days a week.
Inquiries: (02) 261 2963.

Paddington

- Juniper Hall Shop, Underwood Street.
Open Mon to Sat, 10 am-5.30 pm;
Inquiries: (02) 331 6947.

Pymble*

- 961 Pacific Highway.
Open Mon to Fri, 9 am-4.30 pm;
Sat, 9 am-12 noon.
Inquiries: (02) 44 1780.

Double Bay*

- Roma Arcade.
Open Mon to Fri, 9 am-5 pm;
Sat, 9 am-1 pm.
Inquiries: (02) 327 4375.

Chatswood*

- Gallery Level, Wallaceway.
Open Mon to Fri, 9 am-4.30 pm;
Sat, 9 am-12.30 pm.
Inquiries: (02) 411 4984.

Parramatta

- Old Government House, Parramatta Park.
Open Tues, Wed, Thurs, Sun and Public Holidays, 10 am-4.15 pm.
Inquiries: (02) 635 8149.

Newcastle

- Hunter Heritage Centre, Hunter Street.
Open Mon to Fri, 10 am-4 pm.
Inquiries: (049) 26 1561.

Berrima

- Harper's House, Wilkinson Street.
Open Sat, Sun, Mon, 11 am-4 pm.
Inquiries: (048) 77 1501.

GIFTS-IN-A-BASKET

The Gifts-In-A-Basket shops cater for all tastes by delivering baskets filled with unusual gifts suited to all occasions. There are two Gifts-In-A-Basket shops:

- Double Bay* 7 Roma Arcade.
Open Mon to Fri, 9 am-4.30 pm.
Inquiries: (02) 327 5477.
- Pymble* 963 Pacific Highway.
Open Mon to Fri, 9 am-4.30 pm;
Sat, 9 am-12 noon.
Inquiries: (02) 44 7947.
- * Run by the Women's Committee.

RECENT CLASSIFICATIONS



(left): The sarcophagus containing William Carss, his wife Helen and two of their children, at Carss Bush Park.

(above): Carss Cottage, Carss Bush Park, dates from 1863.

KOGARAH PARK HAS LINKS WITH PIONEER FAMILY

The National Trust has classified an urban park, an early stone cottage and one of the few solitary burial vaults standing in the Sydney region — all at the one location.

Carss Bush Park, at Blakehurst, contains the home and the grave of William Carss, who came to Australia from Scotland in 1831 under the auspices of the Reverend John Dunmore Lang. A cabinet-maker by trade, Carss later became a publican and managed several inner-city pubs.

In the early 1860s, Carss acquired the area of land now known as Carss Bush Park bordering on modern day Kogarah Bay. (The land was originally part of a grant to Jonathan Crofts.) His country retreat, Carss Cottage, was completed there in 1863.

It was built from sandstone blocks quarried on site by stonemasons who had previously worked on Sydney University buildings. L-shaped in plan, the cottage is part of the early settlement of the Kogarah district. Its outbuildings, now demolished, included a kitchen, larder, coach house and stables.

When Carss died in 1878, the cottage passed to his daughter Mary Coxhead. She lived there until her death in 1916 and the property was willed to the Sydney Sailors' Home.

In 1923 Carss Bush Park and Cottage were bought by Kogarah Council on the condition the name Carss was preserved. Of the 119 acres of the estate, 43 were retained for public recreation. The remainder was subdivided into 350 housing lots.

Kogarah Council made several modifications to the cottage such as adding an enclosed verandah, refurbishing parts of the interior and replacing original windows with leadlight glass. Despite these, the house remains in good condition and is a significant example of an 1860s country retreat. It was handed over to the Kogarah Historical Society in 1971 for use as a museum.

William Carss is interred in a sarcophagus some distance from the cottage he built. The grave also contains his wife, Helen, and two of their infant children, all three of whom died previously. The scale and grandeur of this sarcophagus, together with an impressive wrought iron fence surround, contrast greatly with the modest appearance of the cottage.

Besides the cottage and sarcophagus, Carss Bush Park has other features that make it significant. It contains remnant bushland with such species as Blackbutt, Sydney Red Gum and Scribbly Gum.

The recreational value of the park to generations past can be seen in the remaining tidal baths and a sandstone bridge, wall borders and terraces.

Unfortunately, obtrusive structures such as a kiosk and amenities block have been built. The Trust has made recommendations for the replacement of park furniture and signs with those more sympathetic to the history of the park.

CORAKI URBAN CONSERVATION AREA

Coraki, at the junction of the Richmond and Wilson Rivers on the North Coast, was once the site of a prosperous boat building industry, established by William Yabsley in the 1850s and 60s. The town grew to be an important river port and shipping centre by the 1880s, supported by boatbuilding, timber, shipping and agriculture. Its eventual decline as a river port came with the establishment of the railway at nearby Casino.

The main street of Coraki, Richmond Terrace, runs along the high bank of Richmond River.

Richmond Terrace has a strong commercial character enhanced by prominent two-storey hotels, the former Court House and the Post Office. Within the Area are some important buildings classified by the Trust. These include the ANZ Bank, the former Woodburn Shire Council Chambers, the St Joseph's Catholic Church Group and Yabsley House, a large timber Federation house.



MACARTHUR PARK, CAMDEN

Officially opened in 1906, Macarthur Park is part of a land grant known as North Camden made to John Macarthur in 1825.

This exceptionally well-maintained park contains a number of characteristic structures including a shelter shed built to honour Macarthur's grand-daughter Mrs Elizabeth Macarthur Onslow who donated the land on which the park was established. There is also a stone drinking fountain (1912), a World War I memorial consisting of a sandstone gate, cenotaph and three field guns, and a sundial within the rose garden.

One of the conditions of Mrs Macarthur's grant was that all natural timber on the land (ironbarks) were to be preserved as much as possible. As a result, a stand of narrow-leaved ironbark, exceeding 30 metres in height in some places, remains as part of the park's original vegetation.

The wooden border rail fence and wooden gates, erected when the park was established, have been retained. Macarthur Park remains an aesthetically pleasing and predominant park over the township of Camden.



Caroline Chisolm's Barracks.

HOUSE FORMERLY CAROLINE CHISOLM'S BARRACKS

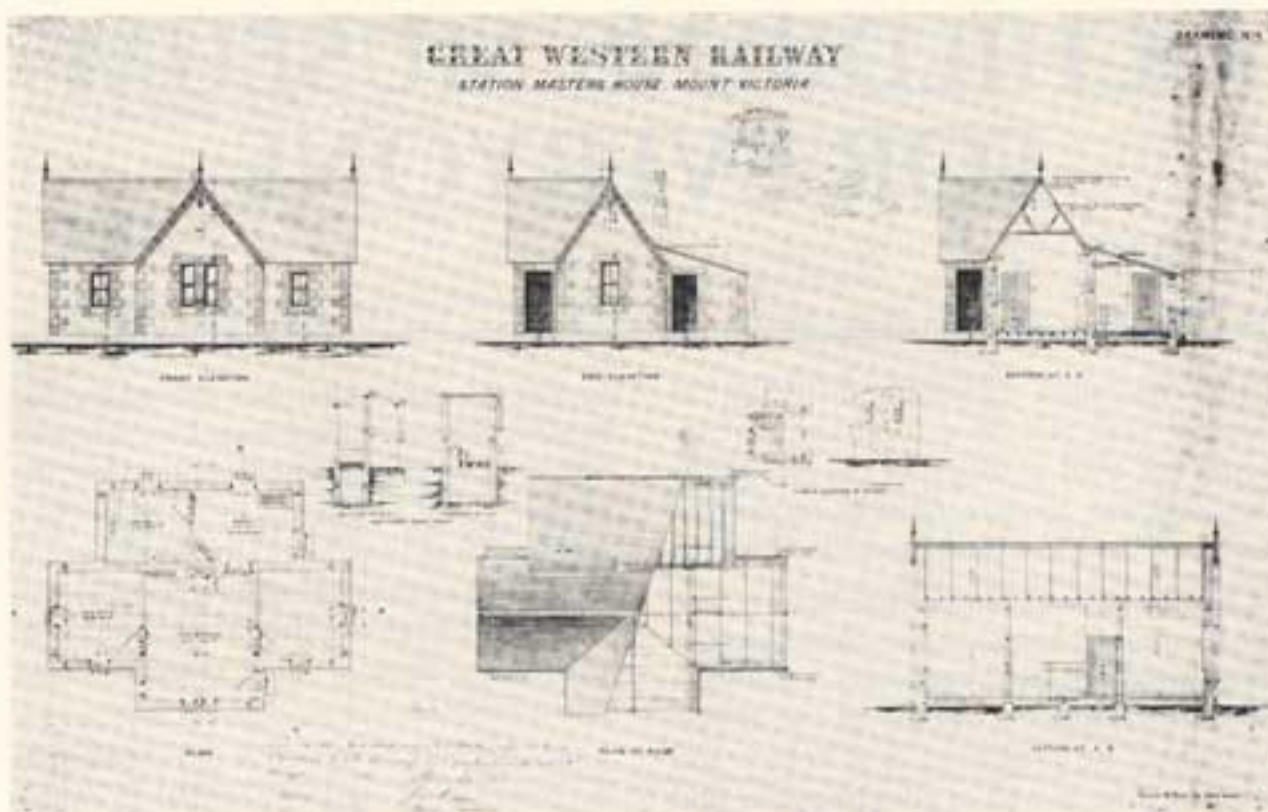
This is the only building associated with Caroline Chisolm known to still survive. Mrs Chisolm is remembered for her work setting up hostels for immigrant women in N.S.W.

Built in Maitland around 1831-1835, the five cottage terrace was rented to workers within the vicinity. In March, 1842 an organisation managed by Mrs Chisolm rented two of the cottages for use as a hostel for homeless immigrants who travelled to the area seeking work. The hostel became a hospital also for sick immigrants and then for other sick people.

When the demand for medical attention became so great, the hostel was converted to a medical hospital in November, 1842. Almost a year later, the size of the cottages proved too small and the hospital was moved to a new location.

In 1854, the property containing the cottages was subdivided. One of the cottages which Mrs Chisolm used was sold and subsequently occupied by families in the locality.

Although generally in poor condition, the original features of the building are still evident. The cottages were constructed from local materials, with the floors built of timber and the exterior walls of sandstone. Caroline Chisolm's Barracks remain one of the oldest buildings in the district.



The plans for the Blue Mountains gatehouses were based on this plan of a station masters house. Photo: State Rail Authority.

FORMER RAILWAY GATEHOUSES BLUE MOUNTAINS

When the Great Western Railway was constructed across the Blue Mountains in 1867-68, the narrow ridges in some parts made it necessary for the road and railway to run close together. At the points where the road had to cross the line, level crossings, and in some cases gatehouses, were built.

Along the line there were twelve major crossings and at eleven of these gothic style sandstone gatehouses were built for the gatekeepers. Although small, the gatehouses are a well-known feature of the railway line and show the high standards of any construction associated with the railways in the 1860s.

Six of the gatehouses remain. Of these — at Lapstone, Valley Heights, Springwood, Lawson, Medlow Bath and Mount Victoria — the Medlow Bath gatehouse is probably the most intact example.

Because the Blue Mountains gatehouses were a part of the larger railway system, their fate was ultimately decided by the development

of this system. When the Blue Mountains line was duplicated in 1902, overbridges were provided. These bridges replaced the level crossings, the gatehouses were no longer required and many were removed as their location interfered with the new line.

GREENWOOD, ST IVES

One of the oldest surviving houses on the upper North Shore, Greenwood is a simple, four room mid-Victorian cottage.

Formerly known as Rosedale House, the cottage is thought to have been built in the 1870s by the Lane Cove timber merchant Thomas Brown. Brown worked in a saw pit nearby and the bushland adjoining the cottage was at one stage called Brown's Forest.

Greenwood is built of picked sandstone and stands on a land grant originally made to Daniel Dering Mathew in 1838. During the early 1940s Greenwood's garden was laid out by the well-known landscape architect Jocelyn Brown.

TYRRELL'S BOOK SHOP
has available supplies
of Australiana,
Antiquarian Books,
Historical Works,
Literature, Classics,
Biographies,
Travel Books.

We also welcome enquiries
for out of print books.

Tyrrell's Book Shop
ESTABLISHED 1909
328 Pacific Highway Crows Nest NSW 2065 Australia
Telephone 438 5920 439 3658

D.S. MURRAY PTY. LTD.
Bookbinders and Restorers
Est. 1883

- Specialising in the restoration of OLD and RARE books.
- Traditional methods and materials of fine quality.
- Special commissions.
- Fine Bindings and Gold Finishing.

We are happy to give individual estimates

HOURS OF TRADING:
8.30 am to 5.30 pm, Monday to Friday

**9th Floor, Gowings Building
45 Market Street, Sydney 2000.
Telephone: (02) 264 5410**



A CHILDRENS MUSEUM FOR EVERYONE

The Australian Childrens Museum at Juniper Hall will be a focal point of interest for a lot of different people: adults and children, tourists, families on outings and serious students of Australian history.

It will be housed on the first floor where one suite of rooms, in the oldest part of the building, will provide exhibition space and adjacent rooms in the 1890's wing will be presented as a library and reading area as well as administrative and storage space.

The Thyne Reid Australian Childrens Collection which was acquired by the National Trust this month (see news story, Page 5) comprises more than 2,000 items, ranging from large toys on which children sit and ride to ephemeral board games, from sturdy books to fragile prints and early postcards.

And as the word "Australian" in its title connotes, the collection relates to childhood in this country. The items are all distinctively Australian.

APPROPRIATE USE

The collection is presently housed in the James Hardie Library in York Street, Sydney, where a large part of it is beautifully presented in illuminated glass-fronted cedar cabinets and display cases. This furniture along with its matching reading tables, chairs and wall panelling will be incorporated in the new museum.

James Hardie Industries Ltd has generously made this furniture available and has agreed in other ways to assist the relocation of the Thyne Reid Collection as part of the company's centennial celebrations.

It's appropriate that Juniper Hall should house a major childrens museum. The building was constructed in 1824 by distiller Robert Cooper as a home for his large family. He extended the house in the 1840s... not surprisingly, for he married three times and had a total of 28 children.

And Juniper Hall's association with children did not end with the Cooper family's moving out in 1852. From 1852 to 1858 the building was leased by the Society for Relief of Destitute Children for use as a home for "abandoned or destitute" children; and in the 1860s and 70s it was twice used as a Ladies College, from 1867 to 1869 and from 1873 to 1879.

In 1884 Juniper Hall was leased by the State Childrens Relief Board for use as a home. The Government purchased the property the following year, building a substantial new wing on the Underwood Street side of the old building in 1891 and 1892, and retaining the property for this use until selling it to a private owner again in 1921.

Juniper Hall then served at different times as commercial and residential premises until its purchase in 1984 by the National Trust. Next year, with the opening of the Australian Childrens Museum, the children will be back.

The establishment of the Thyne Reid Australian Childrens Collection in 1982 filled an obvious gap in museum collections in this country. It had been lamented that Australia did not have a publicly accessible collection of Australian childrens books, illustrations, games, music, text books, toys and juvenilia to compare with those of the Museums of Childhood in Edinburgh, Glasgow, London, Boston and elsewhere.

In 1982, for example, the Childrens Literature Research Group, an affiliate of the Library Association of Australia, presented a comprehensive report on the unco-ordinated and uncomprehensive state of collections of such material: "At no time have the childrens and school librarians in this State had ready access to the resources of a comprehensive and centralised research collection..."

With a determined acquisition policy and an equally committed exhibition profile, the Thyne Reid Collection has assumed a position of national importance and it will provide an extremely sound foundation for the new National Trust museum.

The genesis of the collection was the purchase of a select number of rare Australian childrens books from the antiquarian book dealer Anne McCormick in 1982. This core collection consisted of approximately 600 items ranging chronologically from the first children's book published in Australia *A mother's offering to her children*, by Charlotte Barton (Sydney, 1841) — to the first edition of the last great Australian childrens picture book published before the 1970s revival of this genre — *The way of the whirlwind*, by Mary & Elizabeth Durack (Sydney, 1941).

CHILDREN'S BOOKS

Within that 100 year time span the origins and development of an indigenous publishing industry as well as its competitive overseas counterpart which provided almost all the reading matter for Australian youth until at least the 1920s can be traced and compared.

The bulk of the Childrens Collection's original purchase was, not surprisingly, 20th Century material and it concentrated on illustrated books and picture books. This section has been expanded and consolidated over the past five years into a most comprehensive holding. First edition books illustrated and sometimes written by such people as May Gibbs, Ida Rentoul Outhwaite, Dorothy Wall, the Lindsays and Pixie O'Harris, were all present although their work in the collection today includes a surprising range of ephemera: calendars, handkerchiefs, posters, school texts, advertising brochures, greeting cards and postcards.



Mr Robert Holden, Director of the Australian Childrens Collection, at the James Hardie Library.



The most significant addition to the collection has been original illustrations from Australian children's books. Previously, this area of collecting had not generally been comprehensively represented in Australian libraries. The Thyne Reid Collection now consists of almost 350 items of original artwork from the early 1900s to the present day with a marked preponderance of works from the first quarter of the century.

FAMOUS ILLUSTRATORS

Illustrators represented include Stephen Axelsen, Kerry Argent, Pamela Allen, Jimmy Bancks, Karna Birmingham, Margaret Clark, Connie Christie, Nora Heysen, Brownie Downing, Elizabeth Durack, Harold Gaze, May Gibbs, Ruby Lindsay, Lionel Lindsay, Norman Lindsay, Raymond McGrath, Celeste Mass, Peg Maltby, Ethel Jackson Morris, Deborah Niland, Pixie O'Harris, Ida Rentoul Outhwaite, Muriel Pernet, Ester and Betty Paterson, Charlotte Thoedy, Percy Trezise, Julie Vivas, Dorothy Wall, Ruby Winckler and Christian Yandell.



Two toys of the 1920s: a home-made train and manufactured rocking horse.

Another major developing area of the collection, less spectacular than that just discussed, but nonetheless of great, if undiscovered, potential is 19th Century Australian school text books and educational writings. The bibliographical research potential alone in this area is great as are its claims to engage the interest of education and social historians.

Other significant, if small, areas of the Collection which are being added to slowly but methodically are plays for children (including 19th Century pantomimes), songs and music, Australian A.B.C.s and E.W. Cole's publications. One other area of unique collecting interest is Australian children's board games.

At the present time the Collection contains over 120 such games dating from 1796 to the present day. This area of



A selection of toys and other juvenilia in the Thyne Reid Australian Childrens Collection at the James Hardie Library.

juvenilia has never before been accorded the collecting interest it attracts overseas and an exhibition now touring Australia was mounted last year.

This exhibition was, in fact, but one in a line of significant exhibitions which have taken the Collection out of its cloistered setting and into the Australian community. The first of these was a modest joining of forces with the Childrens Literature Research Collection in the State Library of South Australia for the Adelaide Festival in March 1984.

Later that same year a centrepiece exhibition showing the range of rare Australian childrens books was included in the Childrens Book Council of Australia's Sydney Fair.

Thereafter an exhibition entitled *The Fantasy World of May Gibbs* was shown in the Sydney Botanic Gardens Gallery over Christmas 1984. Its popularity (120,000 visitors!) was assured by the inclusion of 65 original May Gibbs illustrations borrowed from the Mitchell Library augmented by May Gibbs first editions, postcards, text books, ephemera, handkerchiefs, posters, calendars and bookmarks from the Thyne Reid Collection.

Two exhibitions for the Powerhouse Museum entitled *Picture the Kangaroo* and *Picture the Koala* gave a light-hearted look at the images of these animals in Australian childrens books and together may be touring to Japan in the near future.

The first exhibition curated for the S.H. Ervin Gallery was *The Golden Age of Australian Fantasy: Childrens Book Illustration 1910-1950* in late 1985. This exhibition which was timed to coincide with the launching of *The Fairy World of Ida Rentoul Outhwaite* (Sydney, 1985) featured the work of 13 Australian Childrens book illustrators. At least two of these were "discoveries" by the Library; illustrators who had been totally forgotten and whose work had not been seen for over 50 years.

The most recent exhibition was a *65th Birthday Celebration for Ginger Meggs* which opened in Sydney last Christmas and is currently on show in Queensland.

FIRST EXHIBITION

The most ambitious exhibition is one planned for 1988. *A Century of Australian Childrens Book Illustration*, originated from an invitation to mark the 25th anniversary of the Bologna Childrens Book Fair with a significant event. After opening in April 1988 this exhibition will show in Paris at the Australian Embassy and then, by invitation, at the Victoria and Albert Museum, London.

Contemporary illustrators are being invited to submit their work for possible inclusion and to complement the historical component showing a century of development and appeal. This exhibition will open the new Museum in Juniper Hall on its return in October, 1988.



Sydney's historic Rocks District is not at all what it first appears to be, says Janet Thomson, someone who knows it better than most.

Mrs Thomson is a former Assistant Director with the NSW Department of Environment and Planning and a town planner who has worked in a wide range of government agencies in England, Australia and New Zealand. Since September 1985 she has been Deputy Chairman and Director of the Sydney Cove Redevelopment Authority, the NSW Government agency that manages the Rocks.

"When I came to this job I thought I knew the Rocks pretty well," she says. "Like most people, I had been here a few times, and I knew it as an interesting little part of Sydney."

"Now I see it as a vast area, full of interesting architectural details and townscape features. Even after all this time I discover new things every time I walk around."

The SCRA area extends from Dawes Point under the Harbour Bridge in the north to Grosvenor Street in the south, from the western shore of Circular Quay and George Street on the east to the Harbour Bridge and Bradfield Highway on the west.

SCRA was established by Act of

NEW ACTIVITY IN SYDNEY'S OLD ROCKS



Janet Thomson

Parliament in 1968 as an authority to acquire property and to restore, renovate and redevelop the area within its boundary. In addition, the Act made SCRA responsible for the raising of its own funds by renting its properties and/or borrowing.

The statutory requirement for SCRA to

raise its funds has long been criticised by the National Trust, for it has promoted SCRA to allow environmentally insensitive development in order to chase the large debts it has accrued over the years.

The Trust has argued that the Rocks is a district of heritage value not only to Sydney but also to New South Wales and Australia. The cost of heritage conservation in this historic area should not be penalised by SCRA having to service debts it did not wish to incur.

Mrs Thomson agrees that the reduction of SCRA's debt, which stood at a little over \$100 million at the end of the 1986 financial year, is the authority's most pressing objective. But here she considers, all is going well; the debt she says, *will* be reduced within five or six years to a level where it can be managed comfortably.

What *has* been happening in the Rocks, and what - if anything - *could* go wrong to prevent SCRA reaching its Director's financial objective?

Soon after Mrs Thomson's appointment, SCRA took a new interest in Public Relations. To its staff of more than 30 people, it appointed its first full-time PR manager. It then commissioned some fairly intensive research among Sydney residents to determine who visits the Rocks and why.

The study showed that very few people (6% of respondents) had never visited the

The Private Collection of Dr John Buttsworth

will be offered
on Saturday 1 August
to Monday 3 August 1987



A magnificent rare early colonial solid cedar sideboard c.1835, also illustrated in "Nineteenth Century Australian Furniture", Fig. 144 - together with 40 other exceptional early Australian colonial pieces, many illustrated in definitive publications, and including signed pieces by Jones, Lenehan, Norman & Broomfield, Sly and Whitesides.

Entry by catalogue only.

Reserve your copy of this authoritative book, "The Collector's Handbook & Catalogue" - a major publication - \$25 including postage and handling.

**THE COLONIAL LIVING
ANTIQUARY GALLERY**
Rare Colonial Furniture

106 Victoria Road, Drummoyne 2047
Telephone (02) 819 7416



Rocks, while a very significant number (55%) had visited the area at least once in the previous year. Most people go there to have a meal or a drink (35%) or for general sightseeing (26%). While there, the most popular activity is "looking in the shops" and despite the historic nature of the area, fewer than half of the respondents had visited an historic building.

Armed with the results of its research, SCRA is launching initiatives for its visitors, for example, by providing a fast-food outlet or two for families who come into the area, by commissioning a corporate identity study which will lead to more distinctive and useful signage, and by suggesting a rationalisation of shopping hours in the area.

The Rocks Visitors' Centre has been refurbished, currently exhibiting a new and comprehensive pictorial display on the history of the Rocks, highlighting evolution of government plans for the district's conservation and redevelopment.

And SCRA is gearing up to undertake its first "real" architectural conservation project.

"Until now, what we have been doing with our early buildings, essentially, is showing how you can recycle structures and keep their historical character," Mrs Thomson says.

"We've decided now that we should do a proper historical restoration in the area, so we've joined with the Historic Houses Trust to restore the Susannah Terrace group in Gloucester Street.

"This is a group of three worker's cottages and a corner shop, and we will be setting it up as a house museum."

The Trust welcomes this project as most buildings conserved as house museums are the houses of the wealthy rather than the workers, and this will help to redress the balance.

Mrs Thomson says SCRA's research confirms that tourists want to visit and indeed stay overnight in the Rocks, and the authority's development plans include the provision of more tourist accommodation in the area.

A new hotel will be built in Harrington Street, incorporating the old three-storey Evans Warehouse and Stores (1890s) and nearby cottages, and another four-storey luxury hotel will be built at Campbell's Cove. There will be serviced apartments as well as offices and shops in the new building at the corner of Argyle and Harrington Streets.

These however are not the controversial developments within SCRA's area. One of the more debatable proposals on en-



George Street, The Rocks.

vironmental grounds is the nine-storey building to be constructed just north of the Cahill Expressway on George Street. Critics of the proposal, including the National Trust, believe it will seriously interrupt the views from Cahill Expressway of the Rocks and the harbour.

And then there is the area south of the Cahill Expressway, which has been the subject of even more disagreement and debate. In the south-east corner is the near complete Grosvenor Place skyscraper block, and the attendant fight for the future of the fine Edwardian buildings at the corner of Grosvenor and George Streets.

(For an update of this, see story, Page 5.)

Elsewhere in the SCRA area south of the Cahill Expressway there is uncertainty. Some four years ago SCRA commissioned a set of proposals for the redevelopment of these blocks bounded by George, Grosvenor and Harrington Streets.

The proposals were less than favourably received by the National Trust and other bodies for several reasons including the scale of some of the new buildings and the general impact on the existing townscape.

SCRA has now commissioned a review of these proposals, and revised plans will be placed on view for comment shortly.

It's this area south of the Cahill Expressway, where the future is still indefinite, that holds the key to the future of the Rocks. It's here that SCRA has to make the funds to bring its debt under control.

The Trust, along with many other interested organisations, will consider the new plans carefully when they are placed on display, and convey its comments to SCRA.

Hopefully, the desires for sensible development and conservation will be reconciled. For so many reasons, so much depends on the future strategies for this corner of the city.

Art Gilding

Repair, restoration, oil and water gilding

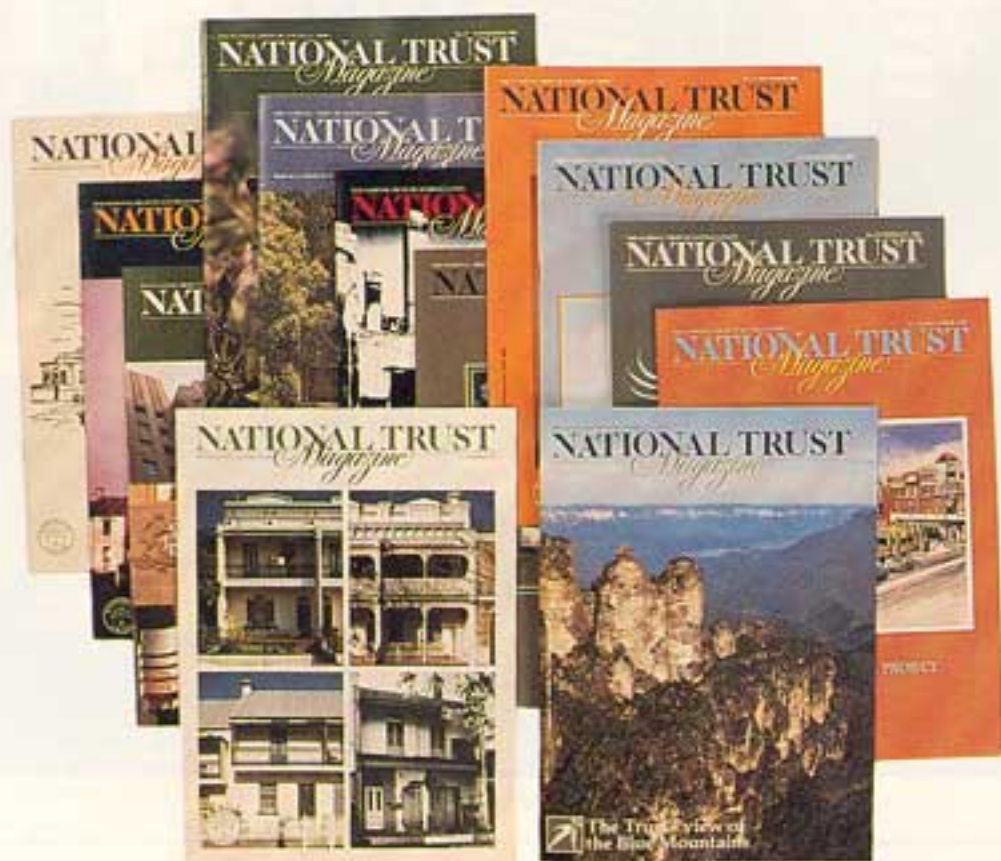
We respect the patina of age and recreate it on newly gilded pieces.

Please phone us for friendly advice on 519 9701

71 Sutton Street, Alexandria, NSW 2015.



YOUR MAGAZINE'S 40th ISSUE



This is the 40th issue of *National Trust Magazine* which was launched in September 1979 replacing a much smaller (19 cm x 22.5 cm), thinner single-colour newsletter, the *Bulletin*.

As you know, the *Magazine* keeps members up to date on heritage conservation news, it presents background stories, Trust gallery previews, book reviews, and it carries information on the wide range of services and special activities available to members.

It's read by members in NSW, in other States and in other parts of the world; it's monitored by politicians; it's exchanged with the journals of similar organisations in Australia and overseas; it's filed in many public libraries and even recorded on tape by the Royal Blind Society.

National Trust Magazine is one of the major benefits of membership of the Trust. You can help the Trust by encouraging others to join. Show a friend your copy of the *Magazine* . . . there's a Membership Form on Page 1.

A COLLECTION OF 20TH CENTURY AUSTRALIAN PAINTINGS

18 June to 9 July 1987

An exhibition
to commemorate the opening of
our new private gallery at
156 Hargrave Street, Paddington



ARTHUR BOYD *The White Cockatoo*
Oil on board, 68 x 86.8 cm

Gallery hours during the exhibition
Monday to Friday, 11am to 6pm
Saturday, 12 to 5pm

SAVILL
GALLERIES

156 Hargrave Street,
Paddington, N.S.W. 2021
Telephone (02) 327 8311, 327 7575



AGM WEEKEND

AGM INFORMATION CENTRE

Tamworth's historic Mechanics Institute building, part of which will serve as a visitors' information office, during the Trust's AGM weekend, has been saved from the immediate threat of demolition by the placement of a second Interim Conservation Order.

The building, in Brisbane Street, had a two year Interim Conservation Order put on it in May 1985 when it was threatened by a proposed multi-million dollar shopping complex.

Before that order expired on May 24, another order, of 12 months duration, was decreed by the Minister for Planning and Environment, Mr Bob Carr, with a view to consideration of a Permanent Conservation Order for the building.

The Mechanics Institute (c.1856) is the fourth oldest building left standing in Tamworth. Built only 32 years after the town was founded, the Institute is still being used for its original purpose as a centre for education.

For the weekend of the Trust's Annual General Meeting, (October 16 to 18), an information office will be housed in the Mechanics Institute and run by the Tamworth Branch. If you have any problems or inquiries about the AGM or want further information of the city of Tamworth, you can visit the office at 81 Brisbane Street or telephone (067) 66 3860.

ANNUAL GENERAL MEETING TAMWORTH WEEKEND

Saturday and Sunday, October 17-18

In 1832-33, the Australian Agricultural Company was granted 313,000 acres of land incorporating the western bank of the Peel River. A village appeared and in 1835 was named Tamworth, after the Staffordshire town which the British Prime Minister, Sir Robert Peel, represented. Tamworth steadily grew, and with the discovery of gold in 1851, its development was assured.

The property inspections and activities for this AGM weekend have been organised by the Tamworth Branch of the National Trust in conjunction with the New England Regional Committee. The New England Region has the second largest regional Trust membership in NSW.

Saturday:

Loomberah, 150 Carthage Street, Tamworth, by courtesy of Mr and Mrs S.N. Hall. This Victorian house was built in 1880.

Shield Hill, 32 Upper Street, Tamworth, by courtesy of Dr and Mrs G.P. Hibbard. Originally the home of Tamworth Police Magistrate, David Irving, *Shield Hill* was built in 1877-1879.

Goonoo Goonoo outbuildings, 26 km south of Tamworth on New England Highway, by courtesy of Mr and Mrs Lord. This is one of the oldest stations in the Tamworth region. The outbuildings open for inspection have been classified by the Trust.

Bective, approximately 30 km from Tamworth on Gunnedah Road, by courtesy of J.R. Vickery. Bective Station was settled by Robert Pringle in the 1840s. Today's inspection will be of *Bective's* homestead and outbuildings.

Cost: Property inspections and lunch is \$22 per person.

Dinner: 7.30 pm, Tamworth Services Club. Lionel Gilbert, the very entertaining author and historian, will be guest speaker. His subject — *Whom can we Nationally Trust?* Cost: including pre-dinner drinks and wine or soft drinks with dinner is \$30 per person.

Sunday:

Tamworth Historical Society Museum *Calala*, 142 Denison Street, West Tamworth, by courtesy of the Tamworth Historical Society.

Minnamurra House, 69 White Street, Tamworth by courtesy of Mr and Mrs A.W.J. Rhodes. Built in 1896.

Old Dominican Convent Building, Marius Street, Tamworth, by courtesy of the Department of Public Works. Faithfully restored by the Department of Public Works, the Convent serves as offices for the Department as well as a location for the Regional Music Centre and the Tamworth Arts and Crafts Society. (NB Those travelling by bus will see the Convent Friday night.)

10.30-11 am Morning tea will be available free of charge at Tamworth Services Club.

11 am **Annual General Meeting** — Tamworth Services Club, 199 Marius Street, Tamworth.

12 noon-1 pm Inspection of *Longyard Hotel* complex, just south of city boundary on New England Highway. This complex (completed 1985) is a faithful revival of colonial Australian architecture.

Lunch: For those travelling by car, lunch will



The Old Dominican Convent, Tamworth, (1880-1882) open for inspection during the AGM weekend. Photo: Alan Townsend, Dept. of Public Works.

be a barbecue with salad, wine, coffee and slice. Cost \$10 per person. Those on the coach tour will be provided with a boxed lunch. Please apply for tickets on the Ticket Application Page at the back of this Magazine. Inquiries: Betty Farlow (02) 27 5374 and Glenys Bundy (067) 66 2103.

Accommodation: Block bookings have been made at the following motels for Trust members and units will be held until the end of August so book early. *Imperative:* state you are with the National Trust when booking. Abraham Lincoln, 343 Armidale Road, (067) 66 1233; Almond Inn (Homestead), 389 Armidale Road, (067) 66 1088; City Sider Motor Inn, 237 Marius Street, (067) 66 4777; Colonial Motor Inn (Flag), 519 Armidale Road, (067) 66 1866; and Stagecoach, 401 Armidale Road, (067) 66 6311

AGM TAMWORTH WEEKEND COACH TOUR

Friday to Sunday, October 16-18

An all inclusive coach tour has been arranged for members only for the AGM weekend. Local guides will accompany the coach party. The coach will leave on Friday, October 16 from The Scots Church, York St, Sydney, at 8.30 am, St Leonards Station Goodyard, 8.45 am and from Hornsby, bus stop opposite Florence Street at 9.15 am returning to Sydney on Sunday, October 18 at approximately 9 pm. Tickets are \$230 for twin/share accommodation and \$268 for single rooms (which are very limited) and may be applied for on the application page at the back of this Magazine. Tickets cover coach transport, accommodation at the Rodeway Motor Inn, Tamworth for 2 nights with breakfast, lunch on Friday, Saturday and Sunday, dinner on Friday and Saturday nights and house inspections.

EUROPEAN RAIL — TOURIST VIDEOS

HAVE YOU TOURED EUROPE? OR PLANNING TO DO SO? OR WISH THAT YOU COULD? THEN HERE IS A SERIES OF 7 VIDEOTAPES JUST FOR YOU.

A RAILFAN'S TOUR OF EUROPE

was filmed in 1980 & 1982 on a super 8 camera with a top quality lens. The video transfer and edit has been done on the latest Sony series 5 machines and the tapes capture all the excitement of the tour, with fairytale castles, gorgeous old buildings, fantastic scenery, midsummer snow, miniature city, mediaeval city, wonderful mountain railways, steam electric and diesel trains, and a very successful town where the motor car is completely banned.

Each tape is just under 1 hour long and the recommended price is \$49.95. The tapes are being released at a rate of one each 2-3 months. Those available now are: Part 1 Northern Europe, Part 3 Austria, Part 5 Beautiful Switzerland and Part 6 Spectacular Switzerland.

Available from The National Trust Bookshop, Observatory Hill.

For additional details, write to the producers,

ROWLINGSTOCK PRODUCTIONS 42 Pemberton Street, PARRAMATTA NSW 2150



PLANNING A FUTURE FOR HERITAGE

Stephen Harris derives much satisfaction from the observation that most town planners these days are heritage conscious.

He has always thought planning to be one of the major tools of conservation. This is one of the strong threads in his town planning course he undertakes as a Senior Lecturer at the University of NSW, and was one of his major concerns in his former position as NSW President of the Royal Australain Planning Institute.

Stephen retires as Chairman of the Trust's Urban Conservation Committee (UCC) this month, after eight years in the position. And throughout his Chairmanship of the committee, and other involvement in Trust and heritage conservation work, he has maintained a down-to-earth approach to the business of town planning.

Born and bred in the Sydney suburb of Burwood, Stephen attended Fort Street High School. (His paternal grandmother was a pupil at the same high school when it was at Observatory Hill in what is now the Trust Centre.) He studied town planning at the University of New South Wales under a cadetship with the State Planning Authority.

After completing his degree and work for the planning authority, Stephen accepted a position with the architectural and planning firm Jackson Teece Chesterman

Willis and Partners. It was from there he took up his current lectureship at the University of New South Wales, with occasional breaks for such things as sabbatical study at Oxford.

In earlier days, when he had a general interest in the forerunner of conservation — preservation — and when he was living in Glebe, Stephen rallied with others to stop the construction of freeways through Glebe. He remembers standing with others in front of DMR bulldozers which were demolishing Ultimo houses to make way for the planned western and north-western freeways. Although the buildings were destroyed, Stephen and his fellow protestors stopped the freeways.

Long gone are the days of sit-ins and green bans. Stephen believes that to win a battle now it is more productive to avoid confrontation. He has followed through the belief that the Trust should maintain a good image to improve working relationships with planning bodies and the public.

"In the UCC we strongly believe and always try to show that we're not trying to stop change, we're trying to ensure that the change that does occur, occurs sympathetically."

During his 16 years as a member of the Trust, and as a member of the Architectural Advisory Committee as well as the UCC, Stephen has seen a lot of change, including a better acceptance of both the Trust's work and the concept urban conservation in general.

In these times of greater public sympathy towards heritage issues, Stephen's work, and indeed the work of the Urban Conservation Committee (UCC), has finally received the recognition of which it has been deprived for so long. Things have

not always been so easy.

"When I started as Committee Chairman," says Stephen, "and even as a member of the Urban Conservation Committee before that, we were fighting an uphill battle most of the time. Nowadays, as often as not, councils and residents are coming to us for support in an argument that they've already formulated. They want justification and support for what they knew they wanted to say all along."

A majority of councils are now nominally sympathetic to urban conservation. But this turn around has only happened in the last five years. Whether it is a leaning towards heritage by councillors or pressure brought to bear by a concerned electorate, councils are now consulting the Trust on urban conservation matters.

These matters include planning proposals and re-zoning of land. More and more the UCC is being consulted on building applications and proposals for planning controls, although there are still times when the committee strongly opposes local council views on building applications and State Government proposed planning controls.

Apart from monitoring planning proposals, the UCC has maintained and increased its survey of significant areas in NSW, recommending those of significance for listing in the Trust's Register.

Stephen acknowledges that the task of surveying and listing an urban conservation area can be a difficult one. In carrying out the survey, accepted criteria of heritage significance are used — historical significance; association with particular people, events, eras or ways of life; examples of fine design or craftsmanship; and rarity value. Linking all this together

HADDONSTONE®

We invite you to inspect our architectural stonework:

Classical Columns,
Porticos, Gate Piers

Paving, Edging, Coping,
Pool Surround

Urns, Planters, Fountains,
Pergolas

Benches, Table Supports,
Fireplaces

HADDONSTONE®

PO Box 323

Moss Vale NSW 2577

Phone: (048) 68 3349

Fax: (048) 68 3376



and overlapping them, is the area's general townscape or streetscape quality.

In urban conservation there is always the concern for appearance. If an area looks good and is pleasant to live in, then, Stephen believes, it is the National Trust's task to help conserve its character as part of our heritage.

Despite a subjective feel, the aesthetics of an area are assessed objectively. In an urban survey, each building is assessed and mapped according to whether it contributes to the general scale and streetscape of the area, whether it is neutral, or whether it detracts from the area. When an area is completely surveyed, this townscape map indicates clearly which buildings, or groups of buildings, have the most significance.

Some areas are classified primarily for their historical value. An example of this, Stephen says, is the Sydney suburb of Castlecrag. Designed by Walter Burley Griffin, it is the first time landscape and landform were paid particular attention to in Australian urban development.

Other areas may be significant because they are rare or even unique. As a single, unified Federation suburb, the Sydney suburb of Haberfield is a rarity in Australia and indeed the world. Its rarity value is a strong reason for listing as an urban conservation area.

Stephen's and indeed the UCC's enthusiasm needs to be constantly checked by the practicalities of urban conservation area listing. There is always a need to be sure that the areas being listed are the right ones.

"You often go into an area and say instantly 'yes, this is it', but then you have to do the work to prove to yourself that it is it and not other parts of the town as well.

"It is very hard to draw the line. It's particularly hard to draw boundaries to say that this is the edge of what's most important and beyond that things are less important . . . I mean, nothing is unimportant but often we've debated that what we really should do is declare the entire State (of NSW) an urban and landscape conservation area and be done with it. That would, however, be less useful than our present approach."

When asked if, as a town planner, his Summer Hill house is in an ideal environment, Stephen says it comes close. The idea of an ideal environment, though, is difficult to realise.

"You can't have an ideal environment, particularly close to the city. There is always a trade-off between access and environment. Where I live is not ideal, but it comes close. If the garden was a bit bigger



Stephen Harris.

it would be pretty well what I'd pick as ideal."

When an area is classified, the Trust then has the responsibility of observing and making sure that area's heritage is not damaged. In some cases, such as the urban conservation area of Central Tilba, all development proposals are referred to the Trust by the local Shire Council. This is one way of maintaining control over work carried out in a conservation area, but it creates a heavy work load for the Trust.

Reciprocal help between the Trust and town planners has also maintained control over development work. While the Trust can offer town planners a concentrated source of available information and lends support to the Royal Australian Planning

Institute, town planners can reciprocate by keeping the Trust informed early in the piece about proposed projects.

Stephen believes that, especially as youth are more aware of the importance of conservation, the future of the Trust's work needs the strong support of today's youth. The Trust could also offer youth the chance to socialise with people with similar interests.

With his fresh thoughts and avant garde approach to engendering interest in conservation work, Stephen Harris could well be seen as one of the voices of the youth involved with the Trust. His long term experience with the Trust certainly makes him a voice for all ages concerned with the proper execution of conservation work.

HELP THE TRUST — BECOME A GUARDIAN

Show you care for our heritage by becoming a volunteer guardian (guide) at either Old Government House (c.1799-1816) or Experiment Farm Cottage (c.1835). Not only will you be helping the Trust. You will also gain an expert introduction to the history and conservation of two of Australia's major historic houses.

New orientation courses will be held on the following dates:

Old Government House — Monday, July 20 and Tuesday, July 21, 10 am — 4 pm.

Experiment Farm Cottage — Monday, July 20 and Monday, August 3, 10 am — 4 pm.

All courses are led by expert speakers and include talks on the history, restoration and interpretation of the site, as well as the educational aspects of guiding and museum presentation.

To reserve a place, telephone the Education Officer, Christopher Levins, at the Trust Centre on (02) 27 5374 during office hours.

Now you can support the National Trust by enjoying an outstanding Chardonnay from Richmond Grove.

Elegant yet full-flavoured, Richmond Grove's National Trust Chardonnay is a fine example of the experienced winemakers' art. And, thanks to a special arrangement with Richmond Grove, each purchase of the wine will provide

HERE'S TO THE NATIONAL TRUST

a contribution to the Trust's working funds for heritage conservation.



With attractive labels featuring Old Government House, Parramatta, along with wine notes, this special edition Chardonnay would make a particularly welcome gift. And at just *\$89.00 a dozen, it also represents excellent value for money.

Place your order now. We look forward to your joining us in a special toast to the work of the National Trust, and our association with Richmond Grove.

* Plus freight and insurance

ORDER FORM

Please complete and mail to: The National Trust of Australia (NSW), Mail Order Department, GPO Box 518, Sydney, NSW 2001.

Name _____
Mr Mrs Miss Ms Initials Surname

Address _____

Postcode _____

Daytime telephone no. (____) _____

Are you a member of the National Trust? Yes No

Special delivery instructions or address if different from above (no P.O. Box numbers, please)

Please send me . . . dozen(s) of Richmond Grove's

National Trust Chardonnay @ \$89.00 per dozen \$ _____

Plus freight and insurance @ \$3.95 per dozen \$ _____

TOTAL REMITTANCE \$ _____

I enclose a cheque/money order for \$ _____

Or please debit my Visa Bankcard no.

Signature _____

Expiry Date ____/____

Allow up to 21 days' delivery from receipt of order





NATIONAL TRUST GALLERIES

DAVID HOCKNEY PHOTOGRAPHS

David Hockney Photographs, an Arts Council of Great Britain exhibition toured overseas by The British Council, is currently on display at the Trust's S.H. Ervin Gallery.

Officially opened on the evening of Thursday June 4, by the Minister for the Arts, Mr Frank Walker, these stunning photo-collages provide a radically new and exciting perspective on the art of photography. David Hockney, one of England's most important twentieth century artists, has created large beautifully constructed images which have been put together from sometimes dozens, sometimes hundreds of photographs taken during a short period of time from different camera angles.

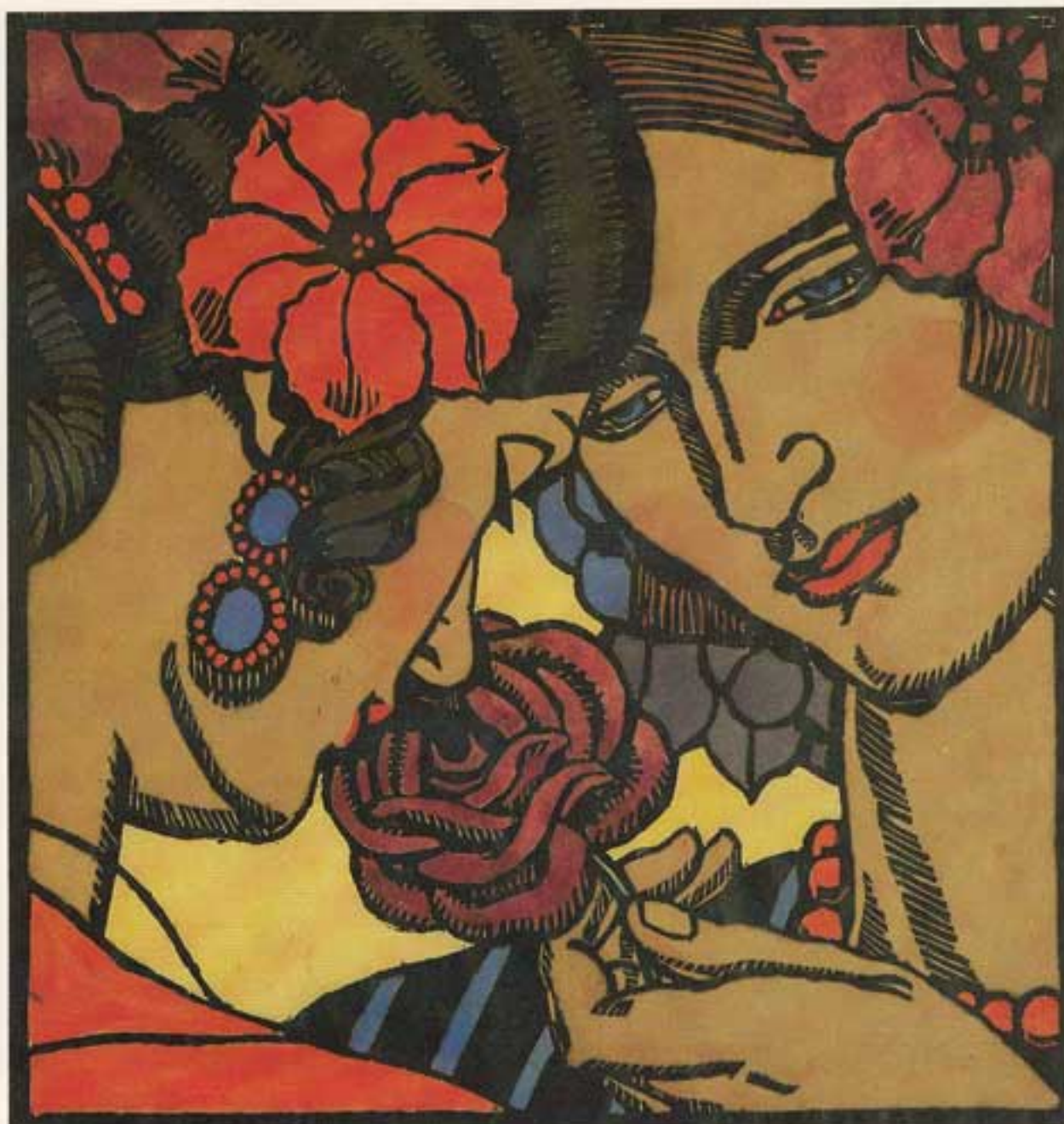
School groups are advised to book in advance by telephoning the Gallery on (02) 27 9222. Education leaflets are available and an excellent illustrated catalogue is on sale. This exhibition continues until Sunday, July 12.

THEA PROCTOR — TWO EXHIBITIONS

It will be followed by *two* simultaneous exhibitions devoted to the art of *Thea Proctor*.

Elegant, amusing and intelligent, Thea Proctor was regarded as "dangerously modern" on her return to Australia in 1921 after exhibiting her art successfully in London and in Europe throughout the first decades of this century.

Born in Armidale, New South Wales, in 1879 she was taught by Julian Ashton and her fellow students were Syd Long (to whom she was, for a short time, engaged to be married) and George Lambert who became her lifelong friend, she being both his pupil and, from time to time, his model. In 1903 she travelled to England to further her studies in art, at first at the St John's Wood School and later at the Slade School, and found inspiration in the theatre using it as a source for many of her drawings and watercolours, including her delightful fan designs on silk executed in the fin-de-siecle manner. In 1912 she



Thea Proctor's *The Rose*, 1927, a hand-coloured woodcut from the S.H. Ervin Gallery collection.

returned to Sydney for a short visit and exhibited with the New South Wales Society of Artists, her work being acquired by the Art Gallery of New South Wales and the National Gallery of Victoria.

Her career in Sydney throughout the twenties and thirties flourished and her striking relief prints were particularly highly regarded. Her views about art, and aesthetics generally, were forcefully expressed in lectures and interviews. With George Lambert she founded the Contemporary Group in 1926, a society founded to encourage younger modern artists. She designed a number of remarkably stylish magazine covers and wrote articles on interior decoration and fashion for *The Home* a magazine published by Sydney Ure Smith. In 1929 she devised the living room for the series of "modern rooms" exhibited at the famous Burdekin House exhibition, her choice of a framed work to decorate the walls being a reproduction by Van Gogh, in international terms hardly a "modern" artist by this time, however it introduced to Sydney a new and unusual art style. Her talents as a designer were further immortalised in her decorations and colour scheme for the Lacquer Room restaurant

in Farmer's Department store, an interior which was vividly portrayed by fellow artist Grace Cossington Smith in her well known painting *The Lacquer Room* of 1935.

Thea Proctor became influential as a teacher of design and in the 1940s was commissioned by J.C. Williamson's theatrical company as artistic adviser for several productions. Her watercolours of still-life interiors executed in the 1950s are charming representatives of her late work. An example recently entered the S.H. Ervin Gallery collection through the fund raising efforts of the Friends of the S.H. Ervin Gallery.

Her drawings, and again there is a fine example in the S.H. Ervin collection, have a sparseness of design and a simplicity of line which capture the essence of human form and create revealing portrait studies of friends, colleagues, and, in particular, of children.

Thirty-six drawings from the last of her studio sketchbooks will be offered for sale at the S.H. Ervin Gallery and at the same time an exhibition of her watercolours, drawings, woodcuts and lithographs selected from private collections will be mounted by the Gallery. These complementary exhibitions are being jointly organised by the S.H. Ervin



— FLIGHT —
THROUGH THE
SPECTACULAR
LAND • OF • THE
DREAMTIME

14 DAYS

FROM SYDNEY TO: Flinders Ranges (S.A.) — Coober Pedy — Uluru (Ayers Rock) and Olgas — Alice Springs — West and East Kimberley Regions (W.A.) — Broome — Ord River Scheme — Bathurst Island (Timor Sea) — Darwin — Katherine Gorge — Kakadu National Park — Arnhem Land Region — Gulf of Carpentaria — Carnarvon National Park (QLD) — Sydney.

We are looking for a small group for this unique flight into remote areas. Aircraft: comfortable, modern, turbo-charged Navajo Chieftains.

Departure dates for 1987:
May 2, June 13, July 25,
August 15, September 12.

INQUIRIES AS SOON AS PRACTICABLE

Please phone or write to:

FLIGHT THROUGH THE
SPECTACULAR LAND OF
THE DREAMTIME PTY. LTD.

Level 59 MLC Centre
Martin Place, Sydney 2000.
Phone: (02) 260 0207

24 hours a day — 7 days a week

Cont. from Page 19

Gallery and the Art Gallery of New South Wales. They will be on display for just over two weeks and will be opened by Mr Daniel Thomas, Director, Art Gallery of South Australia, at a grand cocktail party on the evening of Thursday, July 16. (See below for ticket application information.)

The opening reception will enable guests to have first opportunity to acquire a Thea Proctor drawing for their own collection. A special lecture has also been arranged for Thursday, July 23. Guest lecturer will be Ursula Prunster, well known art historian and Education Officer, Art Gallery of New South Wales, who will present fascinating material on the art and life of Thea Proctor. (See below for ticket information.) The Thea Proctor exhibitions will continue until Sunday, August 2.

(Article Source: J. Minchin in *Thea Proctor The Prints*, Resolution Press, Sydney, 1980.)

JUSTIN O'BRIEN AT THE GALLERY

To coincide with Justin O'Brien's seventieth birthday an exhibition entitled *Justin O'Brien and Friends: A Birthday Celebration* will open at the S.H. Ervin Gallery on Friday, August 7. It will include more than thirty paintings and drawings by Justin O'Brien selected from private collections to span four decades of his artistic career, and to celebrate his birthday he has invited six artist friends whose work he wants exhibited alongside his own. They are Donald Friend, Margaret Olley, Jeffrey Smart, Martin Sharp, Brian Dunlop and Egidio Scardamaglia.

Justin O'Brien was born in Sydney in 1917. He served in Palestine and Greece during the Second World War and one of the paintings in the exhibition dates from the time he was a prisoner-of-war in Poland. During the 1940s he lived at *Merioola* in Woollahra and regular visitors to the S.H. Ervin Gallery will remember the interesting examples of his work which were included in the *Merioola* exhibition mounted last year. His friendship with Donald Friend dates from his *Merioola* days.

O'Brien taught for many years at Cranbrook School, Rose Bay, one of his most famous pupils being Martin Sharp who has always acknowledged his debt to O'Brien's inspired teaching. Since 1967 he has lived in Europe, firstly Greece, and, in later years, in Rome, however he has continued to exhibit regularly in

Sydney and his work has been enthusiastically collected by Sydney art patrons many of whom have generously agreed to lend for this exhibition.

To coincide with his birthday a book *Justin O'Brien: Image and Icon* by art historian Christine France will be published by Craftsman Press and will be on sale at the S.H. Ervin Gallery during the exhibition. The Exhibition will conclude on August 30 and will be followed by the very special Elder's IXL Art Collection, *A Portrait of Australia* which includes masterpieces of Australian art focusing on the land and its people. Nineteenth century artists such as John Glover, Eugene Von Guerard and Arthur Streeton are represented and the exhibition extends to include masters of the mid-twentieth century such as Russell Drysdale and William Dobell.

THEA PROCTOR — AN ART EVENT

Thursday, July 16

A special reception will take place in the elegant surroundings of the S.H. Ervin Gallery to launch an exhibition of Thea Proctor paintings and drawings from private collections combined with a sale of the last drawings from her studio sketchbooks. Guests will have first opportunity to purchase a Thea Proctor drawing for their own collections. The exhibitions will be officially opened by Mr Daniel Thomas, Director, Art Gallery of South Australia. Champagne and hors d'oeuvres will be served. The Champagne has been donated by the Moët & Chandon Australian Art Foundation.

Time: 6 to 8 pm.

Cost: \$18 per person. Please apply for tickets on the Ticket Application Page at the back of this Magazine.

THEA PROCTOR LECTURE

Thursday, July 23

Well known art historian and Education Officer, Art Gallery of New South Wales, Ursula Prunster, will lecture on Thea Proctor (1879-1966) — her art, life and times, at the S.H. Ervin Gallery on Thursday, July 23, 1987. This lecture will coincide with the Thea Proctor drawing sale and exhibition (see Page 19 for details).

Time: 5.30 pm for 6 pm.

Cost: \$6 per person includes wine and cheese. Please apply for tickets on the Ticket Application Page at the back of this Magazine.



NATIONAL TRUST

STAY WITH
THE TRUST
IN SYDNEY

See Advertisement
Page 22



BOOKS

CROCODILE TALES

by Dr Graeme Wells.

Photographs by Bill Green and Dr Wells.

Crocodile Productions, Wahroonga, 1986.

Hardcover. Illustrated. RRP \$9.95.

THE CAT

by A.B. Paterson.

Illustrated by Lorraine Hannay.

Landsdowne Press, Dee Why West, 1986.

Hardcover. Illustrated. RRP \$12.95.

Saltwater crocodiles and the domestic cat may have little in common with each other, but the authors of these books chose to write about them for much the same reason. Both set out to correct false impressions of these animals and to give a more accurate representation of their natures.

Crocodile Tales contains four interconnecting stories about the saltwater crocodile (*Crocodylus porosus*), a species which has been brought close to extinction by widespread hunting. Dr Graeme Wells' purpose is to show that these creatures are not hideous manhunters and to give us an understanding of the complex, diverse environment in which they survive.

Each of the interconnecting stories is prefaced by a scientific synopsis (sic) of a few paragraphs in length. These synopses provide the adult reader with information to answer the questions of the young. The stories feature two crocodiles called Baru and Ginga who meet, form a rela-



Interesting photographs such as this, of a baby crocodile, trace the life of crocodiles in Dr Graeme Wells' *Crocodile Tales*.

tionship and raise a family. The humanising of the crocodiles is successful to a point but is let down in some instances by stilted and unimaginative writing. Still, the stories carry interesting information and the photographs which accompany the text excel in their detail and mood, giving colour and depth to the narrative. Older readers should appreciate this book.

The Cat is a short tale by "Banjo" Paterson which has been published in hardcover, with skillful illustrations by Lorraine Hannay and an attractive, hand-lettered text by Margrit Eisermann. It sets out to give us an insight into the lives of cats, to show us that behind what is often perceived as an aloof visage and a casual,

daily routine, lies a very different picture. Cats, Paterson explains, are shrewd animals which act out two lives. One life, of calculated fidelity, comprises tricks and routines performed before human "masters" with the purpose of disguising a hidden and more meaningful life filled with adventure, drama, vigour and passion. This book is a concise piece of writing. It has a witty style and a detached tone that serves to reveal as much about the human masters as it does about the cats. The illustrations are a pleasant accompaniment, although they lack the sharpness of Paterson's pen. *The Cat* will earn the appreciation of older children and adults alike.

Christopher Levins



Abbott's Antiques

The established name for quality antiques since 1931

We buy and sell fine quality Georgian and Victorian furniture, porcelain, glass, jewellery. Sterling silver specialist.

787 Pacific Highway, Gordon
(02) 498 6561

Fine Art Nouveau Bronze titled "Salome", signed Louis Convers Roma 1811



TOWN HOUSE for TRUST MEMBERS

The National Trust has two town house apartments available for short term letting by Trust members in this terrace on the Agar Steps, near the Trust Centre at Observatory Hill in central Sydney. Fully serviced. Ideal for business visits or holidays.
Phone National Trust Real Estate Service, (02) 27 5374.

Est 1929
— THE —
**BLAXLAND
GALLERY**

Forthcoming Exhibitions

4th June - 20th June

* **Sydney Printmakers -**

An exhibition of contemporary limited edition prints, serigraphs, etchings, linocuts, woodblocks (Both galleries)

25th June - 11th July

* **ACTA Maritime Art Award -**

Third annual exhibition of this national art prize for maritime painting, sponsored by ACTA Shipping (Both galleries)

16th July - 8th August

* **Greek Treasures -**

Replicas of sculpture, pottery, jewellery and icons held in the National Museum of Greece, Athens (Both galleries)

6th Floor Grace Bros. Cnr. Pitt & Market Streets, Sydney 2000.
Telephone (02) 238 9390

Gallery Hours: Monday to Friday 10 am to 5 pm.
Thursday 10 am to 7 pm. Saturday 10 am to 3 pm.



Antique Dealers Association of N.S.W.

Lecture Series 1987

Here are the dates, times, lectures and their topics.

19th August

Welcoming cocktails and English and French furniture - Mr Ian Fraser and Mr Charles Aronson.

26th August

Silver - Mr Jolyon Warwick James and Mr John Houstone.

2nd September

Australian Colonial Architecture and Furniture - Mr Howard Tanner and Mr Kevin Fahy.

9th September

Australian Books and Prints - Mr Joseph Lebovic and Mr Tim McCormick.

16th September

Jewellery and Clocks - Mrs Anne Schofield and Mr George Hamburger.

23rd September

Ceramics - Dr John Yu.

Oriental Rugs - Dr George Soutter and Mr Ross Langlands.

Each evening's program commences at 7.30 pm.

ANTIQUE DEALERS ASSOCIATION OF NEW SOUTH WALES LECTURE SERIES 1987

I wish to enrol for the lecture series at History House, 133 Macquarie Street, beginning on the 19th August and enclose my cheque for \$95 to P.O. Box 308, Paddington, 2021, N.S.W.

NAME: _____
ADDRESS: _____
PHONE: _____

DAMP IS DANGEROUS

CURE WET WALLS PERMANENTLY WITH STAYDRY TECHNOLOGY & SKILLS



If your Problem is:

- RISING DAMP
- SUB FLOOR VENTILATION
- PENETRATING DAMP
- DRAINAGE PROBLEMS

**CONSULT OUR EXPERTS IN
DAMPNESS CONTROL. STAYDRY
EXCLUSIVELY KILLS SALT ACTION**



ask about our conditional maximum
50 YEARS GUARANTEE
ON OUR CONTINUOUS DAMP COURSE

- OBLIGATION-FREE
OWNER INSPECTIONS

Staydry PTY.
LTD.

516 5277

33 MARRICKVILLE ROAD, MARRICKVILLE

BUILDERS LIC. No 30485



The National Trust's Bicentennial Programme



RESTORATION OF VIENNA LAUNCHED

The restoration of Vienna, the historic tradesman's cottage at Hunters Hill, was officially launched on May 3 by the Minister for Planning and Environment, Mr Bob Carr.

Until it was acquired by the Trust in 1984, the cottage was privately owned. Excluding some recent roof repairs, it was in its original state and in need of urgent restoration work.

Mr Carr presented a NSW Bicentenary Certificate of Endorsement to the Chairman of the Vienna Appeal Committee, Mr Philip Jenkyn.

The President of the Trust, Associate Professor Max Kelly, the Minister for Education, Mr Rod Cavalier, and the shadow Attorney General, Mr John Dowd, were also at the launch.

Vienna is one of 13 properties in the National Trust's Bicentenary *Gift To The Nation* which is sponsored by Amatil Limited.

The Director, Public Affairs, of Amatil Limited, Mr Phil Scanlan, invited others to get behind the Vienna Appeal Committee to help raise the additional \$85,000 needed to complete the project.

LABASSA BOASTS RARE CEILING

Bicentennial restoration work at the Victorian Trust property Labassa has revealed a style of ceiling rarely seen in Australia.

The ceiling, in the smoking room of the house, is covered by a trompe l'oeil painting (a painting that successfully depicts a three dimensional image). The painting has remained intact, although the ceiling part of the cornice was damaged at some stage.

Most of the finishes in the great reception areas of Labassa have escaped damage. Fearing some well meaning owner might cause irrevocable damage by a coat of paint, the National Trust in Victoria bought Labassa in 1980. With the support of Amatil Limited, Labassa is being restored for the Bicentenary.



The Premier of NSW, Mr Barrie Unsworth, and Mr John McPhail, Managing Director, Caltex Oil (Australia) Pty Limited with one of the commemorative plaques placed in Macquarie Street during Heritage Week '87.

Besides the smoking room, Labassa's stairwell and first floor hall have also suffered the installation of plasterboard ceilings.

PLAQUES FOR HISTORIC SITES

Sydney's historic Macquarie Street is to receive 20 commemorative plaques to mark buildings and objects that no longer exist.

The plaques, 800 millimetres in diameter and cast in bronze, show an engraving together with a brief description of each site. They will be placed in the footpath along the eastern side of Macquarie Street, between Queen's Square and the Opera House.

Two plaques were installed during Heritage Week '87. These mark the sites of the Rum Hospital and the Proposed Parliamentary Buildings (both outside Sydney Hospital).

Macquarie Street, the home of such buildings as the Commonwealth's "Mother Parliament", is one of the most historically important thoroughfares in Australia. The remaining plaques will be laid during the re-pathing of the street.

Trust President, Professor Max Kelly, is researching and writing the text for the plaques, which are being sponsored by Caltex Australia Limited in conjunction with the Government of NSW as a Bicentennial gift.

Other sites selected for the plaques include the Female School of Industry (near the Old Mitchell Library), Burdekin House (near present day St Stephens Church) and the Rights of Passage (near the Moore Steps).

1988 EXHIBITIONS

A number of exciting exhibitions and displays are being planned for 1988. Any help you can offer with information, objects and pictures relating to these subjects would be appreciated:

Juniper Hall, Robert Cooper and the rest of the inhabitants of the building.

Tathra Wharf, on the south coast and the theme of coastal shipping.

Cooma Cottage, Hamilton Hume and the theme of inland exploration of the south east of Australia.

Replies should be addressed to the Curator, National Trust of Australia (N.S.W.), GPO Box 518, Sydney, NSW, 2001, or telephone (02) 27 5374.

Berrima Lavender Farm



LAVENDER
GREY FOLIAGED PLANTS
PERENNIALS AND
RARE PLANTS

MARKET PLACE,
BERRIMA

Phone: (048) 77 1329

OPEN SEVEN DAYS

ACTIVITIES

FRIENDS OF THE S.H. ERVIN GALLERY

VISIT THE STUDIO OF SALVATORE ZOFREA

Sunday, August 9, 11 am.

See how one of Australia's most famous artists, Salvatore Zofrea works in his Kurrajong studio. A wonderful opportunity to view Salvatore's Tuscany watercolours, and etchings, completed in Italy last year when he was studying frescoes under the Master, Leonetto Tintori in Florence, as part of the 1986 Churchill scholarship.

It's a beautiful drive by your own car to the Zofrea Kurrajong studio. Cost is \$16 for non-members, \$15 for members and includes lunch. (Transport available if required.) Please apply for tickets on the application page at the back of this Magazine. Inquiries, telephone Averil Kearney (02) 772 4140 (after 5.30 pm) or Philip Rasmussen on (02) 449 5668.

CONSERVATION ON THE MOVE

August 3 to 28. Observatory Hill.

This is a mobile conservation laboratory fully equipped and staffed by two expert conservators.

The Friends of the S.H. Ervin Gallery have under-written costs to bring this mobile conservation laboratory to Observatory Hill from August 3 to 28. The laboratory is equipped with all the latest technology to *Save It For Later*.

FREE ADVICE ON CONSERVATION

Thursday, August 13, 20, 27,
10 am to 1 pm.

You are invited every Thursday from 10 am to 1 pm to bring in your paintings, drawings, photographs, prints, books and documents for inspection and advice on conservation free of charge. This is a community service in the interests of art conservation, the Friends have under-written costs of this service.

Please book beforehand at the S.H. Ervin Gallery on (02) 27 9222.

LONDON APARTMENT SLOANE GARDENS

Charming 2 bedroom apartment for limited rental. Traditionally furnished for owners comfort, centrally heated with elevator, entryphone, caretaker and use of private garden at rear. Located in very quiet, tree lined street yet only 3 minutes walk to Sloane Square Station, and Kings Road, Chelsea.

3 Weeks minimum rental.
1988 — \$650 per week.
Phone owner (02) 428 3033
or write Box 275,
Lane Cove 2066 NSW.

MOBILE CONSERVATION LABORATORY CONSERVATORS LECTURE

Wednesday, August 19

Well-known conservator David Stein will give a lecture and advice on paintings. Tony Ameneiro will advise you how to save works of art on paper for later — watercolours, prints, photographs and drawings. This is an extraordinary opportunity to hear how the experts approach conservation work, and how modern technology can help save treasures of the past. The lecture includes an audio-visual and will start at 5.30 pm for 6 pm. Tickets are \$10 for non-members and for members \$8 and include light refreshments. Please apply for tickets on the application page at the back of this Magazine. Inquiries, telephone Averil Kearney on (02) 772 4140 or Elizabeth Lazar on (02) 438 4793 after 5.30 pm.

THE ITALIAN CONNECTION

THE BRILLIANCE OF THE MACCHIAIOLI

Wednesday, August 26

Famous art historian and expert, Lou Klepac, will trace the Italian Connection with the French Impressionists and post Impressionists and famous Australian painters such as Nerli and Dattilo — Rubbo. The Italian Connection is known as the Macchiaioli, and seeing is believing their brilliance, little known to most Australians. The Justin O'Brien exhibition in the S.H. Ervin Gallery at the same time as the lecture, is also part of the present day Italian Connection. The evening will start at 5.30 pm for 6 pm at the S.H. Ervin Gallery. Tickets are \$10 and include light refreshments. Please apply for tickets on the application page at the back of this Magazine. Inquiries, telephone Averil Kearney on (02) 772 4140 or Elizabeth Lazar on (02) 438 4793 after 5.30 pm.

SPRING PICTURE ON THE SOUTHERN ROAD

Saturday, September 19

Spring in the Southern Highlands is a picture and to celebrate the spring you can inspect sculptures, paintings, architecture and flowers.

Inspect *Harper's Mansion*, the Court House and Berrima Museum, with morning tea. Next stop is *Oldbury Farm*, c.1822 courtesy of Mr and Mrs David Sherbon, and other historic architecture at Sutton Forest. *BYO Picnic lunch at Burradoo*. Inspection of *Maidart Garden*, Bowral. Afternoon tea at Mt Broughton and other lovely scenic sights of the Southern Road will be seen on our way home.

Coach leaves St Leonards Station Goodyard at 7.15 am; Eddy Avenue, Central Station (Belmore Park side), at 7.45 am; Strathfield Station, Parramatta Road (southern side) at 8 am and Liverpool, Westfield Shopping Centre at 8.45 am. Cost is \$28 per person and includes morning and afternoon teas and admissions. Please apply for tickets on the application page at the back of this Magazine. Inquiries, telephone Averil Kearney on (02) 772 4140 or Elizabeth Lazar on (02) 438 4793 after 5.30 pm.

ART IN SPRING IN NEW ENGLAND

Friday afternoon to Monday, Oct 2-5

This coach tour features art, architecture, history and a heritage walk in Armidale. Coach leaves Sydney at 3.30 pm on Friday and returns early Monday evening.

Saturday

View the famous Howard Hinton Collection — paintings by everybody who was anybody in the Sydney art world from 1880 to 1920. Landscapes, seascapes and portraits by Arthur Streeton, Tom Roberts, Lloyd Rees, Adrian Feint, Margaret Preston and many others, now in a beautiful modern gallery. The Director will conduct a special visit to see treasured artworks not usually on display to the public.

The Coventry Collection 1960 to 1980, and a retrospective of Charlie Tjaruru Tjungurrayi, will be on show. We will also visit the New England Folk Museum with historic displays ranging from china to coaches.

Saturday night: at the movies.

Sunday

Visit *Boooloombah*, 100 years old in 1988, with an outstanding collection of Dobells, Drysdals, Lindsays, Ashtons and Hans Heysens, with the famous General Gordon stained glass windows.

See the Classics Museum with Cypriot, Egyptian and Aboriginal artefacts. Go for a Heritage Walk through the tree-lined streets in spring blossom, to visit both cathedrals, and buildings of historical and architectural interest.

Monday

Visit the National Trust's *Saumarez* for early buffet lunch before returning home.

Cost: \$250 includes travel, all meals, admissions and accommodation in centrally-heated modern on campus rooms at the University of New England. Early bookings are essential. Please apply for tickets on the Ticket Application Page at the back of this Magazine. Inquiries telephone Averil Kearney on (02) 772 4140 or Elizabeth Lazar on (02) 438 4793 after 5.30 pm.

PHILLIPS COLLECTION AT AUSTRALIAN NATIONAL GALLERY

Saturday, Oct 3, 10, Wednesday, Oct 21

A one day coach tour has been organised to attend the opening day and two other days of display of the Phillips Collection at the Australian National Gallery in Canberra.

The collection includes works by French Impressionists Renoir (such as his *Luncheon of the Boating Party*), Van Gogh and Bonnard (including his *Woman with Dog*), as well as El Greco and Goya. Cost is \$50 per person and includes travel and Gallery admission. Coach departure points will be St Leonards Station Goodyard; Eddy Avenue, Central Station, (Belmore Park side); Strathfield Station, Parramatta Road (southern side). Details and ticket applications will appear in the September issue of the Magazine.

NB The closing date for ticket applications is seven (7) days before the event.



TOURS CO-ORDINATING COMMITTEE

The closing date for ticket applications is seven (7) days before the event.

POTTS POINT TALK AND WALK TOUR

Wednesday, September 16, 11 am to 3.30 pm

A talk (with slides) and a walk featuring old buildings around Potts Point and several naval establishments has been arranged by the Tours Co-ordinating Committee. By kind permission of the Rear Admiral commanding the Fleet, the ballroom at *Bomerah* will be the venue for a talk on the area by Mr Jack Gibbs. Mr Gibbs has researched the neighbourhood extensively. A sandwich lunch will be provided at Kuttabul Naval Barracks, before commencing the walk, conducted by Mr Gibbs, which is about 1 mile (1.6 km) and will take approximately 1¼ hours.

There are no facilities for parking in the area. Bus no. 311 leaves Circular Quay at 10.20 am and travels by way of Macquarie Street and Queen's Square at about 10.28 am. Please alight at Kuttabul Barracks and walk downhill to *Bomerah*. This day tour will be escorted by Mrs Jean Farncomb, telephone (02) 358 2641.

The cost including the sandwich lunch is \$12.50 for members and for non-members, \$14. Please apply for tickets on the Ticket Application Page at the back of this Magazine.

POSTMAN'S RUN ON THE HAWKESBURY RIVER

Wednesday, October 14

The Tours Co-ordinating Committee is aware many members were disappointed when the previous run of this tour filled so rapidly. We are now inviting you, to join us when the weather will be warmer on a repeat of this wonderful riverboat excursion on the magnificent Hawkesbury River.

The day will start early with an 8 am coach pick up at St Leonards Station Goodsydard. The coach will then drive to Brooklyn to join the Riverboat which sails at 9.30 am and which will arrive at Patonga Beach on Broken Bay at 2 pm. Morning tea and lunch will be served on board.

Our coach will meet us at Patonga Beach for the return drive to Sydney, including a stop at Parry's Florals Native Flower Nursery at Kariong. We should be back at St Leonards Station Goodsydard by 4.30 pm.

This day tour will be escorted by Mrs Margaret Edwards, telephone (02) 958 1316. Cost is \$35 for members and for non-members, \$36 (includes morning tea and lunch). Please apply for tickets on the application page at the back of this Magazine.

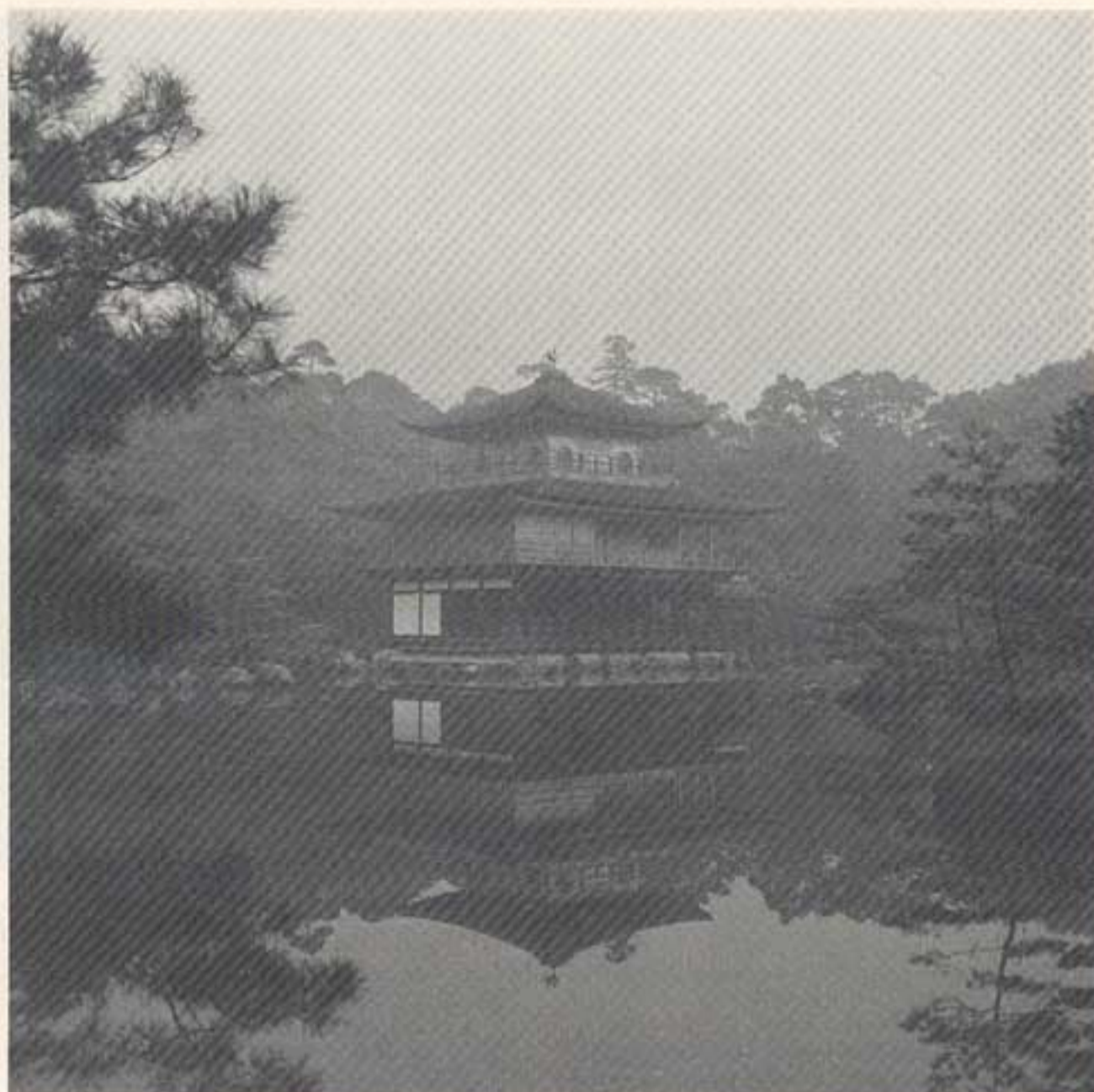
THE NATIONAL TRUST WAY TO QUEENSLAND

REVISED

August 9 to September 4

Some vacancies are still available on this tour. Even though you have been to Queensland, this holiday will be a different experience.

Now that southern days are short and cold, escape with us to Queensland's warm weather and



Kingkaku-Ji, Kyoto, Japan. Some of Kyoto's architectural wonders will be viewed during The National Trust Way to Japan.

hospitality. Have you been to Cooktown? Or Lizard Island? Have you travelled on the comfortable, air-conditioned Daylight Rail Tour? This train journey includes some intriguingly varied parts of the Queensland environment, such as a cruise through Hinchinbrook Passage.

On this tour you will have the privilege of visiting several important private properties not normally open to tourists. And one of the bonuses of a National Trust Way tour is the warmth of friendship in congenial company even if you travel alone, and the security of capable tour leaders.

Cost of the tour is \$3,875 (twin share accommodation) with a single supplement of \$700. This cost includes first class accommodation, 14 lunches, 21 dinners, all travel arrangements and entrances. The tour will be led by Mrs Bette Kingsford-Smith, Trust Councillor and experienced guide, and Mrs Susan Brown, Tours Co-ordinating Committee member. As tour departure is now close, please apply promptly to Mrs A. Chandler, Penthouse Travel, 109 Pitt Street, Sydney, telephone (02) 231 1155.

THE NATIONAL TRUST WAY TO JAPAN

September 30 to October 25

Shinto shrines, sushi, sake, silk screens, kimono, Buddhist temples, ginkoes and wood block prints - all part of the fascination of Japan which exploded upon the Western World late last century and influenced such people as the French Impressionists, Frank Lloyd Wright, Walter Burley Griffin and Giacomo Puccini to produce their masterpieces.

Join this 26 day autumn tour through three of Japan's four main islands. Besides viewing Japan's

unusual and renowned landscape, you will see such sights as the simple Zen rock and sand gardens, two famous National Parks, and view some of the best examples of Chinese T'ang architecture and artefacts in the world in 8th Century Nara. There will also be an opportunity to see the 17th Century Nijo Castle, famed for its "singing floors", and Ginkaku Temple (the Silver Pavilion), both architectural wonders of Old Kyoto. Himeji Castle, the White Heron near Okayama long considered the masterpiece amongst Japanese fortresses because of its graceful proportions, will also be visited.

The ancient craft of lacquerware will be explained to you by a master craftsman in Wajima, on the picturesque Noto Peninsula. Takayama, in the mountainous Hida district, is also on our tour agenda. Here we will witness the Yakata Matsuri, the autumn festival noted for its lavishly embellished floats and colourful costumes and one of three festivals to be witnessed.

Through our contacts with such organisations as The Japanese National Trust, The Sogetsu School of Ikebana and The Sydney Sister City Committee (Nagoya), we will make many private visits. We will stay five nights in Tokyo, six in Kyoto, three in Nagasaki and two each in Kanazawa, Takayama and Nagoya. One night will be spent in a Japanese ryokan and our final night at a hot spring resort in Hakone overlooked by Mt Fuji.

Three full days and five half days have been left free for you to pursue your own interests or just relax. Breakfasts and most dinners have been included although to help keep costs to a minimum, some dinners have been excluded in the major cities.

The tour will be escorted by Trust Councillor Mrs Diana Hazard and Ms Virginia Hazard, Japanese speaking guide. For itineraries and further



information, please telephone Mrs Diana Hazard on (02) 958 5836 or Meg Cooney or Robert Jackson at World Travel Headquarters, 33 Bligh Street, Sydney, on (02) 237 0300.



**THE NATIONAL TRUST
WAY OF DISCOVERY
COOK'S SOUTH PACIFIC —
NOVEMBER, 1988**

Not since the days of Alexander the Great had man's horizons been so widely expanded as when the great European explorers like Megellan, Mendana, Bougainville and Cook set sail on their magnificent voyages of discovery into the South Pacific.

How brave were these early navigators as they charted the unknown seas with their dangerous coral cays and uncivilised shores. European discovery brought immense changes to the tiny Polynesian islands of the South Pacific. British, Spanish, French and Portugese colonists brought with them new languages, religions, commerce, trade and diseases which could not be combated in the steamy tropics.

The South Pacific, "civilised" since the days of exploration, has also been romanticised by adventurers and writers like Robert Louis Stevenson, Somerset Maugham and the authors of *Mutiny on the Bounty*, Charles Nordhoff and James Norman Hall.

Captain James Cook's South Pacific discoveries during the 1770's and 1780's were legendary and, November 1988 will become a legendary date for Trust members for it is then that they are invited to celebrate Cook's great journey in a special cruise

that will visit remote Polynesian and Melanesian islands seldom seen by travellers today.

Commencing in the largest of the Society Islands, Tahiti, the South Pacific Discovery cruise offers three weeks of relaxed sailing through the Marquesas, the Cook Islands, the 'Friendly' Tonga Islands, the New Hebrides and vibrant Fiji. Highlights of the cruise include visits to historic ports of call where the highly-informed shipboard historians and anthropologists will recount the episodes of exploration and colonisation.

The South Pacific Discovery cruise concludes in Fiji however members are offered the possibility of continuing by air to New Zealand where a 5-day tour will embrace the north island. A further optional 12-day tour of eastern Australia will continue the theme of Cook's intrepid journey to these southern shores.

National Trust members from all Australian States are invited to join this cruise along with members of the New Zealand Historic Places Trust. Early booking is therefore highly recommended.

For further details on The National Trust Way of Discovery — Cook's South Pacific please contact Bette Kingsford-Smith on (02) 467 2115 or Suzanne Woolcott (02) 498 5752 (both of whom will accompany the cruise), or Ailsa Chandler of Penthouse Travel on (02) 231 1155 or toll free (008) 22 1369.

**OPEN DAY
AT WIRRIMBIRRA**

You are invited to an Open Day at the Wirrimbirra Sanctuary and Field Study Centre on Sunday, August 30, starting at 10 am.

Wirrimbirra Sanctuary is the National Trust's 98 ha property on Remembrance Drive (old Hume Highway) near Bargo. At the sanctuary is a wide variety of flora and fauna in their natural state, as well as a native plant nursery, picnic facilities and nature trails.

The Open Day is an annual event with activities for all age groups. Visitors can go on a guided nature walk and can learn about the educational facilities the sanctuary has to offer.

Come and see the natural wonders of Wirrimbirra Sanctuary. BYO picnic lunch. Entrance and other fees are not charged. Inquiries telephone (046) 84 1112.

**GARDEN
COMMITTEE**

The closing date for ticket applications is seven (7) days before the event.

WINTER GARDEN SEMINAR

Thursday, July 23

The Garden Committee is holding another of their popular Garden Seminars at *Lindesay*, Carthona Avenue, Darling Point.

This day will be very appealing to all gardeners. No matter if you are a life-time green thumb or just a beginner, there will be new and interesting things to learn. The programme will be:-

10 am Dr Peter Valder — *How Plants Work*

Dr Valder is a Senior Lecturer in the School of Biological Sciences at Sydney University. He was responsible for *A Curious and Diverse Flora*, a marvellous film about Australia's native plant heritage and all who have visited his family garden *Nooroo* at Mount Wilson will know of his expert knowledge, his inimitable wit and his appreciation of the green and growing world.

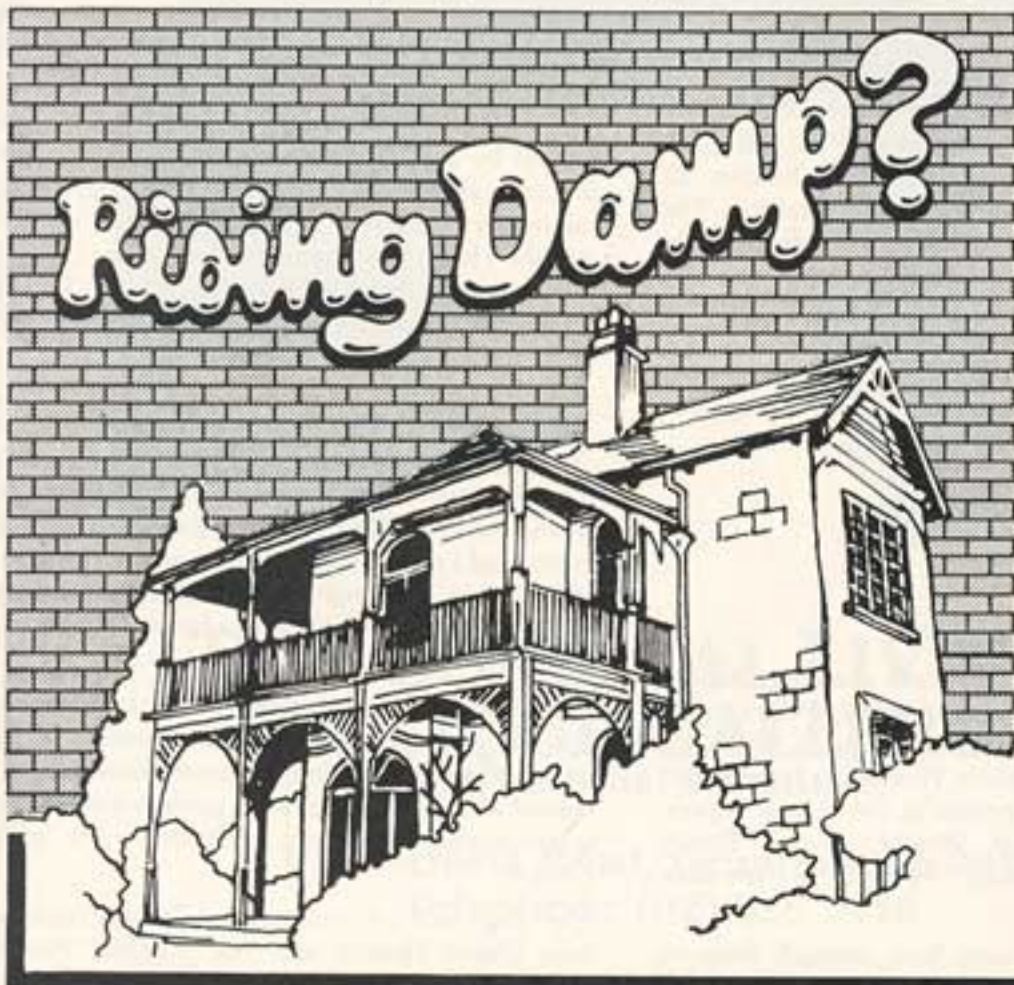
11 am Mrs Peggy Muntz — *Garden Treasures In France*

A member of the Garden Committee, Mrs Peggy Muntz will describe and show slides of the grand as well as the small, private and intimate gardens which the Garden Committee Tour has just visited. Enjoy a conducted tour through Paris, Normandy and the Loire Valley.

12.15 pm Lunch will be served.

1.30 pm Mrs Kitty Courtney — *Garden Fresh Cuisine*

Since arriving from America 24 years ago, Mrs Kitty Courtney has taken a lively interest in all things Australian. She successfully operated Avalon Garden Centre for 7 years, is the present President of Australian Association of Zoo Friends as well as being a professional caterer for the past 10 years. Her



**CALL
DRYSTAT**

Permanent cure without structural damage with Drystat's patented self-supporting membrane damp-proof course.

- Winner ABC "Inventors" programme, 1979.
- Gold medal winner architectural section 8th International Exhibition of Inventions and New Techniques, Geneva, 1979.
- In business since 1967...
- proven experience
- Member of THE NATIONAL TRUST FUND
- Accredited Government contractor
- Member Master Builders Association of N.S.W.
- N.S.W. Builders License No. 15857

**SYDNEY 519 5077
MELBOURNE 489 4322 ADELAIDE 352 3533**



preparation of food is mouth-watering and innovative and she will be showing us many new ideas.

3 pm Finish

Tickets, which include lunch, are \$30. Please apply on the Ticket Application Page at the back of this Magazine.

SPRING GARDEN DAY

Wednesday, September 23

The Garden Committee is very pleased to invite you to visit four magnificent gardens in Hunters Hill on this day.

Gardens and water views, all facing the warming northern sun and looking their best for spring. The gardens range from *Milthorpe*, built in 1872, with its expansive 3 acres of garden which sweep down to the water to small gardens as *6a View Street* which has its own beachfront.

The proximity of the water is an essential element in all these gardens and they have all been designed to make the most of their unique positions. The four gardens we will visit are:

29 *Woolwich Road*, Hunters Hill, by courtesy of Dr and Mrs J.D. Wilson

15 *Crescent Street*, Hunters Hill, by courtesy of Dr and Mrs Andrew Dowe

Milthorpe 12 *Crescent Street*, Hunters Hill, by courtesy of Mr and Mrs L.A. Walker

6a *View Street*, Woolwich, by courtesy of Mr and Mrs Nicholas Peters

Coffee will be served during the day at 29 *Woolwich Road* and you will find the Garden Committee Stall there too. Neil Park is located on *Woolwich Road* for your own picnic lunch.

Come and enjoy this spring outing. Tickets \$6. Please apply on the application page at the back of this Magazine.

CHRISTMAS AROUND THE WORLD

Gala Opening — Wednesday, Oct 21
Exhibition — Thurs to Sun, Oct 22-25

The Garden Committee is 21 years old this year and to celebrate we are planning this splendid event to be held at *Lindesay*, 1 *Carthona Avenue*, Darling Point. It will be a combined Christmas Party and Birthday Party.

Christmas Around the World will be an exhibition of decorating ideas illustrating customs from around the world arranged by Sydney's leading designers. On some of the stands items will be for sale. Among those exhibiting are Studio Haus, Martyn Cooke, Robert Morrison, Carolyn Lockhart (Vogue), Helen Marshall, Country Floors, Hampshire and Lowndes, John Normyle, Appley Hoare, Robin Duffecy, Wentworth Antiques, Michael Love and Parterre Gardens.

A Gala Opening Night Party will be held on Wednesday, October 21 when all the exhibitors will be present and Mr Leslie Walford will formally open the exhibition. This party will commence at 6.30 pm when good food and wine will be served to the accompaniment of a string quartet. Tickets for the Gala Opening, at \$25 per person, can be applied for on the application page at the back of this Magazine.

The exhibition will be open from Thursday till Sunday from 10 am to 5 pm and lunches will be served by Susie Burrows. Tickets cost \$5 for adults, \$3 for pensioners and students and can be applied for at the back of this Magazine or bought at the door.

GARDEN COMMITTEE'S CELEBRATION OF AUSTRALIA DAY, 1988

Tuesday, January 26

Sydney Harbour will be the place to be on January 26 next year.

In the morning, a re-enactment of The First Fleet, with an anticipated 11 ships, will sail in through the Heads to anchor at Farm Cove for on-shore ceremonies. The Fleet will pass through a "guard of honour" of invited ships. This will be followed by the Parade of Sail. With official representatives from 14 countries, other international boats and boats from all over Australia, 200 boats are expected to take part in this parade. It will commence at the Harbour Bridge and move towards the Heads, saluting an official vessel on the way.

The Garden Committee has been able to secure several boats to participate in these events and can offer limited places on the following:

- Champagne Breakfast Cruise to greet the First Fleet on a ferry accommodating 100 persons. 9 am to 12 noon. Cost per person \$30.
- Luncheon Cruise to watch Parade of Sail on a ferry accommodating 100 persons. 12.30 am to 5 pm. Cost per person \$40.
- Luncheon Cruise aboard the yacht *Tarua*. This is an attractive cataraman with excellent views and we will be providing a gourmet seafood lunch on the covered deck. The cruise will be to watch the main harbour event. The Parade of Sail. 12 noon to 4 pm. Cost per person \$85.

Passengers will be picked up at Rose Bay for these cruises. The boats will be flying the National Trust flag. There will be more detailed instructions at a later date. Please complete the Ticket Application Page at the back of the Magazine for your tickets.

RAFFLE: The winner of the Market Day Raffle for the Wilkinson Sword garden tools was white ticket no. B96 held by Mr M. Russell of 134 Killarney Drive, Killarney Heights.



Camden Park Open Weekend

The Camden Park Preservation Committee invites members of the National Trust and their friends to the annual Open Weekend. This year, in addition to all sections of the House and Garden, the stables will be open where there will be an Art Exhibition.

Light refreshments, Garden Stalls, and the House shop will be open; you are welcome to picnic in the grounds. At 1.15 p.m. each day there will be a short talk about the house and family who have occupied it. For tickets see below.

Order Form

For Weekend September 26-27

There will be three sessions. Please apply for tickets by sending a cheque together with a **stamped self addressed envelope** to C.P.P.C., Box 21, Menangle 2568 for return of tickets.

Please send tickets at \$4.00 each. Members of National Trust.
Please send tickets at \$5.00 each. Non-members.

Please indicate required session:

- 1. Saturday 1.30 - 4.30 p.m.
- 2. Sunday 10.30 - 12.30 p.m.
- 3. Sunday 1.30 - 3.30 p.m.



REGIONAL ACTIVITIES

CAMEO COMMITTEE WINTER DINNER

Friday, July 24

The Cameo Committee of the Trust's Illawarra Shoalhaven Branch are holding a dinner at the Baker and Bunyip Restaurant, Berry at 7.30 pm on July 24. This is a return visit to the restaurant which is housed in an historic bakery building (c.1880). Members are invited to join in and select from the restaurant's menu offering three choices for each of three courses. Cost is \$28 for members and \$30 for non-members. A bus will be provided from Wollongong, picking up en-route to Berry at a cost of \$6. For more information and tickets, please telephone Carolyn Banting on (042) 28 7692 before July 10.

ADVANCE NOTICE SHOALHAVEN RIVER HISTORIC CRUISE

Sunday, October 18

The Cameo Committee has organised a full day cruise on the Shoalhaven River. Departing mid-morning from Shoalhaven Heads on the *Jerry Bailey*, you will cruise to Legge Island viewing some of the River's historic sites along the way. Morning tea and lunch will be provided. Details will appear in the next issue of the Magazine.

WINTER WEEKEND SEMINAR ON GARDEN HISTORY

RIVERINA REGIONAL COMMITTEE

Saturday and Sunday, July 25-26

This, the second annual Winter Weekend Seminar on Garden History, is being organised by the National Trust's Riverina Regional Committee in association with the Australian Garden History Society ACT Monaro and Riverina Group. Country and Cottage Gardens is the topic for this weekend. The venue will be the Wagga Campus of the Riverina-Murray Institute of Advanced Education.

Programme:

Saturday:

- 1.15-1.30 pm Welcome to Participants.
- 1.30-2.15 pm Michael Bligh, landscape architect from "Pejar Park".
- 2.15-3.00 pm Jim Webb, Wagga horticulturalist.
- 3.00-3.30 pm Afternoon Tea.
- 3.30-4.15 pm Mary Davis, Sydney garden designer.
- 4.15-5.00 pm Peter Cuffley, author of books on cottage gardens.
- 5.00-5.30 pm Questions and discussion.
- 7.00 pm Dinner at Dallows Restaurant, Wagga.

Sunday: 9.00-1.00 pm Visits to a cottage garden, an unchanged Victorian style park and a country garden.

Cost: \$50 per person including dinner. Accommodation has been arranged at the Old Wagga Inn Motel at rates of \$47 single and \$50 double or twin. These rates will be reduced by 10% should sufficient numbers book. Information on alternative accommodation in different price ranges can be supplied by ringing Wagga (069) 21 1935. R.S.V.P. by July 10 to: **R.J. Ratcliffe, 96 Hodgson Crescent, Pearce A.C.T. 2607.**

"GLENALVON HOUSE"

Built in 1839

No. 8 Lithgow Street
Campbelltown, NSW 2560
Telephone: (046) 25 2241



GLENALVON is one of the finest examples of a Colonial Georgian townhouse in NSW.

Glenalvon is neo-classical in style of finely cut sandstone with stone Tuscan columns and stone flagged verandah. The interior cedar joinery compliments a marbled hall with a graceful cedar staircase.

To ensure its preservation it has been restored with sensitivity. It is furnished with antiques and a fine and rare collection of early Australian Colonial furniture and English Georgian items.

Open for Public inspection —
10.30 - 4.30 pm. Sundays;
Other times by special arrangement.
Cost — Adults \$2.00;
Children & Pensioners \$1.00;
Groups \$1.50 per person.

Please send tickets for the Country & Cottage Seminar. Enclosed is payment at \$50 each.

I require single/double/twin accommodation at the Old Wagga Inn.

Should anyone wish us to arrange shared accommodation please note on slip when returning and we will see what we can do, however we cannot guarantee that this can be done.

Do not include accommodation with payment for tickets as this is to be made to the Motel on the date.

Please enclose a stamped addressed envelope for return of tickets.

CANOWINDRA WEEKEND

CENTRAL WEST WOMEN'S COMMITTEE

Saturday and Sunday, September 12-13

For the first time the Central West Women's Committee is taking you to the fascinating town and district of Canowindra.

Canowindra is a small rural town between Orange and Cowra, situated on the tree-lined banks of the Belubula River. As well as all forms of agriculture, the lucerne produced along the river is of a very high quality, and the alluvial flats give the district a distinct and most attractive character.

Gaskill Street, the main street, has changed little

Exhibition & Sale of Bauernmalerei
The Folk & Decorative Artists' Association
at "Eryldene"

July 25 & 26th 10 am to 4 pm
Unique hand painted furniture, clocks
& smaller gift items in the
European tradition
Enquiries: 44 2878

since coaches rattled through and attracted bushrangers such as Ben Hall, who, with his gang, once spent three days in the town. Gaskill Street, between Blatchford and Rodd Streets, is an Urban Conservation Area.

Saturday: will be spent visiting rural homesteads on either side of the Belubula:

Noojee Lea — a beautifully restored house in the best tradition of Australian rural architecture, with wide verandahs and extensive views. By courtesy of Mr and Mrs C.P. Curran.

Belubula — a brilliant modern house which is home to Mr and Mrs Glenn Eisenhower and their young family.

Alfalfa — by courtesy of Mrs Ailsa Payten. The original pise house was built over 100 years ago. Since then various additions have taken place to make it an interesting and attractive homestead.

Fairview, on the Rivers Road — by courtesy of Mr and Mrs W.T. Finn. Mrs Finn is a discerning and knowledgeable collector and the house is full of interest for our members.

At the famous *Killarney Stud* Mr Jack Honan has just completed a spectacular modern mansion which he has graciously consented to open for our members.

A picnic lunch will be served in the garden at Mr and Mrs David O'Dea's *Windowrie*. Please remember to bring your rugs. In the late afternoon all our guests are invited to meet in another garden for wine and cheese. This will be at *Gayton*, the property of Mr and Mrs Mark Ward.

Sunday's activities will centre round the town of Canowindra itself.

Trulee in Short Street — by courtesy of Mr and Mrs W.S. Flannery. This two-storey house was built by T.J. Finn, storekeeper and prominent citizen in Canowindra, for his large family. It is one of the most outstanding buildings in the town.

24 *Rodd Street*, Mr and Mrs K.P. Grant's attractive Victorian cottage.

The Museum is of a particularly high standard, reflecting the history of the entire district and the people who have lived there. Close by is the *Early Railway Cottage*. This complex and the main street will provide visitors with an appreciation of the early times of Canowindra.

As a finale, an elegant catered lunch will be served in the garden of *Lockwood*, Mr and Mrs Dudley Stone's property. Guests may enjoy this at their leisure before their return journey.

TICKET APPLICATIONS

CENTRAL WEST WOMEN'S COMMITTEE
CANOWINDRA WEEKEND

September 12 to 13

..... Members	@ \$12	\$:
..... Non-members	@ \$14	\$:
..... Lunch Saturday	@ \$ 6	\$:
..... Lunch Sunday	@ \$12	\$:
One day tickets:			
..... Members	@ \$8	\$:
..... Non-members	@ \$9	\$:

Send application form, together with cheque and stamped, self-addressed envelope to **The Ticket Secretary, Central West Women's Committee, The National Trust of Australia (NSW), PO Box 556, Bathurst, NSW, 2795.** Inquiries telephone (063) 31 4203. Cheques should be made payable to: C.W. Women's Committee, National Trust of Australia (NSW).



WOMEN'S COMMITTEE

GENERAL INFORMATION

Tuesday house inspections are for Trust members only and we regret that numbers must be restricted. For country visits and special events it is usually possible to include members' friends. In fairness to householders, children under twelve cannot be admitted to house inspections. Please commence your last inspection at least ten minutes before close of viewing time. Coach tours, organised for country days and weekends are strictly for members only owing to limited accommodation. For details see coach tour application.

Please note: Due to increase in membership, early application for tickets is imperative and it is essential that tickets be produced for admission to house inspections. It is suggested that, if convenient, members should apply for the afternoon session for house inspections as this is usually less heavily booked and more leisurely viewing is possible.

The closing date for ticket applications is seven (7) days before the event. Please apply for all Women's Committee Activities tickets on the Ticket Application Page on Pages 33 and 34

PADDINGTON DAY

Tuesday, July 14
Trust members only

140 *Paddington Street*, Paddington, by courtesy of Mr and Mrs Keith Cottier. The well-known Sydney architect, Keith Cottier, and his family acquired this two-storey house three years ago. Whilst the facade is traditional, the fully renovated, gleaming white interior includes generous use of sky-lighting, an abundance of northerly sunlight and superb contemporary architectural design. Exciting additions have been made to the eastern section.

44 *Cambridge Street*, Paddington, by courtesy of Mrs Christine Spindler. This elegant three-storey home (c.1890) was recently acquired by Mrs Spindler and required only minor renovations. Mrs Spindler's professional decorating taste is superbly illustrated here, both in style and in fabric use.

These houses are not within reasonable walking distance of each other, but parking should be available close to each.

DOUBLE BAY DAY

Tuesday, August 11
Trust members only

75 *Ocean Avenue*, Double Bay, by courtesy of Mrs P. Stuart. Originally this was a small cottage, but in the 1930s the architect Professor Wilkinson altered it extensively. These alterations made it the charming, gracious house it is today, with its columns so characteristic of that great architect.

4 *Wiston Gardens*, Double Bay, by courtesy of Mr F.M. Douglas and Mrs S.K. Baldvinsdottir. Professor Wilkinson designed this house in 1936 and like all his houses, it is airy and full of light. The view over Double Bay and Point Piper is seen from an unusual angle.

5 *Wiston Gardens*, Double Bay. This 1986 house was built on part of the garden of no. 6 *Wiston Gardens*, which, like no. 4, is a Professor Wilkinson house. So the Heritage Council required

that no. 5 should be in sympathy with the Wilkinson houses on either side. The architect James Fayers designed this palatial house, and its Mediterranean pink colour and balustrade across the terrace certainly gives it a Wilkinson feel.

PYMBLE DAY

Tuesday, September 8
Trust members only

23 *Church Street*, Pymble, by courtesy of Dr and Mrs Lewis Davies. This large, two-storey Federation house, built in 1901, has a commanding position on a ridge overlooking the Pymble Valley. The fine garden was restored with the help of well-known conservation architect Clive Lucas.

32 *Hope Street*, Pymble, by courtesy of Mr and Mrs Bruce Williams. This is a contemporary house, designed in 1963 by Geoffrey Lumsdaine, and as it fits so well into the hillside it is a good example of the integration of house and site.

SPRING WEEKEND IN THE MONARO

Saturday to Monday, October 3-5
Trust members and friends

The Southern Tablelands area that we call the Monaro (from the aboriginal word meaning "treeless plains") was discovered in 1823 by Captain J.M. Currie. The first settler arrived just four years later, and by 1849 the village of Cooma had been laid out as the centre of a prospering pastoral district. Its development accelerated after the discovery of gold at Kiandra in 1859 and in 1879 the village became a municipality. The town received its greatest boost in 1949 when it was chosen as the headquarters of the Snowy Mountains Hydro-Electric Authority and work on the Snowy Mountains Scheme through the 1950s and 1960s swelled the town's population to over 10,000. As this is a long weekend, early booking for accommodation in Cooma, Berridale or nearby towns is advised. Limited accommodation is available at Rose Valley. Apply: Dominic See, Rose Valley, Cooma, NSW, 2630, or telephone (064) 82 2885. *Please note* — all visitors should be prepared for cold weather, and in case of rain, please bring soft slippers for house inspections.

Saturday: 10 am-12.30 pm, 2-4 pm

Houses to be inspected are:

Coolringdon, Cooma, by courtesy of Mrs Betty Casey Litchfield. The oldest section of this charming house was built in 1825-30, and there is an 1880 addition. It is set in a most beautiful garden.

Blairgowrie, Buchan Parade, Cooma, by courtesy of Mrs Vibike Droga. Mrs Droga recently bought this 130 year old weatherboard house surrounded by twelve acres of land, and has renovated it most skillfully to make it a fitting setting for her beautiful furniture and objets d'Art.

No. 1 *Creek Road*, Cooma, by courtesy of Mr and Mrs Jan Klima. This century-old house has been beautifully restored. Two wings have been added and other changes made but the essential Georgian character has been retained.

Ketton Plain, Cooma, by courtesy of Mr and Mrs E.B. Haslingden. Two wings have been added to this fine old stone house, but with great care and sympathy for the existing roofline. The garden is a delight.

Luncheon: 12 noon to 1.30 pm. To be held in the grounds of *Coolringdon*, arranged by the Pine Lodge Sheltered Workshops. A light lunch of sandwiches, cake, fruit and wine or orange juice. Tea and coffee will not be available so if you wish to have these please bring thermos and etc. Cost is \$6 per person.

Sunday: 10.30 am-12.30 pm, 2-4 pm

Rose Valley, Rose Valley Road, Cooma, by courtesy of Mr and Mrs J.H. See. This beautiful homestead is set in three acres of gardens, with tennis court and pool, and containing two cottages for guest accommodation, one of which dates from 1840.

Dromore, Monaro Highway, Cooma, by courtesy of Mr and Mrs A.K. Kaurin. The homestead, dairy and stables have been classified by the National Trust. The original homestead was built c.1830-40, and the present homestead c.1840.

Cloyne, Rose Valley Road, Cooma, by courtesy of Mr and Mrs A.F. Pfeiffer. Not only is there a fascinating house at *Cloyne*, but also a craft centre specialising in embroidery and tapestry, a nursery with an enormous selection of zonal and ivy geraniums, and a heritage rose garden.

Luncheon: 12 noon to 1.30 pm. To be held at *Cloyne*. Lunch includes lamb with apricot and walnuts, salad, cake, wine, orange juice, tea or coffee. Cost is \$10.

Monday: Morning only, starting 9.30 am

Lambie Town Walk

Meet at the Hain Centre, Sharp Street (Monaro Highway) from where Mr Lindsay Hain and three to four guides will conduct visitors on this fascinating walk through residential and natural areas of scenic and historic interest. We will see such sites as Solomon's Store and Cooma Hotel c.1862, the Post Office 1879, Court House 1886-1888 and H.M. Prison which opened in 1873. Visitors may prefer to walk by themselves and a map will be reproduced in the Cooma-Monaro leaflet.

St Patrick's Catholic Church, c.1867, Murray Street, Cooma, by courtesy of Father Barry Cotter. This church is built of stone quarried on the site.

St Paul's Anglican Church, Commissioner Street, Cooma, by courtesy of the Reverend Keith Stephens. The foundation stone of the church was laid in 1865. The materials used include local granite and alpine ash, and the furnishings were carved out of English Oak.

Christ Church, Church Road off Monaro Street, Cooma. This was the original Anglican Church for Cooma, built in 1845 and restored in 1960.

The Raglan Gallery in Lambie Street

This building was originally the Lord Raglan Inn, (1854), Cooma's first licensed hotel and its first bank. The gallery shows paintings by nationally-known and local artists, wall-hangings, ceramics and oriental rugs.

Luncheon: 11.30 am to 12.30 pm. A light, take-away luncheon of sandwiches, cake or slice, and fruit, packaged by the Cooma Red Cross, will be available at the Raglan Gallery. Tea and coffee will not be available, so if you wish to have these please bring thermos and etc. Cost is \$5 per person.

SPRING WEEKEND IN THE MONARO COACH TOUR

Friday to Monday, October 2-5

An all inclusive coach tour has been arranged for *members only* for the long weekend in the Monaro. The coach will depart on Friday, October 2, from St Leonards Station Goodyard at 9.30 am and from the Scots Church, York Street, Sydney at 9.45 am, returning to Sydney at approximately 6.30 pm on Monday, October 5.

Tickets are \$271 for twin share accommodation and \$285 with single supplement (very limited) and may be applied for on the Ticket Application Page at the back of this Magazine. Tickets will cover the cost of transport, accommodation at Cooma Motor Lodge, Cooma, for three nights with dinner and breakfast, lunches on Saturday, Sunday and Monday, and house inspection tickets.

Cont, Page 31



WIRES Wildlife Art Exhibition

JULY 4-19

THE LONG GALLERY, AUSTRALIAN MUSEUM

Some of Australia's best and most prestigious Artists will be exhibiting works in a variety of media, concerning our Continent's unique Wildlife. These works will be for sale, with proceeds going to the N.S.W. Wildlife Information and Rescue Service (WIRES) - which helps thousands of injured animals every year.

PATRONS OF THE EXHIBITION ARE -

Densley Clyne, Richard Morecroft and Jill Hickson

Premiere Night - July 3 at 8pm - food, music and first choice among the works.



If you would like to come, just send \$10.00 person and a self addressed envelope to: WIRES, P.O. Box 571, Manly 2095, NSW., to book a ticket.

For further information phone 977-4725 (6h) or 887-2105 (a.h.)

Ireland: Land of Saints and Scholars

Led by Dr. Aedeen Cremin and Professor Ian Jack from the University of Sydney, this 25-day tour will concentrate on the Celtic history of Ireland. The tour will commence in Dublin from where it will follow the paths of the Celtic Saints, scholars and monks as they established their monasteries and abbeys. Highlights include the prehistory sites of Tara and Newgrange, Killarney, Craggaunowen, the Yeats country, Letterkenny and Longford.

Departs: 8th August, 1987

The Many Faces of Egypt

A 24-day tour which incorporates the pleasure in cruising from Cairo to Aswan. Among the unique and fascinating highlights will be visits to the earliest "true" pyramid at Meidum, the Middle Kingdom mud-brick pyramids of Hawara and Lahun in the Fayyum and the Ptolemaic town of Karanis on the desert edge. Other key sites include the rock-cut tombs of Beni Hassan, the sacred centre of Abydos, and the magnificent Valley of the Kings.

Departs: 10th October, 1987

Modern Art in America

Led by Bill Wright from the Art Gallery of New South Wales this 24-day tour will introduce the finest collections of art conserved in private, commercial and state galleries and museums of New York, Washington D.C., Los Angeles and San Francisco. The tour will incorporate special receptions and tours of the major art galleries and museums and highlights include visits to artists studios, discussions with art critics and curators, and visits to some of the most exceptional small collections on the east and west coasts.

Departs: 1st November, 1987

For further information, please contact Christine Mignacca:

Penthouse Travel (A.J.C.)

14th Floor, 109 Pitt Street,
Sydney, N.S.W., 2000.

Telephone: (02) 231 1155 : Telex: AA 73192
Licence No. B1853

GREGORY FORD ANTIQUES



DEALERS IN AUSTRALIAN FURNITURE
264 OXFORD ST. PADDINGTON • (02) 331 5147
HOURS • TUE-FRI 12-5 PM • SAT 10 AM-3 PM

LEWIS & LEWIS CABINETMAKERS

20A City Road, Chippendale 2008
Phone (02) 212 1257

We are makers of finely detailed free-standing and built-in furniture. When necessary the detailing on new items will be made to match or integrate with any period or stylistic features of your residence.

All pieces are made from proper cabinet timbers and are meticulously polished to show the natural beauty of the grain patterns.

If you require any type of domestic cabinetmaking (wall units, stereo and video cabinets, bookcases, library shelving, kitchens) in any style please phone Craig Lewis on 212 1257 and arrange for a free quotation.



YOUNG TRUST

spectacular location on North Head. Guided tours will illustrate the importance of this site both historically and architecturally.

Cost: Members \$7, non-members \$8, children \$6 (includes return bus fare to and from Manly Wharf as there is no parking at the Quarantine Station).

Organiser: Lee Wright (02) 550 0339, weeknights 7-9 pm.

STEAM TRAIN NOSTALGIA

Sunday, August 2. All day.

Take a trip back to the early decades of this century by riding a steam train to the historic Thirlmere Rail Museum, 100 kms south of Sydney at Thirlmere. This museum was established and is run by steam train enthusiasts who are keen to preserve NSW rail history. There is a selection of over 40 vintage locomotives plus period rolling stock and equipment on display at the museum.

As well as providing a fascinating collection of railroad memorabilia, this open air museum has picnic and BBQ facilities and free guided tours of the complex. This is a great family outing with a return trip on a vintage train and three hours at the museum for a leisurely inspection and your BYO lunch.

Cost: Members \$20, non-members \$22, children under 14 \$10. Please apply for tickets on the application page at the back of this Magazine.

Organiser: Tim Ball (02) 587 9701, 7-9 pm weeknights.

ROCKS ARCHIVES VISIT

Saturday, August 15

Like to find out where some of the State's most valuable archives are housed? Join the Young Trust in Sydney's historic Rocks area for a seminar and guided tour of the Globe Street Centre. The Centre, in particular, provides good facilities for research into local histories and family genealogy.

One of the Centre's archivists will outline the history of the collection, with some mention of conservation and preservation methods. Audio-visuals will accompany the lecture and you will be able to view some examples and ask questions. Each session will commence with an introduction to the archives then the morning session will deal with records of births, deaths, marriages, shipping and convicts. The afternoon session will cover land, education and the Colonial Secretary's records.

Cost: Members \$8, non-members \$10. Please apply for tickets on the application page at the back of this Magazine.

Organiser: Patricia Glanville, (02) 344 9174, 7-9 pm weeknights.

Cont, Page 32

A DAY IN KILLARA

Tuesday, October 13
Trust members only

17 Fiddens Wharf Road, Killara, by courtesy of Mrs Margaret Gardner. This house with its lovely outlook over Killara Golf Links, was designed by the architects Provost, Synott and Ruwald about 60 years ago.

28 Greengate Road, Killara, by courtesy of Mr and Mrs J.P.C. Watson. This house like Aladdin's Cave, is full of delights collected by the owners who have great knowledge and skill in the acquiring of beautiful and unusual objects.

ADVANCE NOTICE

QUILTING EXHIBITION

From November 6 to November 15, the Women's Committee will be mounting a most important exhibition at *Lindesay*. It is to be a collection of heirloom quilts, many of museum quality. The majority will come from two celebrated American collectors, others from Australian sources.

The craft of quilt making has been practised by men and women of America and Australia since the arrival of the first settlers. They provide us with rich examples of the textiles used in clothing, household furnishings and decorative arts. Pieces of petticoats, shirts, party and wedding dresses, and clothes of the dear departed are sometimes incorporated with scraps of flags, curtains, bandannas, political and show ribbons. In convict times, each woman sentenced to transportation was provided with 2 lbs of patchwork pieces for the long and arduous voyages. So quilts have become significant documents of the past, and their strong graphic qualities were the forerunner of contemporary graphic art. The first time that quilts were taken from beds and hung on museum walls was in New York in 1971 at an exhibition called *Abstract Design in American Quilts*, and their extraordinary visual impact instantly proclaimed them as art rather than craft.

The American quilt collectors who are lending some of their treasures are Mrs Shelley Zegart and Mrs Marie-Louise Lacazette, both members of the Kentucky Quilt Project, and Burlington Northern Air Freight Pty Limited will be transporting the precious cargo from Kentucky to Sydney and back.

Further details will be published in the September Magazine, but make a date in your diary now to visit *Lindesay* between Nov 6 and Nov 15 to see these beautiful works of art which are, in fact, pages of history.

SATURDAY IN THE BLUE MOUNTAINS

November 7
Trust members and friends

Spring comes later to the Blue Mountains than to Sydney, so the lovely gardens surrounding the fine houses we shall see should be full of blossom and scent. Houses in Leura and Wentworth Falls will be on view. Details will appear in the September issue of the Magazine.

GIFTS-IN-A-BASKET

We are delighted to announce that the Government has recently altered the law relating to liquor, and now wine and spirits may be included in baskets provided that flowers or food (such as fruit, cheese or chocolates) are also included.

RAFFLE: For the Day at Bayview and Ingleside, Gallery Six of Mona Vale generously donated a pair of ceramic bird plaques to be raffled. They were won by Mrs Doygan with ticket no. 8002.

GENERAL INFORMATION

Unless otherwise stated, anyone may attend the functions and activities organised by the Young Trust. However, while most activities are suitable for people of any age in reasonable health, some require a greater degree of physical fitness or may appeal more to people with a young outlook. Any such qualification should be evident in the wording of the activity description.

The Young Trust receives numerous inquiries regarding activities, and tickets. Please direct all calls about venues and times to the Organiser whose name appears below the activity concerned. Activity Organisers cannot provide any information about whether tickets are still available for the activity. This information can only be supplied by the National Trust Ticket Secretary.

Please apply for tickets for Young Trust activities on the Ticket Application Page (Pages 33-34) in this Magazine. Read the instructions on Page 32 carefully.

The closing date for ticket applications is seven (7) days before the event.

The Young Trust has their Activities Meeting the third Tuesday of each month in the Council Room at the National Trust Centre, Observatory Hill, Sydney, from 6 to 8 pm. Forthcoming activities are planned and we welcome any interested persons who would like to attend a meeting, take part in organising an activity or offer suggestions for future activities. Inquiries: Lee Wright (02) 358 2655 (W).

BASTILLE DAY LUNCHEON

Sunday, July 12

Celebrate Bastille Day at Curzon Hall and dine in opulent surroundings suitable for the anniversary of the storming of the famous Paris goal. The Young Trust has booked the lovely Agincourt Room upstairs, overlooking the gardens of this elegantly restored mansion at Marsfield (near Macquarie University). In 1890 self-made businessman Harry Smith spared no expense in building his show piece, Curzon Hall, to rival anything then existing in Sydney. He lived in glorious style until 1922 when the mansion was sold to the church. In the early 1980s the decline of this remarkable edifice was halted when it passed into private hands. Curzon Hall was lovingly restored to its former glory and became one of Sydney's well known reception centres. Enter into the spirit of *Quatorze Juillet* and join us. (There is ample parking in Curzon Hall's grounds.)

Cost: Members \$24, non-members \$26.

Organiser: Gerard Soussan (02) 92 1256, 7-9 pm weeknights.

NORTH HEAD QUARANTINE STATION

Saturday, July 18, Aug 29. Mid-afternoon.
Sunday, July 26, Aug 9. Mid-afternoon.

The North Head Quarantine Station traces Australian history from 1832 to 1984 in its association with immigration to Australia. The site includes buildings dating from 1860 and is an important part of Sydney Harbour National Park with its

GLENFIELD FARM OPEN DAY

Sunday 20 Sept 10-4

Guided Tours of 1810 Homestead
Craft Stalls
Devonshire Teas
Events for Children
Herb Nursery
Leacock's Lane Casula
602-8095



SYDNEY'S HEADLAND FORTS

Saturday, Aug 15. All day.

Sunday, Aug 16, 30, Sept 13. All day.

More chances for Trust members to visit forgotten tunnels and casemate forts near Middle Head, Mosman. Ever noticed the curious gun holes in the cliff from the Manly ferry? The cliff tops housed a bewildering variety of weapons firing everything from small iron balls to 400 pound shells. Some were on hinged mounts and rose above ground for a quick shot. Lovers of Sydney's sandstone architecture will find various and bizarre examples underground and will find out colonial architect James Barnet's biggest error.

National Park Rangers will give the tours, each two hours in length, with a break for lunch (eat at Mosman shops or BYO for a picnic on the rocks above Obelisk Beach). Car transport is needed so please ring the organiser if you can offer or need a lift.

Cost: Members \$6, non-members \$8, children \$3 (*do not* bring children under 15). (Numbers are limited to 25 per tour for safety reasons).

Organiser: Bob Halliley (02) 339 8511, 9 am-3.30 pm only.

BULLAWARRING TRACK WALK

Saturday, August 29

This is a chance to enjoy the bushland of the historic but little used Bullawarring Track in Heathcote National Park. Bring your picnic lunch and your children on a medium walk of about 11 kms. We will visit the Old Railway Dam, Kingfisher Pool and Mirang Pool on Heathcote Creek. We will meet at Waterfall Station (parking available) and walkers will return from Heathcote Station to Waterfall Station by train at the end of the walk.

Cost: Adults \$6, Children \$3.

Organiser: John Oakes, (02) 57 6863 until 10 pm each evening.

POWERHOUSE MUSEUM STAGE I & II INSPECTION

Sunday, September 6

We will be escorted through Stage I to view the exhibition *German Design 1840 to the Present* and into the workshops to see the conservation area, the areas where exhibits are fabricated and where large objects are restored. In Stage II, due to be completed in 1988, we will see those parts of construction that are safe for viewing as well as the various planned exhibition areas and inspecting the progress of construction of the exhibits. The public is not normally allowed on the construction site of the Powerhouse Museum, so this is a good opportunity to see the development of Stage II.

Cost: Members \$5, non-members \$7, children

under 12 \$4. Please apply for tickets on the application page at the back of this Magazine. NB Stage II is a hardhat area and parents take younger children at their own risk as the protective headgear is too large for children. Numerous tours are being organised. Morning bookings start at 11.45 am and work backwards as each time slot fills. Afternoon tours start at 12 noon and run onwards. If tours in your preferred time range are full we reserve the right to place you where possible unless you specifically advise on the application page "only morning" or "only afternoon".

Organiser: Lee Wright (02) 550 0339, 7-9 pm weeknights.

DAVIDSON PARK CAMP-A-LONG AND/OR BUSHWALK

Saturday and Sunday, October 24-25

Davidson Park State Recreation Area is Sydney's newest camping area and only 15 kms from the GPO. We leave the camping gear at the meeting point where it will be transported to the campsite. We will then be bused to the start for a leisurely walk down through the park, a BYO lunch at an idyllic spot by two streams and then continue the walk to the riverside bush campsite. Dinner will be a spit roast with all the trimmings around the campfire so bring your musical instruments to help with our sing-a-long. Next morning after breakfast there will be a ferry ride to explore Bantry and Sugarloaf Bays. This activity will end after the ferry ride but the Park has a kiosk and has cycles and canoes for hire if you wish to continue the fun.

Cost: Full weekend: Members \$24, non-members \$26, children (7-13 years) \$19. Saturday walk and meal only: Adults/Children \$15

Organiser: David Bruce-Steer (02) 419 7017 weeknights 7-9 pm.

BARREN GROUND WEEKEND

Friday night to Sunday, Nov 20-22, 27-29.

Barren Ground Nature Reserve is a heathland located south of Wollongong between Jamberoo and Robertson and is home to two endangered species of bird, the Ground Parrot and the Bristlebird, as well as supporting a wide and varied flora.

Arrive Friday night by 8 pm for a weekend featuring guided heath walks studying the prolific spring flowers, watching the wardens net and band birds and trap small mammals for scientific study. Accommodation is a convivial rustic lodge and all meals are provided. You only bring a towel, and sheet and blanket or sleeping bag. It is a fully organised weekend and great fun.

Cost: Young Trust members only \$76. Limited to 16 per weekend, so book early.

Organiser: Lee Wright (02) 550 0339, 7-9 pm weeknights.

Application for tickets

Please Read These Instructions First

The office of the National Trust Ticket Secretary is located at the Trust property *Lindesay* at Darling Point. All Ticket Application Pages should be sent to the Edgecliff address stated below. *Do not* send application pages to the Trust Centre at Observatory Hill.

To help the Ticket Secretary, a central ticketing computer has been installed. This requires information from the whole Ticket Application Page. *Do not* cut up the Page. Tickets will not be issued if the whole Page is not sent.

Please read the following instructions carefully:

Send

(1) the *entire* page, completed, together with

(2) a stamped self-addressed **23 cm x 10 cm (9 in x 4 in) envelope, (not 3½ in x 6 in) plus**

(3) a cheque or postal order payable to the National Trust, or Bankcard details, to the following address:—

National Trust
Ticket Secretary,
PO Box 53

EDGECLIFF, NSW, 2027.

- Admission will only be allowed on presentation of tickets.

- All members wishing to attend activities with their friends must apply on the same application page in order to receive tickets in the same group.

- Refunds will only be allowed where one week's notice is given and tickets returned for re-sale. A cancellation fee may be charged in some instances.

- Membership payments should *not* be included with activity payments.

- No telephone bookings will be accepted but inquiries regarding tickets can be directed to the Ticket Secretary on (02) 32 2401 between 9.30 am and 1.30 pm.

IF YOU ARE LOOKING FOR MINIATURES LOOK TO . . .



Houseworks

for the highest quality . . .
the most complete range of:

DOLLHOUSE doors, windows, plans, stairs, kits, wallpaper, lighting, quality furniture, kit furniture, accessories including procelain and pewter miniatures from England.

JUST ARRIVED — the perfect vignette to show off selected miniatures or dolls about the home.

Inspect or send for catalogue—

Houseworks

229 Canterbury Road, St. Kilda
West 3182. Tel. (03) 534 7063
21 Carlos Road, Artarmon 2064
Tel. (02) 419 4013

NATIONAL TRUST ACTIVITIES

TICKET APPLICATION PAGE

JUNE 1987

Applicant's Name

Membership No

Applicant's Address

..... Postcode

Telephone (H) (W)

Other names & no/s

My cheque for \$..... is enclosed

I wish to pay by Bankcard \$.....

Card number

Expiry date

Cardholder's name

Signature

Office use only

Date received

Chq/Bankcard/other

Tickets issued

Posted

Refund sent

Tick this box if you require a repeat order form with your tickets.

BASTILLE DAY LUNCHEON

Young Trust
 Sunday, July 12

..... Members	@ \$24	\$:
..... Non-members	@ \$26	\$:

PADDINGTON DAY (Trust members only)

Women's Committee
 Tuesday, July 14

..... Tickets	@ \$6	\$:
---------------	-------	----	---

Please state order of preference:

.....	10.30 am to 12 noon
.....	12.30 pm to 2 pm
.....	2.30 pm to 4 pm

THEA PROCTOR — AN ART EVENT

Trust Headquarters
 Thursday July 16

..... Tickets	@ \$18	\$:
---------------	--------	----	---

NORTH HEAD QUARANTINE STATION

Young Trust
 Saturday, July 18

..... Members	@ \$7	\$:
..... Non-members	@ \$8	\$:
..... Children	@ \$6	\$:

WINTER GARDEN SEMINAR

Garden Committee
 Thursday, July 23

..... Tickets	@ \$30	\$:
---------------	--------	----	---

THEA PROCTOR LECTURE

Trust Headquarters
 Thursday, July 23

..... Tickets	@ \$6	\$:
---------------	-------	----	---

WINTER WEEKEND GARDEN SEMINAR

Saturday and Sunday, July 25-26
 Tickets, see Page 28.

NORTH HEAD QUARANTINE STATION

Young Trust
 Sunday, July 26

..... Members	@ \$7	\$:
..... Non-members	@ \$8	\$:
..... Children	@ \$6	\$:

STEAM TRAIN NOSTALGIA

Young Trust
 Sunday August 2

..... Members	@ \$20	\$:
..... Non-members	@ \$22	\$:
..... Children	@ \$10	\$:

(under 14)

VISIT THE STUDIO OF SALVATORE ZOFREA

Friends of the S.H. Ervin Gallery
 Sunday, August 9

..... Members	@ \$15	\$:
..... Non-members	@ \$16	\$:

NORTH HEAD QUARANTINE STATION

Young Trust
 Sunday, August 9

..... Members	@ \$7	\$:
..... Non-members	@ \$8	\$:
..... Children	@ \$6	\$:

DOUBLE BAY DAY

Women's Committee
 Tuesday, August 11
 (Trust members only)

..... Tickets	@ \$6	\$:
---------------	-------	----	---

Please state order of preference:

.....	10.30 am to 12 noon
.....	12.30 pm to 2 pm
.....	2.30 pm to 4 pm

ROCKS ARCHIVES VISIT

Young Trust
 Saturday, August 15

..... Members	@ \$8	\$:
..... Non-members	@ \$10	\$:

NB State your preference AM/PM session.

SYDNEY'S HEADLAND FORTS

Young Trust
 Saturday, August 15

..... Members	@ \$6	\$:
..... Non-members	@ \$8	\$:
..... Children	@ \$3	\$:

Sunday, August 16

..... Members	@ \$6	\$:
..... Non-members	@ \$8	\$:
..... Children	@ \$3	\$:

CONSERVATION LABORATORY CONSERVATORS LECTURE

Friends of the S.H. Ervin Gallery
 Wednesday, August 19

..... Members	@ \$8	\$:
..... Non-members	@ \$10	\$:

BRILLIANCE OF THE MACCHAIOLI

Friends of the S.H. Ervin Gallery
 Wednesday, August 26

..... Tickets	@ \$10	\$:
---------------	--------	----	---

BULLAWARRING TRACK WALK

Young Trust
 Saturday, August 29

..... Adults	@ \$6	\$:
..... Children	@ \$3	\$:

NORTH HEAD QUARANTINE STATION

Young Trust
 Saturday, August 29

..... Members	@ \$7	\$:
..... Non-members	@ \$8	\$:
..... Children	@ \$6	\$:

Sub-total	\$ _____ :
	(carry overleaf)

TICKET APPLICATION PAGE (CONT.)

(from previous page)

Sub-Total \$:

SYDNEY'S HEADLAND FORTS

Young Trust
Sunday August 30

..... Members	@ \$6	\$:
..... Non-members	@ \$8	\$:
..... Children	@ \$3	\$:

POWERHOUSE MUSEUM STAGE I & II INSPECTION

Young Trust
Sunday, September 6

..... Members	@ \$5	\$:
..... Non-members	@ \$7	\$:
..... Children (under 12)	@ \$4	\$:

NB Please state your preference for AM/PM sessions.

PYMBLE DAY

Women's Committee
Tuesday, September 8
(Trust members only)

..... Tickets	@ \$6	\$:
---------------	-------	----	---

Please state order of preference:

..... 10.30 am to 12 noon	
..... 12.30 pm to 2 pm	
..... 2.30 pm to 4 pm	

CANOWINDRA WEEKEND

Saturday and Sunday, Sept 12-13

Tickets, see Page 28.

SYDNEY'S HEADLAND FORTS

Young Trust
Sunday, September 13

..... Members	@ \$6	\$:
..... Non-members	@ \$8	\$:
..... Children	@ \$3	\$:

POTTS POINT TALK AND WALK TOUR

Tours Co-ordinating Committee
Wednesday, September 16

..... Members	@ \$12.50	\$:
..... Non-members	@ \$14	\$:

SPRING PICTURE ON THE SOUTHERN ROAD

Friends of the S.H. Ervin Gallery
Saturday, September 19

..... Tickets	@ \$28	\$:
---------------	--------	----	---

Please tick preferred departure point:

..... St Leonards Station Goodsyard	7.15 am
..... Central Station, Eddy Ave	7.45 am
..... Strathfield Station, Parramatta Rd	8 am
..... Liverpool, Westfield Shopping Centre	8.45 am

SPRING GARDEN DAY

Garden Committee
Wednesday, September 23

..... Tickets	@ \$6	\$:
---------------	-------	----	---

ART IN SPRING IN NEW ENGLAND

Friends of the S.H. Ervin Gallery
Friday to Monday, Oct 2-5

..... Tickets	@ \$250	\$:
---------------	---------	----	---

WEEKEND IN THE MONARO COACH TOUR

Women's Committee
Friday to Monday, October 2-5

(Trust members only)

..... Tickets	@ \$271	\$:
---------------	---------	----	---

(Twin share accommodation)

..... Tickets	@ \$285	\$:
---------------	---------	----	---

(Single accommodation)

Note: Single accommodation is very limited. Please indicate if you are willing to share YES/NO

Please tick preferred departure point:

..... St Leonards Goodsyard	9.30 am
..... Scots Church, York St, Sydney	9.45 am

NB Applications for more than one must include names, addresses, telephone numbers and departure points for each member. Please supply these on a separate sheet of paper.

SPRING WEEKEND IN THE MONARO

Women's Committee
Saturday to Monday, October 3-5

..... Members	@ \$11	\$:
---------------	--------	----	---

..... Non-members	@ \$13	\$:
-------------------	--------	----	---

..... Lunch Saturday	@ \$6	\$:
----------------------	-------	----	---

..... Lunch Sunday	@ \$10	\$:
--------------------	--------	----	---

..... Lunch Monday	@ \$5	\$:
--------------------	-------	----	---

A DAY IN KILLARA

Women's Committee
Tuesday, October 13

(Trust members only)

..... Tickets	@ \$6	\$:
---------------	-------	----	---

Please state order of preference:

..... 10.30 am to 12 noon	
..... 12.30 pm to 2 pm	
..... 2.30 pm to 4 pm	

POSTMAN'S RUN ON THE HAWKESBURY RIVER

Tours Co-ordinating Committee
Wednesday, October 14

..... Members	@ \$35	\$:
---------------	--------	----	---

..... Non-members	@ \$36	\$:
-------------------	--------	----	---

AGM TAMWORTH WEEKEND COACH TOUR

Trust Headquarters

Friday to Sunday, Oct 16-18

(Trust members only)

..... Tickets	@ \$230	\$:
---------------	---------	----	---

(Twin share accommodation)

..... Tickets	@ \$268	\$:
---------------	---------	----	---

(Single accommodation)

Note: Single accommodation is very limited. Please indicate if you are willing to share: YES/NO.

Please tick preferred departure point:

..... Scots Church, York St, Sydney	8.30 am
..... St. Leonards Station Goodsyard	8.45 am
..... Hornsby, bus stop opp Florence St	9.15 am

AGM TAMWORTH WEEKEND

Trust Headquarters

Saturday and Sunday, Oct 17-18

..... Tickets including lunch Saturday	@ 22	\$:
---	------	----	---

..... Dinner Saturday	@ \$30	\$:
-----------------------	--------	----	---

..... Lunch Sunday	@ \$10	\$:
--------------------	--------	----	---

CHRISTMAS AROUND THE WORLD

Garden Committee
GALA OPENING

Wednesday, October 21

..... Tickets	@ \$25	\$:
---------------	--------	----	---

CHRISTMAS AROUND THE WORLD

Garden Committee
EXHIBITION

Thursday to Sunday, Oct 22-25

..... Adults	@ \$5	\$:
--------------	-------	----	---

..... Pensioners/ Students	@ \$3	\$:
-------------------------------	-------	----	---

DAVIDSON PARK CAMP-A- LONG AND/OR BUSHWALK

Young Trust

Saturday and Sunday, Oct 24-25

..... Members	@ \$24	\$:
---------------	--------	----	---

..... Non-members	@ \$26	\$:
-------------------	--------	----	---

..... Children	@ \$19	\$:
----------------	--------	----	---

..... Saturday walk and meal	@ \$15	\$:
---------------------------------	--------	----	---

BARREN GROUND WEEKEND

Young Trust

Friday night to Sunday, Nov 20-22

(Young Trust members only)

..... Tickets	@ \$76	\$:
---------------	--------	----	---

BARREN GROUND WEEKEND

Young Trust

Friday night to Sunday, Nov 27-29

(Young Trust members only)

..... Tickets	@ \$76	\$:
---------------	--------	----	---

GARDEN COMMITTEE'S AUSTRALIA DAY CELEBRATIONS, 1988

Garden Committee

Tuesday, January 26

Please place number next to each cruise in order of preference:

Champagne Breakfast Cruise

..... Tickets	@ \$30	\$:
---------------	--------	----	---

Luncheon Ferry Cruise

..... Tickets	@ \$40	\$:
---------------	--------	----	---

Luncheon Cruise on *Tarua*

..... Tickets	@ \$85	\$:
---------------	--------	----	---

Total \$:

Please transfer this total to the Application Details Panel on the previous page.



The National Trust Real Estate Service specialises in the sale of Georgian, Victorian and Federation houses in any condition. The Service also offers its members a property valuation service. Please contact the Real Estate Officer, Mark O'Neill, at the National Trust Centre, Observatory Hill on (02) 27 5374 for professional advice on your real estate matters.



OLD TOONGABBIE \$280,000
C.1850

A sandstone cottage, fully refurbished, situated in a quiet residential street on a double block of land. It features large public rooms with french doors onto the covered verandah surrounding the house. The ground floor comprises the main bedroom with en-suite bathroom; the large family room with original fireplace; the formal living room featuring a massive stone fireplace and stone walls; the open plan kitchen-dining room; second bathroom and laundry. Upstairs the attic space has been fully utilised by introducing dormer windows and providing a further two bedrooms, playroom and sewing room.



TARANA (NR. BATHURST) \$72,500
MUTTONS FALLS

Charming farmhouse, c.1830, comprising 3 separate buildings beautifully sited in picturesque surroundings on one acre near the Fish River, 16 km on the Sydney side of Bathurst. The main building, partially restored, has potential for two bedrooms, loungeroom, dining room and kitchen, with a two-bedroom outbuilding. The third building (the old kitchen) has a further two rooms and laundry. Ideally situated for a weekender. An inspection is imperative.



BATHURST \$295,000
COMMERCIAL PROPERTY

Two-storey brick building, c.1895, in good condition, in a strong commercial location with rear lane access. Gross lettable areas of 91m² on the ground floor and 75.43m² on the first floor. Currently let to two separate tenants and returning a gross income of \$26,150 pa, which can be improved on. Recorded by the National Trust, the property is in good original condition and presents as a sound investment in this sought after business precinct.



GOULBURN \$250,000
CORRINYAH

This impressive two-storey Federation home, c.1908, has many original features and stands on approximately 4.35 hectares. The home has 6 bedrooms, 4 bathrooms, large living, dining rooms, study, laundry and spacious billiard room. The home has commanding views of the surrounding countryside. Situated 6 km south of Goulburn, *Corrinyah* is accessible by a tree lined drive leading into well established gardens surrounding the house.



HARTLEY VALE \$300,000
COLLITS' INN

Built in 1823 as the Golden Fleece Inn. Classified by the National Trust and protected by a Permanent Conservation Order, this is a significant property associated with the opening up of the Western districts. Famous guests included Governor Darling in 1829 and Governor Bourke in 1832. A weatherboard building, it remains in good condition, virtually in an unaltered state. Situated on 81 hectares (200 acres) of grazing land, this property presents great potential for a number of uses, including bed and breakfast accommodation.



GUNDY \$100,000
THE OLD RECTORY

This Federation weatherboard residence has been extensively renovated and is constructed almost entirely from cypress. Pleasantly set in large established gardens which include a disused tennis court, the property comprises seven-eighths of a hectare and extends beyond the garden fence to include four vacant blocks of land. These are currently used as a horse paddock, bounded on one side by a river bank. The 35 squares of accommodation comprises 3 bedrooms, dining, family and living rooms, bathroom, modern kitchen, 2nd toilet, and two pantries. Behind the house is a freestanding self-contained one bedroom brick cottage, c.1885, providing an ideal granny flat or guest accommodation. Stables are also to the rear of the main house. Schools, shops and other amenities are closeby.



WILBERFORCE
REDUCED TO \$215,000
OLD POLICE STATION

Standing on 1½ acres in a rural environment on the edge of Wilberforce village, this single storey brick building has been fully restored, providing in the main building two bedrooms, living room, eat-in kitchen, bathroom, WC and laundry. At the rear are two cells and exercise yard in original condition. A detached brick building at the rear offers guest accommodation with a lounge room and bedroom. The curtilage is attractively landscaped and provides privacy from the road. The property presents as a superbly restored residence with great historical and local interest, while fully equipped for a comfortable modern lifestyle, five minutes from Windsor and a little over an hour from Sydney. Vendor is very genuine — committed on another property.



ARMIDALE \$325,000
"COMEY TROWE"

Two-storey Victorian house, built 1884, sympathetically extended several times, now providing 6-7 bedrooms, formal lounge, dining, kitchen, family, study, 2 bathrooms, laundry with toilet and shower, verandahs, courtyard and double garage. Set in large, gently sloping grounds, facing north, with mature trees, informal gardens and new tennis court. Located near City centre and schools (including NEGS and TAS), also close to the University and Teachers College. Would suit as home with attached professional suite or granny accommodation. Solid brick walls, plastered and painted to resemble stone, plenty of storage, heated and insulated, this fine house presents as a comfortable family home.



MARKET PLACE

STERLING SILVER CUTLERY. Wide range of new items in modern and classic patterns, made on order by English craftsmen and hallmarked at Sheffield. Full sets or single items available; knives a speciality (30 patterns). 3-12 week delivery, but substantial price savings. Typical seven piece place setting \$600-\$1000. A1 EPNS also available. Write or phone for leaflets: Mrs T. Mathew, PO Box 283, Gordon, 2072. Telephone: (02) 498 3522.

WATERCOLOUR house portraits. \$70 and \$140 mounted. Telephone A. Steel (02) 528 3718.

MEDLOW BATH. Two adjacent tastefully furnished cottages, open fireplace, lovely garden amidst peaceful bush-setting, barbecue corner. Pets welcome. Inquiries, telephone (047) 87 8511.

HISTORICAL Hunter Valley Discovery Tours in air-conditioned coach. Six days, 5 nights, all inclusive. Charming private guest house accommodates up to 20 people. Highlights of tours include items of interest to National Trust members. Telephone (049) 65 1655 or write to 657 Cabbage Tree Road, Williamtown, 2301. Proprietor: R. & J. Stewart.

WANTED TO BUY jewellery and clothes pre-1945 Margo Richards (02) 232 3870.

BLACK BEETLE boot jacks \$25 Margaret McLean telephone (058) 871 212.

MARBLE FIREPLACES, leadlights, windows, doors, columns, lacework. Bought and sold. (02) 660 0100.

PHOTOGRAPHS copied retouching available, reasonable rates. Kerrim Cook (02) 456 113 (evenings).

BICENTENNIAL CHAIRS. Rare set of six English rush-seated ladder back chairs of unusual design, dated 1780-1820. Fine condition. Price on request. Telephone (weeknights/weekends) (02) 692 9096.

SATSUMA JEWELLERY, collector seeks. Also interested meeting collectors. Lee (02) 358 8422 (W).

SPRING IN VICTORIA. Ten days tour of gardens and historic places lead by John Morris and Shirley Stackhouse. October 16th to 25th 1987. For brochure phone Friends of the Royal Botanic Gardens Sydney (02) 231 8182 or John Morris (02) 810 2565.

PEARL BEACH. Holiday house to let. Delightful 3 bedroom cottage with deck in lovely secluded garden setting, one minute from beach. Gas heating. Available for short lets May-September. Inquiries (02) 818 1108.

PORTRAIT AND HOUSE Commissions done drawing or painting can show examples reasonable prices telephone Vivien (02) 489 6825.

PROTECT YOUR ANTIQUES and valuables with a Chubb Electronic Security System from Chubb Home Protection telephone Alain Lamberty (02) 642 6791.

WANTED period display cabinet Victorian Edwardian also brass fire fender private (02) 951 377.

LAND TAX. Please send details of your burden to Land Tax Payers' Association of N.S.W. PO Box 81 Queen Victoria Building Sydney 2000.

KARMAN GRECH DESIGNS

Specialising in:

Restorations - Handprinted
Fabric and Wallcoverings
Free Quotes

Telephone: 597 5430

NATIONAL TRUST MARKETPLACE

TRUST US to deliver your sales message to our 33,000 members for as little as \$10, (\$1 per word 10-word minimum).

• Deadline: 6 weeks before the publication date of the Magazine. • The National Trust reserves the right to refuse ads. • Ad copy is subject to editing. The National Trust is not responsible for the contents. • If a post office box is given in ad, advertiser must provide a phone number for verification. • No forward mail. • All ads pre-paid, payable to The National Trust of Australia (NSW). • Call Jerry Grover (02) 438-3466 for more information, or mail ad and cheque to: c/- Grover Frost Pty Ltd, P.O. Box 1324, Crows Nest, NSW 2065.

To: **National Trust Marketplace**

C/- Grover Frost Pty Ltd
PO Box 1324
CROWS NEST NSW 2065

My ad is words @ \$1 per word (10-word minimum).

I wish my ad to appear in the following issue(s)

Payment enclosed: \$

COPY TO APPEAR IN MAGAZINE

Write one word in each space. Phone numbers and postal boxes count as two words. Abbreviations count as one word. To fit extra copy, use another sheet of paper.

Name

Signature

Address

Telephone (for verification) (Home) (Work)

Rustic Restorations

Interior Woodwork stripping & re-finishing. Specialising in Georgian, Victorian and Federation Homes
Phone: (049) 67 5818

This business is currently offering restoration services in the N.S.W. area.

Because of public awareness we are offering sympathetic restoration along traditional lines.

There are various means of reviving & stripping of interior woodwork.

The finishes used are:

1. Shellac
2. Wax
3. Oil based varnish

Should stripping be required, due to heavily painted woodwork, the following method is used:

1. Hot air gun
2. Scraping
3. Methol-chlorine based strippers

All work is hand-done on the premises.

Should you require further information, do not hesitate to contact the above number.



ADDITIONS-IN-STYLE

It costs no more to make your building additions, alterations or renovations sympathetic to the original architectural style

- VICTORIAN
- EDWARDIAN
- 1930's
- FEDERATION
- BUNGALOW
- or CONTEMPORARY

We will help you to achieve excellence and value with our professional advice, designs, drawings and specifications. Metropolitan or country areas.

Call us obligation free on **(02) 487 2883**

**ROBERT M. SIMPSON
PTY. LTD.
ARCHITECTS**



Highest quality genuine solid teak

Superbly hand crafted furniture in genuine solid teak, using the original methods of construction. Due to its enormous strength and stability, teak is a highly valuable timber, resistant to rot and weather extremes. Teak is regarded as without equal for use in outdoor furniture.

Classic tennis court seats, poolside loungers, Steamer recliners and the Italian parasols plus a traditional

range of seats in various styles and lengths from an armchair to a 2.4m (8ft) bench.

Available in all State Capitals and main country centres.

Cotswold Garden Furniture
Head Office 61 Boundary Street,
Roseville NSW 2069

Telephone **(02) 406 4532** for a range brochure and where-to-view ask for John or Val Jessop.

The Rocks

Start off in the **right** direction.



Call at **The Rocks Visitors Centre**
104 George Street 274972

SOPWITH CAMEL Propellor (8' 3" long)

Limited Edition
Individually numbered 1 to 100

Handcrafted French
Polished Mahogany to
original specification

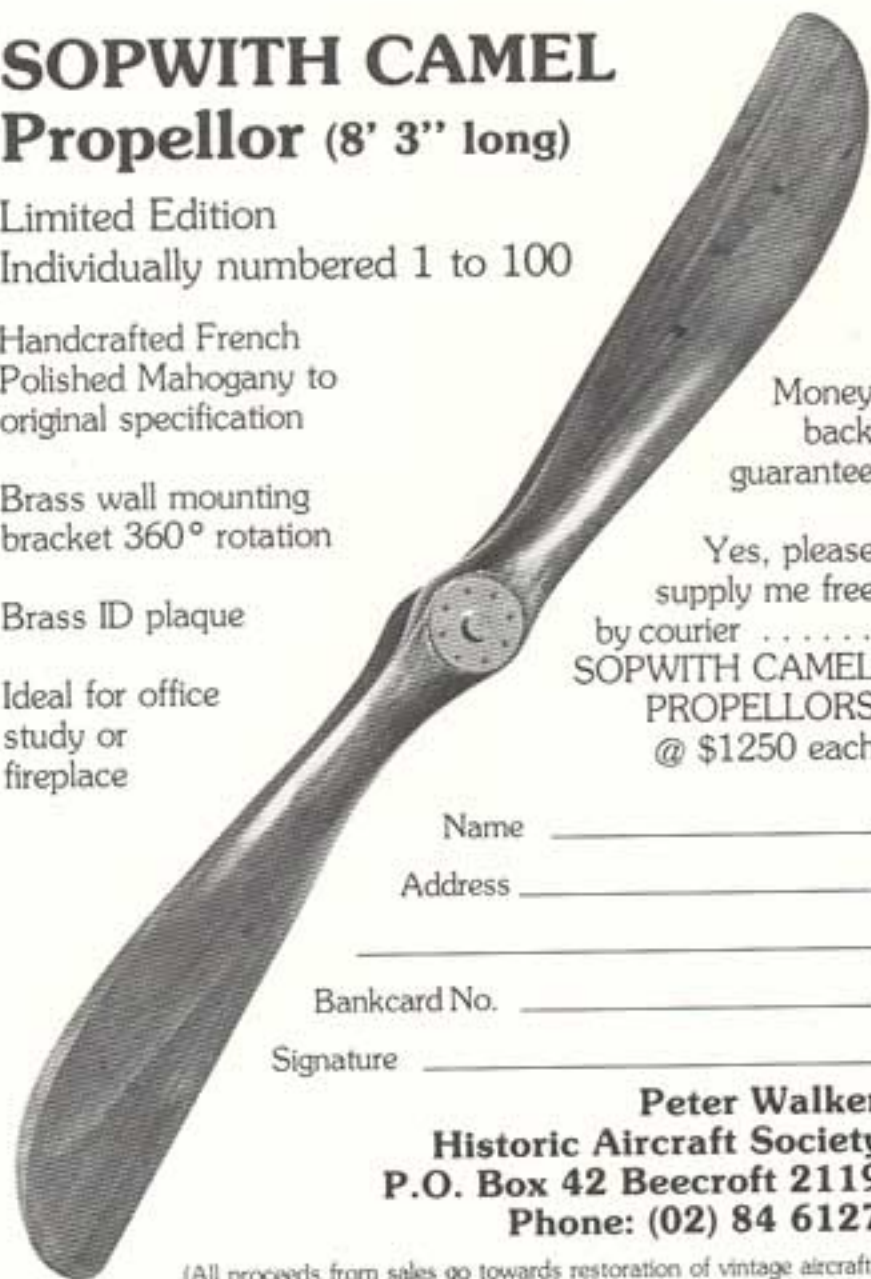
Brass wall mounting
bracket 360° rotation

Brass ID plaque

Ideal for office
study or
fireplace

Money
back
guarantee

Yes, please
supply me free
by courier
**SOPWITH CAMEL
PROPELLORS**
@ \$1250 each



Name _____

Address _____

Bankcard No. _____

Signature _____

Peter Walker
Historic Aircraft Society
P.O. Box 42 Beecroft 2119
Phone: (02) 84 6127

(All proceeds from sales go towards restoration of vintage aircraft).



Because the eye can deceive the palate, we taste our Cognac in a blue glass.

The making of Cognac is not a skill, it is an art.

As with the painter who blends his colours, so too the Cognac maker, by tasting, will blend his brandies.

At the house of Camus, tradition demands that tasting and blending can only be done by immediate members of the Camus family.

For the secret skills of this fine art have been passed on for more than a century from one generation to another.

Brandies from the various districts of the Cognac region are matured in separate casks.

In this way we enable them to attain their individual characteristics.

Using a working glass in the shape of a tulip, tinted blue

so we cannot be subconsciously influenced by colour, we taste these brandies over many years.

First of all, with the nose we perceive the bouquet of the brandy, its finesse and depth. And its robustness.

Then, with the palate, we search for its blandness and mellowness and roundness.

When we have judged the brandies to be at their best, they are ready to be blended.

We may combine all the finesse of a brandy from the Grand Champagne region with the bouquet of a brandy from the Borderies.

Or compensate the mildness of a brandy from Petit Champagne with a full-bodied brandy from Fins Bois.

The blend is then matured

further. Years pass. The marriage of the brandies is successful and Camus Cognac is then ready to leave the family and go into the world, a fine ambassador of French prestige.

How many years since the day when a colourless, fiery and aggressive brandy slowly trickled from the still? Ten, twenty-five, fifty years. Perhaps more.

If you would like to buy a set of six Camus blue snifter glasses for your own tasting, you may do so by sending a cheque or a money order for \$19.95 to this address:
Camus Cognac,
321 Pacific Hwy,
Crows Nest,
NSW, 2065.



A THING OF BEAUTY IS A JOY FOREVER (And a smart investment)



The Aronson Family, over a period of one hundred and four years (spanning four generations) has established a unique family tradition of dealing in the field of fine arts, specialising in fine antiques and oriental carpets.

Aronson Antiques are leaders in the field of fine Continental 18th and 19th century furniture and objets d'art, encompassing both strains of French design: provincial and city, as well as specialised dealing in oriental ceramics and bronzes.

The fine range of objets d'art include such difficult to find items as crystal, bronze and carved timber chandeliers,



The most comprehensive range of French furniture cannot be compared in Australia.

Aronson Antiques specialize in pieces most difficult to find including: commodes bureaux, plat, large and small vitrines, full salon suites, bergeres, fauteuils, secretaires, salon and sofa tables, extension dining tables, sets of 4 to 12 dining chairs, sideboards, cardtables, etc. Whilst periods covered are Louis XV, Louis XVI, Directoire, Empire, Restoration, Louis

Philippe and Napoleon III,

fine gilt and carved mirrors, French fireplaces in a variety of elegant and exotic marbles, superb French bronze sculptures from miniature to exhibition pieces, German and French porcelains such as Meissen, Sevres, Vienna, etc., a large range of mantle, wall and table clocks in ormolu, marble, Sevres, carved timber, bronze, etc., Continental and Sterling silver (tea & coffee services, flatware, trays, etc.).

The specialised section on Oriental ceramics and bronzes, displays porcelain of the Ming Dynasty (14th century) to the end of the reign of Emperor Kien Lung (1735-95), whilst the fine range of bronzes originate from China, Thailand and Cambodia.

fine pieces can be found in walnut, oak, mahogany, kingwood and brazilian rosewood, often with marquetry or parquetry inlay, ormolu (gilt bronze) mounts and with elegant marble.



Afghan, Belouch, Kayseri Prayer Rugs, natural coloured Gabbeh and Kodrang carpets and rugs, Belouch pillows, donkey bags, jawahls, tent strips and entrances, etc., etc.

For the connoisseur, the range of fine and rare investment pieces, is most comprehensive. Exotic signed pieces of court weavers, pure silk Kashan and Qum zaronims, dozars and carpets in opulent colours, silk inlaid. Nains in sizes from 2' (60 cm) round up to 12' x 8' (360 x 250 cm), silk warp

Isfahans, silk inlaid Tabriz's, rare silk Herekes, antique Teheran, pair Kashan panjrang carpets, the list goes on and on.

For the "down to earth" decorator who is after a functional and attractive floor covering, Frank's Persian Carpets have a selection which must be inspected. All sizes in all price ranges, but remember that we guarantee all our stock, so the real "cheapies" are not available at Frank's.

In the subsidiary business of Frank's Persian Carpets, the Aronson Family deal exclusively in hand-knotted Iranian, Afghan, Turkish, Indian, Pakistani, and Romanian rugs, carpets and runners.

With over two thousand pieces in stock, the enormity of the range has to be seen to be believed. Sizes vary from 1' x 1' (30 x 30 cm) up to 18'6" x 12'3" (565 x 375 cm) and of course include runners up to 22' (670 cm) long. Also in stock are those difficult to find square rugs and carpets. Of special interest is the selection of nomadic pieces which include Shiraz and Soumak Kelims,



To buy antiques or oriental carpets takes no more than a little time, a little money and a lot of know-how. To buy an imitation or fake takes only money.

If you have the time to talk about antiques or oriental carpets, come and talk to us. We have the know-how, we have the antiques and carpets, and talking to us about our favourite subject will cost you nothing at all.

ARONSON ANTIQUES est. 1883
FRANK'S PERSIAN CARPETS
317 Pacific Highway, Crows Nest, NSW 2065
Phone (02) 922 3610 922 3608
Monday-Saturday 8.45am to 4.45pm