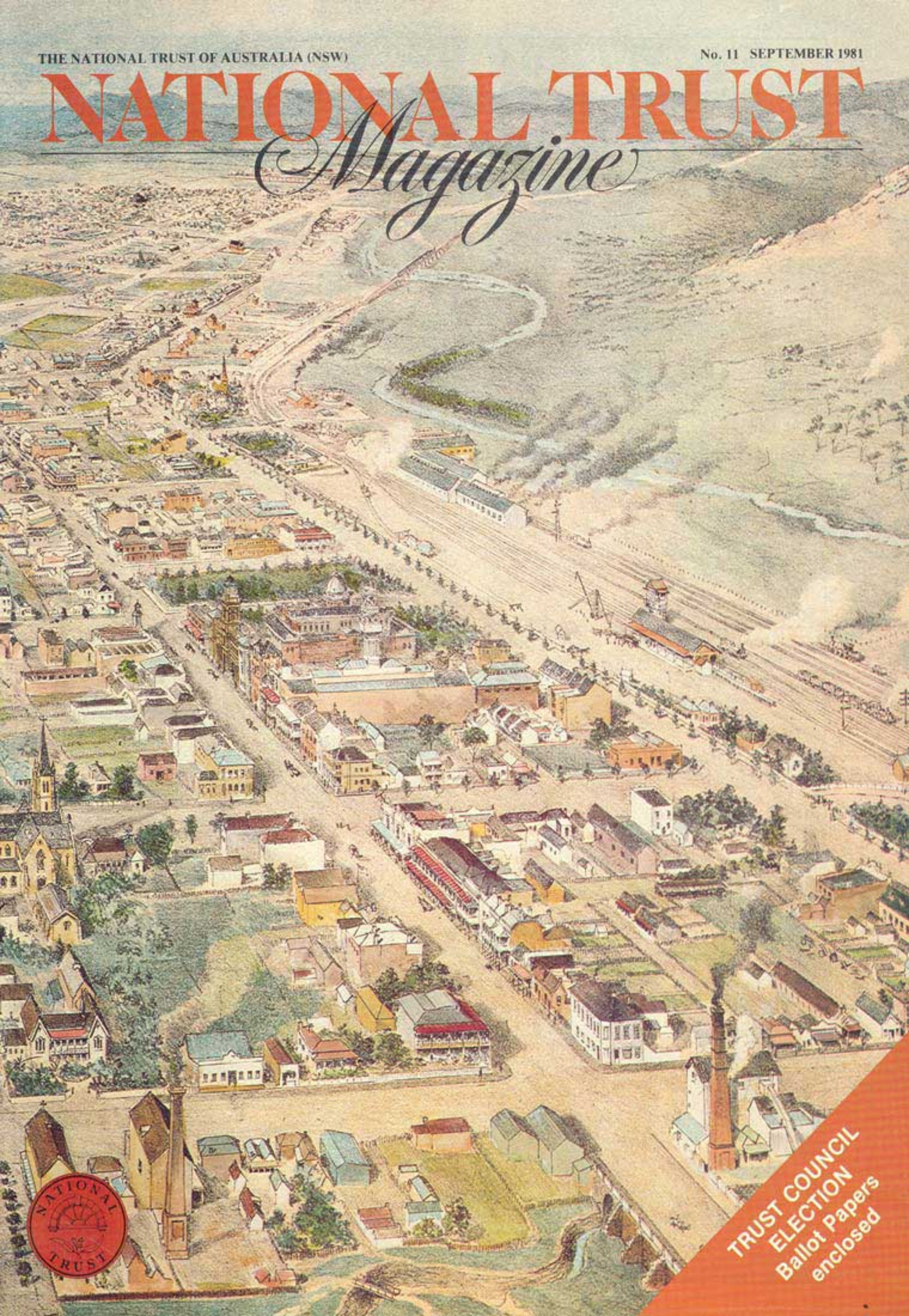


THE NATIONAL TRUST OF AUSTRALIA (NSW)

No. 11 SEPTEMBER 1981

NATIONAL TRUST

Magazine



**TRUST COUNCIL
ELECTION**
Ballot papers
enclosed

The National Trust of Australia (NSW) is a community organisation which seeks to conserve Australia's heritage of architecture and natural beauty. Membership is open to everyone. Annual subscription rates: Ordinary Membership \$16; Household Membership \$24; Student Membership \$8; Pensioner Membership \$8. All inquiries, telephone (02) 27-5374.

COVER

The City of Goulburn

Detail from an 1888 view of Goulburn in the National Trust collection.

IN THIS ISSUE

Editorial: Conservation: an election issue	Page 2
Trust Council Elections	2
Aberglasslyn for sale	3
Recycling old buildings	5
Exploring the Hunter Valley	6
The Burra Charter	9
The Great North Road	12
Gallery News	14
New Trust publications	15
The Glebe Estate	16
"Things to See and Do"	17
New Trust Educational Kit	18
Annual General Meeting	18
National Trust Tours	19
National Trust Real Estate Service	22
Young Trust Activities	23
Women's Committee Activities	27
Committee Activities - Ticket Application Forms	29

COMING EVENTS

SEPTEMBER

Saturday 19 -
Sunday 20
Wednesday 23
Saturday 26 -
Sunday 27

OCTOBER

Thursday 1
Saturday 3

Saturday 3 -
Monday 5

Wednesday 7

Sunday 11

Tuesday 13

Sunday 18

Sunday 18

Sunday 25

NOVEMBER

Tuesday 3

Wednesday 4

Friday 6

Saturday 7

Saturday 7 -

Sunday 8

Saturday 7 -

Sunday 8

Tuesday 10

Friday 13

Wednesday 18

Saturday 21

Sunday 29

DECEMBER

Saturday 5

Spring in the Wolgan Valley (Young Trust), Page 23

Garden Day in Darling Point (Garden Committee), Page 21

Camden Park Open Weekend (Camden Park Preservation Committee),
Page 28

Gallery Preview (Friends of the S. H. Ervin Gallery), Page 23

New exhibition: Australian Watercolour Institute Annual Selling Exhibition,
National Trust Centre, Page 14

Southern Highlands (Young Trust), Page 24

Wirrimbirra Coach Tour (Landscape Conservation Committee), Page 19

Young Trust Cottage Open Day (Young Trust), Page 24

A Day on the Upper North Shore (Women's Committee), Page 27

The Auctioning of Antiques (Young Trust), Page 24

Steam's Up. All Aboard! (Young Trust), Page 24

National Trust Annual General Meeting, Goulburn, Page 18

The Barrier Reef: Public Meeting and Film Evening, Page 21

Young Trust Annual General Meeting, Page 24

Candlelight Evening at Old Government House (Old Government House
Committee), Page 21

David G. Stead Memorial Wildlife Research Foundation Annual General
Meeting, Page 19

Warragamba to Wombeyan (Young Trust), Page 24

Hidden Gardens of Orange (Central West Women's Committee), Page 28

Hunters Hill Day (Women's Committee), Page 27

In the Spirit of the Mississippi River Boats (Young Trust), Page 24

Sydney Maritime Museum: Inspection and Supper Night (Young Trust),
Page 26

County Fair (Southern Tablelands Regional Committee), Page 28

Pittwater Cruising (Young Trust), Page 26

Young Trust Christmas (Young Trust), Page 26

Conservation: an election issue

It's quite probable, in the forthcoming State election campaign, that the Premier and his Government will seek votes on the strength of their efforts to conserve the environmental heritage of New South Wales.

They will be able to present a case which, on many counts, sounds impressive. In its first term, this Government introduced and implemented the NSW Heritage Act (1977) which gave the Minister for Planning and Environment powers to prevent the destruction of privately and publicly owned heritage property, and established a statutory body, the Heritage Council, to advise him on these matters.

More recently, the Government introduced the Environmental Planning and Assessment Act (1979). This established procedures that ensure the Government learns in advance of the environmental impact of proposed development, so that appropriate conditions can be applied.

The Government can take credit for legislating to protect the environment, and for a large number of policy decisions which support the contention that this is an environment-conscious administration. It has, for example, distributed funds for a wide range of restoration projects; it has sensitively restored a number of its own public buildings, most notably Sydney's extremely important Hyde Park Barracks; it has established more than 1 million hectares of National Park. This however, is not the whole story.

In many recent instances, the Government in its own dealings has chosen to ignore the underlying principles of its own legislation. It has, in fact, failed to impose upon itself the same restraints that it seeks to impose on the private sector. It has been responsible for some of the most destructive acts on the State's heritage.

Heritage Council's advice

One example is the Cumberland Stadium issue. Parramatta Park is public property vested in the NSW Government, under the responsibility of the Minister for Lands. In view of the environmental threat posed by the proposed stadium, the Heritage Council on several occasions advised the Minister for Planning and Environment to place a Conservation Order on this historic open space, but he declined. Despite protests from the National Trust, other concerned organisations and a large part of the community, and despite contrary advice from several of its own departments and agencies, the Government accepted the vote-catching Parramatta Leagues Club proposal without holding an open inquiry.

The former Treasury Building in Macquarie Street, Sydney, is another government-owned site where the Government appears to be steaming full-speed ahead on a development proposal, despite advice to the contrary. Here the Heritage Council, the Trust, the Royal Australian Institute of Architects and others have objected to the planned hotel tower block project which will annexe the small historic building as part of the hotel complex.

Controversy also surrounds the Rural Bank, a State-owned building in Sydney's Martin Place. The Bank and its neighbour TAA plan to build a highrise office block on their combined sites. The Heritage Council at first advised the Minister to consider this building an item of the State's environmental heritage which should be protected as a fine example of 20th Century architecture and as part of the Martin Place precinct which is sympathetic in scale and form with other buildings in the streetscape.

At a subsequent meeting held by the Heritage Council, which includes a significant number of senior public servants and ministerial appointees, somewhat surprisingly voted to rescind its earlier advice. At this second meeting there was no discussion of the heritage value of the Rural Bank or its surroundings; there was only discussion on fresh evidence of the financial

importance of the proposed development to the two present occupants of the site. In the Trust's view, the Heritage Council's rescission of its earlier advice was abysmal.

In directing attention to these aspects of the Government's performance, the Trust is not seeking to enter the party political arena. The present Government has made some very positive contributions to heritage conservation; the Opposition, on the other hand, has not demonstrated that it could manage the State's heritage any more effectively than the Government has.

Nor does the Trust wish to appear negative in its approach to conservation, "knocking" government at any opportunity. The Trust pursues its objectives in a number of ways: managing properties, providing technical information and educational services, submitting evidence to environmental inquiries and otherwise assisting government agencies, at all levels of government, in their efforts to protect and enhance the environmental heritage.

In commenting on the Government's management of the National Estate in New South Wales, the Trust hopes this important government activity will be discussed and debated fully during the election campaign.

Important Notice to Members

The Trust Council election

Out of 27,000 members, only 1,100 voted in last year's Trust Council election. When members were asked why they did not vote, the answer was usually the same: "I didn't know enough about the candidates and, anyway, the Trust is doing well."

These answers are no longer good enough. The National Trust owns and maintains more than thirty properties which, with their contents, are conservatively valued at \$7 million and it has an annual cash flow of \$2 million. This vast undertaking must be controlled by people with special qualifications and experience.

The Council of the Trust has suggested that I, as your President, should help you to have a better knowledge of those standing for Council this year.

Of the fifteen members elected to the Council for 1980/81 only twelve members are offering themselves for re-election. Three of the people offering themselves for election, who are not presently members of the Council, have particular qualifications which are vitally needed on the Trust Council and I commend them to you.

Mr. Ian Rae, a Chartered Accountant who has been Acting Honorary Treasurer for the past twelve months and is also Chairman of the Finance Committee, has all the knowledge required to administer and take care of the Trust's finances; Mr. Bain watches over our investment portfolio and advises us on its management and Mr. Serventy would be one of the most widely experienced people in the field of nature and landscape conservation.

Please read carefully the qualifications of each candidate on the sheet enclosed with this Magazine and, with the extra information I have given you, I hope you will vote and elect the Council that will represent every facet of our activities, thus making the Trust a strong body to represent its members in New South Wales.

Cherry Jackaman
PRESIDENT.



A carefully restored staircase at Aberglasslyn.

Aberglasslyn for sale

Aberglasslyn, one of Australia's finest Regency mansions, is for sale.

Sited on a rise close to the Hunter River near Maitland, and still commanding open views of the river and pastoral landscape, Aberglasslyn is believed to have been designed by John Verge and built between 1840 and 1842.

Verge (1782-1861) was arguably the most talented architect practising in Sydney in the 1830's. His other works still standing include Elizabeth Bay House and Camden Park.

A two-storey building in Ravensfield sandstone, Aberglasslyn contains seventeen rooms, including six bedrooms, plus a cellar. The property will be auctioned by L. J. Hooker Ltd. in association with L. J. Hooker, Maitland, and the National Trust Real Estate Service, in Sydney on October 13. For further details see Page 23 of this Magazine.

James Broadbent, an architectural historian and member of the Trust's Historic Buildings Committee, has written of this historic house: "There is, at Aberglasslyn, a sense of theatre, a delight in spatial and atmospheric contrasts as one moves from room to room."

"After the cool serenity of the entrance hall comes the light-filled exuberance of the drawing room, the easy elegance of the bay-windowed breakfast room then the arched transverse hall, dark but lit at its centre, at the foot of the

stair, by light from the rear vestibule and from the sultry dome above."

When the present owners purchased the house in 1976, it had been un-lived in for decades and was in an advanced state of decay. Windows were bricked up, the slate roof was in a parlous state and the floors, weakened by termites, were supported on props.

"Through the skill of Stan Hellyer, one of the most experienced builders working in the restoration field in New South Wales, the renewal of joists and bearers and the insertion of steel beams where necessary was accomplished with remarkably little interruption to the rest of the fabric or its finishes.

"The skill with which the structural work was undertaken has been matched by the meticulous attention to detail in the restoration of the details and surface finishes.

While the restoration of Aberglasslyn is not yet completed, the hardest work including the unseen structural repairs is finished, as is the restoration of the principal suite of rooms with their stunning detailing.

The challenge in restoring the rest of the house, in Mr. Broadbent's view, is not so much in the work involved, but in maintaining the standard set by the present owners who have saved and are now selling this important property.

Trust starts test case

The Trust has started legal proceedings against the Minister for Planning and Environment in order to test a provision of the Environmental Planning and Assessment Act.

The test case involves the proposed high rise hotel project on the site of the former Treasury Building in Macquarie Street, Sydney.

This Act controls, or at least guides, all planning matters in New South Wales. It includes statutory procedures for the consideration and approval of applications for development projects.

The Trust is concerned at the Minister's extremely narrow interpretation of the rights to object to proposed developments under Section 101 of the Act.

This Section gives the Minister power to "call in" any Development Application, for any site in NSW, so the matter can be determined by him or his Department regardless of the wishes of the relevant local government authority or the general public.

Under Section 101, people or organisations classed as objectors, if they are dissatisfied with the Minister's decision, are entitled to request a public inquiry at which any interested member of the

public or concerned organisation can give evidence and be heard.

The Minister, however, has refused to recognise as an objector anyone other than the relevant local government authority or the applicant seeking development approval.

The Trust considers that in all cases, and particularly in major developments having a substantial environmental impact, the legislation was intended to allow public participation.

At the time he introduced the legislation, the then Minister, Mr. Paul Landa, MLC, was reported as saying the Act heralded a "new deal" for the public in the planning process by providing unprecedented opportunities for public participation.

Having lodged an objection under Section 101, the Trust has asked the present Minister to hold a public inquiry into the highrise hotel proposal. As the Minister has refused, the Trust has instituted proceedings against him in the Land and Environment Court to establish the Trust's rights as an objector.

The Trust's objections to the hotel proposal have been fully reported in previous issues of the *Trust Magazine*.

Concern for The Rocks area

The Trust believes that local residents and interested conservation organisations should have the opportunity to assess and comment upon town planning proposals for Sydney's historic Rocks area.

The Sydney Cove Redevelopment Authority is currently not subject to the provisions of the Environmental Planning and Assessment Act, and residents of The Rocks are virtually disenfranchised as they have no opportunity to comment on developments proposed for their own area.

The Trust considers that planning for the area should be carried out under and in accordance with the provisions of the Environmental Planning and Assessment Act, as

this would allow the community and interested organisations to participate in the planning process.

The latest dispute over proposed development in The Rocks involves a group of Victorian terraces in Cumberland Street. These terraces were saved from demolition two years ago by an Interim Conservation Order at the instance of the former Minister for Planning and Environment, Mr. Landa.

This conservation order has now expired, and the SCRA wants to redevelop the site. It has been reported that the SCRA does not consider the Cumberland Street properties to be of architectural or historical significance. However, the Trust has made its position clear: These terraces are classified and should be restored to maintain the character of the area.



Cumberland Street terraces.

Conference

The Geographical Society of NSW is organizing a conference for October 17 on The Future of our Past; The Preservation of our Cultural Heritage. The fee will be \$30. Applications and enquiries to:

Dr. Graeme Aplin,
School of Earth Sciences,
Macquarie University,
North Ryde, NSW 2113
Phone: (02) 88-9525 OR
(02) 487-1839

Young Trust cottage

The Trust has received a grant of \$5,000 from the Department of Environment and Planning to help restore the messenger's cottage on Observatory Hill, near Fort Street Primary School.

Two years ago the Trust acquired the lease of this cottage, which was built in 1862 to house the messenger to the Sydney Observatory. It is now being renovated by the Young Trust, and they will be holding an open day at the cottage on Sunday, October 11 from 2 p.m. to 4 p.m. (See Page 24). The restoration work is costing the Young Trust more than \$30,000.

Other restoration projects to receive grants include St. Stephen's Anglican Church, Newtown (up to \$95,000), St. Andrew's Congregational Church, Balmain (up to \$55,000).

Newcastle competition

A competition for the landscape and urban design of the Newcastle Harbour foreshore has been announced by Newcastle City Council.

This competition is for the design of parks and public spaces along two kilometres of the historic Newcastle Harbour foreshore. It offers a significant challenge of an unusual scale to architects, urban designers and landscape architects.

Prizes of \$12,000, \$7,000 and \$3,000 will be awarded and the winning entrant will be retained by Newcastle Council to design and document works within a Stage 1 area.

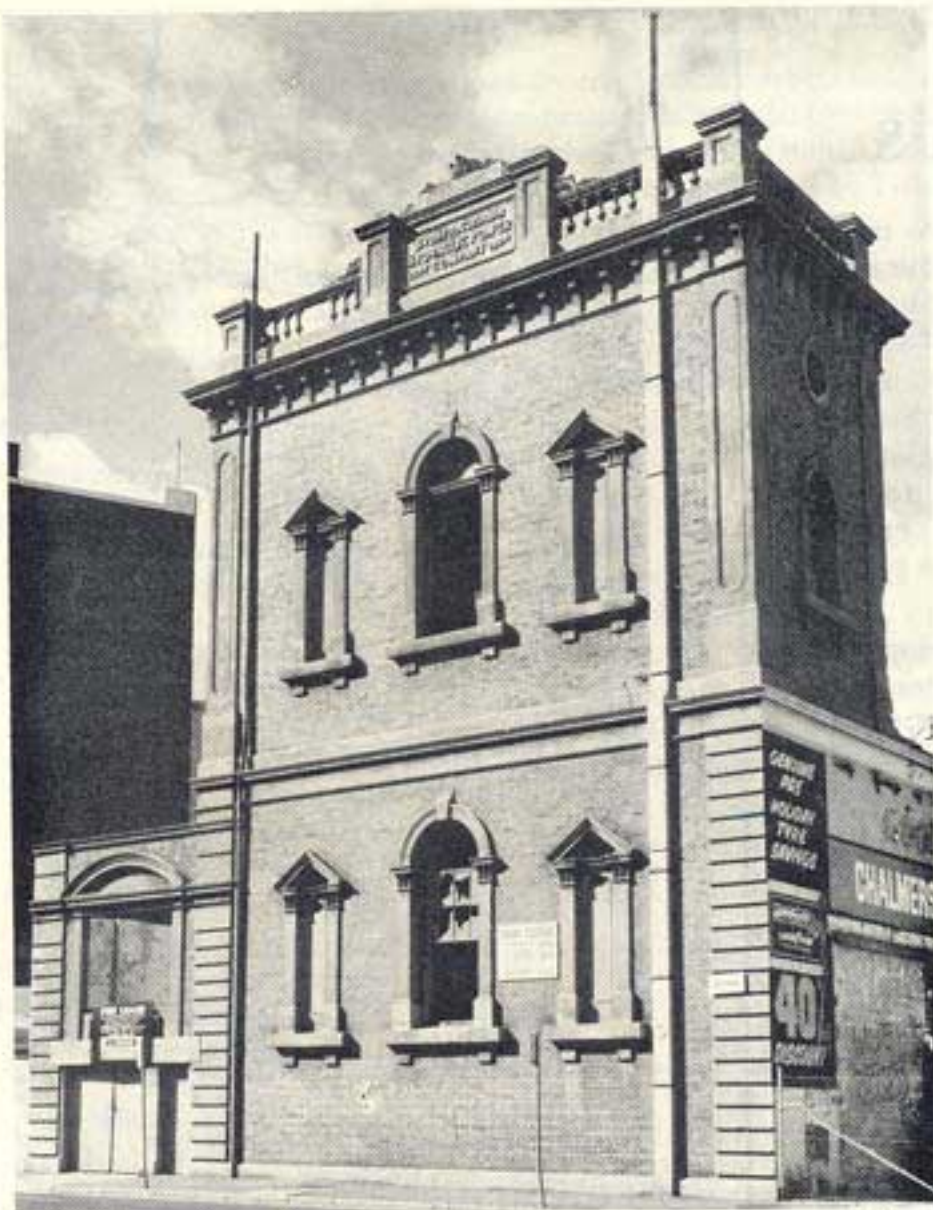
Applications for competition conditions should be made to The Promoter, The Newcastle Harbour Foreshore Development Competition, Newcastle City Council, King Street, Newcastle, 2300. Entries close on November 2, 1981.

Lecture by US expert

Lawrence Halprin, noted landscape architect and environmental planner from the USA, will hold a public lecture in Sydney on Friday, November 13. This will be followed by a seminar on Saturday, November 14, at which developments on Sydney Harbour and at Parramatta will be discussed.

Well-known for his many schemes for urban re-developments, particularly on waterfronts, Mr. Halprin has been appointed as an assessor for the Newcastle Harbour Foreshore Development Competition (see News item in this Magazine).

Further details of Lawrence Halprin's Sydney lecture will be advertised in the Sydney Morning Herald early in November.



New life for Sydney's hydraulic pumphouse.

Photo: Keith Gillett.

Recycling old buildings

The old Sydney Hydraulic Power Company building in Pier Street is to be "recycled" as two restaurants.

This structure is Sydney's only remaining hydraulic pumphouse and stands today as a monument to technological development in 19th Century Australia.

Late last century, before electricity powered Sydney, another source of energy was highly developed - water, under pressure. The Sydney and Suburban Hydraulic Power Company Limited established a network of three pumping stations that provided power across the city from Pyrmont to Woolloomooloo.

Water for the power stations was tapped from the city water supply. As the demand for power increased, a dam was constructed at Mt. Rennie, now the Moore Park Golf Course.

This water was then pumped through almost 32 km of pipes to operate all the wool presses, many of the wharf cranes, lifts and bank doors in Sydney. Until June 1975, the system was still in use operating lifts and doors in some 35 city buildings, including the Queen Victoria Building.

Built in 1890 as the Hydraulic Power Company's No. 1 Pumping Station, this 3-storey building had a significant role in the industrial

and commercial development of Sydney.

The structure still houses two enormous accumulator cylinders which were used to boost pressure along the water lines into the city. Its picturesque Italianate facade has strong visual links with other Haymarket buildings.

The old pumping station was almost demolished in 1979. However, the Trust campaigned for its preservation and the Heritage Council placed a conservation order on it. Now, with the permission of the Heritage Council, a new life has been found for this important old building.

This is further evidence that early buildings can be "recycled" to remain economically viable and in use. Another example is the Trust's own headquarters on Observatory Hill, originally a military hospital and then Fort Street School.

A number of other conversions of Sydney's buildings have been accomplished or are underway: Birkenhead Point's Dunlop Tyre Factory now houses shops and restaurants; Walter Burley Griffin's incinerator at Willoughby is a restaurant; a huge warehouse, Broughton House, in Kent Street has recently been converted for residential use; and a similar conversion is planned for the wool stores at Pyrmont.

Conservation order

A group of late 19th Century buildings in Newcastle's East End are to be protected by an Interim Conservation Order under the Heritage Act.

The terraces and a hotel adjoining them are in Church and Watt Streets, East Newcastle. The Church Street terrace is comprised of twelve houses and the adjoining Macquarie Hotel, which were built in brick in 1890-91 to the design of architect James Henderson. The Watt Street terrace of seven houses was built about the same time.

The action has been taken by the Department of Environment and Planning as the historic character of the buildings was threatened by proposed additions to the rear of the group.

The Schofield committee

The Trust Council has established a committee to review every aspect of the Trust's activities, the committee being under the Chairmanship of Councillor Mr. Leo Schofield.

The Trust has felt for some time that a complete review of the Trust's operations, aims and objectives should be undertaken and the committee has been meeting for over 12 months.

The first working papers are now being produced and market research has been undertaken to ascertain views of non-members to supplement the most successful survey conducted amongst members a few months ago.

Once the Trust Council has received and approved the reports of the committee summaries of them will be published for the information of members in the Trust Magazine.

Archaeology Conference

The Australian Society for Historical Archaeology is holding its First Annual Conference on Historical Archaeology on Thursday and Friday, October 29 and 30, at the National Trust Centre, Observatory Hill, Sydney.

Contributors to the conference will present reports on current research and excavations, and will also discuss the study of historical and industrial archaeology in the context of heritage conservation work. For further details, please contact The Honorary Secretary, Australian Society for Historical Archaeology, C/O Department of Archaeology, University of Sydney, NSW, 2006. Telephone (02) 692-2763.

A valley at the crossroads

The Trust calls on its members to take a good hard look at the Hunter Valley and consider the effects that the proposed massive resources boom will have on this scenic region of New South Wales.

The vital question is not whether the industrial expansion should occur, but how? And where? In planning for the boom, the Government must consider heritage conservation an essential part of progress.

It has been reported that development projects estimated to cost a staggering \$7,000 million are already committed or at the final feasibility stage. These will bring many thousands more people to the Hunter Region.

The Hunter Valley is not ready for such a rapid influx. Workers are already living permanently on caravan sites within and on the fringes of townships. In many places, roads are suitable only for light traffic.

The key to the whole boom is coal. Mines are spreading across the landscape, and one area that will be placed under particular stress with a concentration of mines will be the delightful rural landscape between Muswellbrook, Singleton and Denman. Many of the mines will be open-cut and the area will also accommodate Bayswater Power Station near Ravensworth and a coal liquefaction plant at West Muswellbrook.

Rich in history

The Hunter River winds through this peaceful triangle of countryside and its flats support a diversity of traditional agricultural pursuits

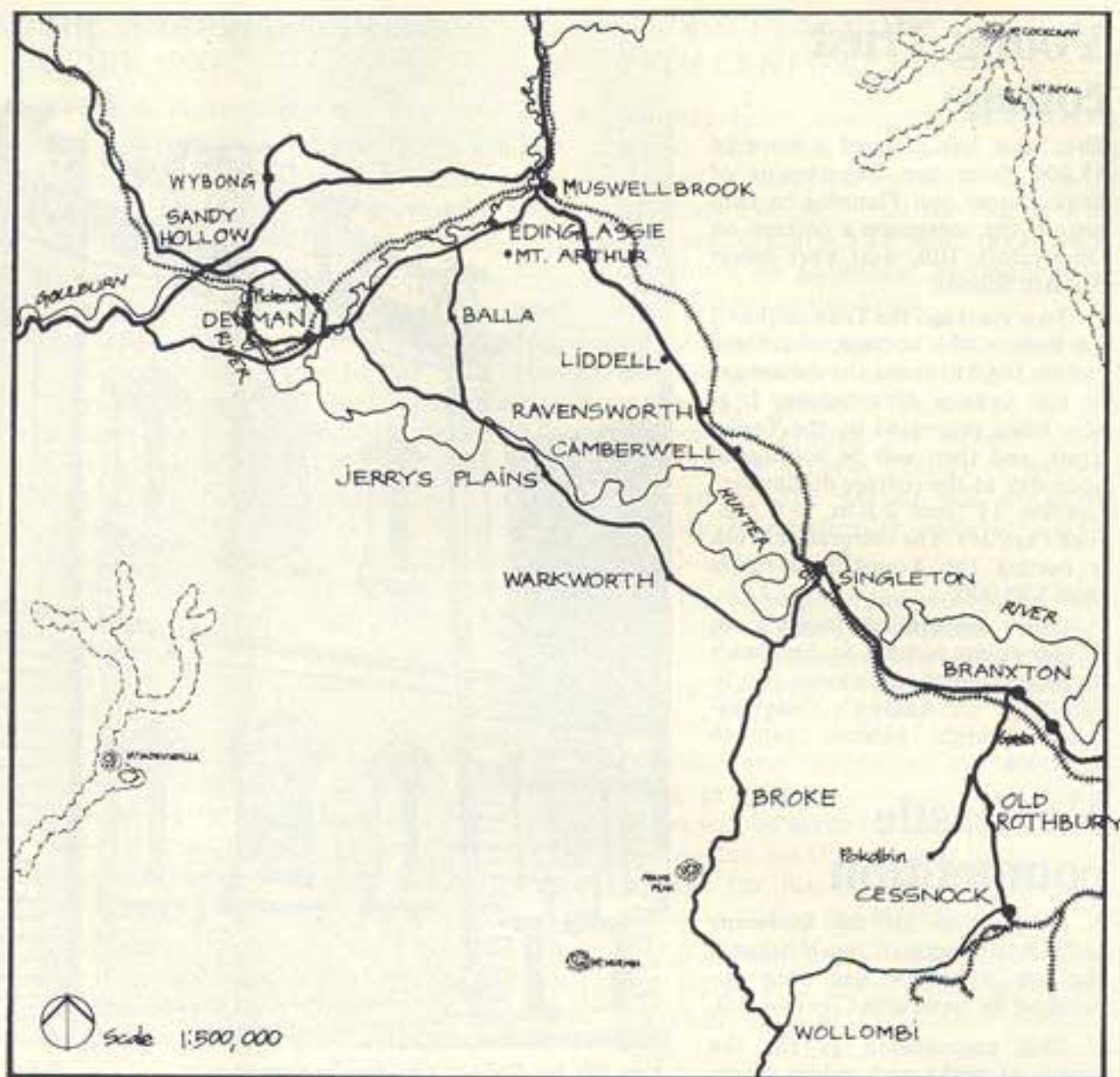
The observant motorist will catch a glimpse of pioneer homesteads, and only a brief stop at an isolated settlement, such as Jerry's Plains, will reveal several architectural treasures.

Roads and mines will scar the countryside. Prime agricultural land will be destroyed. The historic towns of Muswellbrook, Singleton and Denman will be under tremendous pressure to provide housing and community services. The 19th Century character of these towns, with their interesting streetscapes and historic buildings, are already under threat.

The Trust is most concerned that the cumulative effects of development in this area are evaluated, along with a thorough public assessment of the heritage value.

Priority is being given to the Hunter Region by the Trust's expert committees, and the Trust's viewpoint is being pressed with responsible public authorities at every opportunity.

The accompanying map and text will guide members through this historic and beautiful area.



Exploring the Hunter

In 1820 John Howe and his party of explorers blazed a trail across the wild mountain barrier dividing the Hawkesbury Valley from the Hunter district. They arrived at the present site of Singleton in March, and Howe named the extensive plain nearby, St. Patrick's Plains (now Patrick Plains). Howe wrote to Governor Macquarie: "We came through as fine a country as imagination can form . . . fine land fit for cultivation and equally so for grazing."

Howe and other members of the party soon applied for land grants. When news of the lush green pastures spread, other settlers braved the hazards of the track with bullock wagons and pack horses loaded with their possessions. By 1841 the population of Patrick Plains was almost 2700.

As settlement began to move west, Benjamin Singleton, a member of Howe's party built an inn on Patrick Plains to service travellers' needs. As delays were often caused by floods in the river, he also provided a punt. This was the beginning of Singleton.

To this day the town retains its 19th Century rural atmosphere. A pedestrian or motorist can still experience its mid-Victorian streetscapes of public buildings, churches, hotels and houses.

Singleton is a town of great heritage

value. The George Street Urban Conservation Area, classified by the Trust, encompasses most of the oldest part of the town. George Street, the historic main street, contains many fine 19th Century buildings: the Court House (1868); former Mechanics Institute (1866); the Anglican Church Group (from 1864); Ewbank (former Bank of NSW and residence, 1884); and the Calidonian Hotel (1853), reputedly the oldest local hotel still in use.

The Club House Hotel and the neighbour-

Continued, Page 7

**CLASSIC GARDEN
DESIGN
by
PETER WYBURD**

**INTEX DESIGN
& CONSTRUCTION**

63 Jersey Road,
Woollahra, N.S.W. 2025.

326 1557



Hunter Valley landscape near Singleton.

Photos: Paul Knox

The Hunter

From Page 6

ing Criterion Hotel contribute to the Victorian streetscape in John Street. One striking landmark, an indigenous Fig Tree at the corner of Queen and John Streets, was first mentioned in records in 1855, when a resident wrote of a flood which reached "around the roots of the big fig". It seems likely that this tree predates European settlement in the area.

The pavilions, grandstand and refreshment rooms at Singleton Showground form a fine group of High Victorian showground buildings. A theatrical atmosphere has been created using very modest materials — timber and iron, and simple vernacular forms. Unfortunately the group is badly in need of repair.

The back streets hold many surprises, such as Frome, a boom style Victorian villa, in Frome Close.

Jerry's Plains

From Singleton take the road to Warkworth, originally Cockfighter's Creek, which is located near mining development. The problems created here by coal dust and trucks indicate the likely fate of much of the Upper Hunter area.

Settlement at the next village, Jerry's Plains, began in the early 1820's. Proclaimed as a town in 1840, Jerry's Plains was Singleton's major rival before the railroad passed through Singleton in 1863. The town's public and church buildings testify to its early importance. The Anglican Church of St. James' (1875-79) on the main road (Pagan Street!) was built to the design of renowned architect, John Horbury Hunt.

Nearby is Arrowfield vineyards, one of the largest in Australia. Other important vineyards here include Rosemount Estate, Mt. Dangar and Hollydene.

The northern boundary of the Wollemi National Park runs close to the road between Jerry's Plains and Denman. Land near this boundary may be mined. The Trust believes this area is not only of high scenic value, but also provides an important buffer to the National Park. Any major development here should be carefully planned.

The service centre of this wealthy district is Denman, first settled in 1823 by Commander William Ogilvie and gazetted as a town in 1853. The main street, Ogilvie Street, complete with post-supported verandahs over the footpaths, has been classified by the Trust as an Urban Conservation Area. The Royal Hotel is a remarkable example of Federation period design, with tall palms rising in front.

The White family were pioneers in the Hunter Valley, and Denman's Anglican Church of St. Matthias was John Horbury Hunt's first White family commission. It was completed in 1875. The massiveness

of the roof's proportions are typical of Hunt.

Superb views of the town and farming land surrounding it can be seen from the Apex Lookout, 3 km from the town.

Pressures for housing are already apparent within Denman. Caravans are the permanent homes for many people, and over the last few years the price of a suburban-size block has risen dramatically.

It is well worth the drive out to a winery called Horder's Wybong Estate from Denman via Sandy Hollow to see some beautiful open woodland. River red gums, spotted gums, iron barks, peppermints and cypresses line the roadway, huge outcrops of rock punctuate the skyline, and the rich alluvial soils support lush growth. The Trust is concerned about the effects of the proposed 85,000 ml Wybong Creek Dam on this area.

The unfinished railway, which was to link Maryvale near Wellington in the central west and Sandy Hollow, can still be seen.

Edinglassie

The Denman-Muswellbrook road takes the traveller past rolling hills with several superb homesteads, including historic Edinglassie, in the foreground. Designed by Horbury Hunt for James White, the complex is beautifully situated alongside the Hunter River.

These rolling hills may become Mount Arthur North, the biggest open-cut mine in the southern hemisphere, producing 11 million tonnes of coal a year.

It is also proposed to shift the road closer to Edinglassie, and it will be filled with heavy rumbling coal trucks. The vibrations from this road, together with an upgraded railway carrying coal trains, will pose a serious threat to Edinglassie and another old home, Balmoral (c.1859), closer to Muswellbrook just past Ramrod Creek.

Continued, Page 9



Ewbank, a former bank and residence built in 1884, in George Street, Singleton.

讚採芹五十日
 四春秋斑
 剝青衿伴
 白頭可惜
 天心慳六
 載不教泮
 水賦重遊
 甲子仲冬
 孫詒謀題



*Memorable rooms
 are created by
 the timeless beauty,
 presence and quiet authority
 of a few unique pieces . . .*

... A selection of the very rare, including an ancestor scroll (one of a pair), is shown here. Back row, from left: Ching-pai ewer from Yuan Dynasty; fourteenth-century Northern Song (Yueh-type) mei-ping; Yuan blue-and-white stem cup; eighteenth-century Ting blanc de Chine; Ming blue-and-white bowl (Chia Ching c. 1522-26). Front row from left (all Yuan Dynasty): fourteenth-century under-glaze red jarlets; Ching-pai covered ewer; under-glaze copper red jarlets.

 **Taylors**
 CHIN HUA GALLERIES

Directors: K & N.M. Taylor

243 SUSSEX STREET, SYDNEY, NSW 2001
 TEL (02) 29 8479 CABLES 'CHIGAL' TELEX 23257

Gallery hours: 10am-5pm, Monday to Saturday



From Page 7

The origin of the name Muswellbrook is not definitely known. One suggestion is that early settlers called the district "Musclebrook" because many shellfish resembling mussels were found in a nearby creek. This name was recorded as early as 1827 and was used when the town was gazetted in 1833.

Dairyfarming, cream and milk processing plants, coal mining and the power generating industry have all influenced the town's development. Today Muswellbrook is both a coal mining town and the centre of an important pastoral and dairying area. Nearby are many well-known properties producing stud cattle, blood horses and merino sheep.

Development of the Bridge Street section mainly took place in the 1880's to early 1900's. There has been much unsympathetic alteration, but the Eatons Hotel group from 164 to 188 Bridge Street (classified by the Trust) is a magnificent legacy.

St. Alban's Church and its bellcote, at the corner of Brook Street and Hunter Terrace, is delightfully set amongst 19th Century plantings and surrounded by a Gothic picket fence. Hunter Terrace also contains a fine two-storey Victorian residence, Brighton Villa, at No. 12.

Open cut mines

From Muswellbrook take the New England Highway back to Singleton. Industrial development has already taken place as far as Camberwell, which has changed little over the years. Open-cut coal mines at Ravensworth show the huge impact of this extractive method on the environment.

The Liddell Power Station dominates the landscape for many kilometres around. Across the highway from the Liddell Station, the Bayswater Power Station is now under construction.

Aluminium smelters at Kurri Kurri, Tomago and Lochinvar will require huge amounts of power. Some of this will be supplied by the Bayswater Power Station which, it has been reported, will consume 7 million tonnes of coal a year — mainly to be extracted from new mines south of Ravensworth and from the gigantic Mt. Arthur North project.

Take the turn-off to Liddell State Coal Mine to see a forgotten relic of the mid-19th Century coach and horse traffic — the Chain of Ponds Hotel. Now owned by the Electricity Commission of NSW, this colonial Georgian complex once served the Morpeth to Liddell trade.

At Singleton the triangle is completed and hopefully the traveller will have a better idea of what conservation groups, such as the Trust, are concerned about. As many local people ask, "What's the hurry?" The Government must first carry out a thorough assessment of the heritage value of these fertile river flats — rich not only in farmland, but in history, architecture and beauty.

The Burra Charter

Until recently, architectural conservationists in Australia — particularly the professionals, including architects and builders — have had to work without an agreed set of guiding principles.

The most useful guidelines were those contained in the Venice Charter, a document prepared and adopted by the International Council on Monuments and Sites (ICOMOS) in the 1960's.

ICOMOS is a non-government organisation closely associated with UNESCO linking public authorities, departments, organisations and individuals concerned with the conservation and study of monuments and sites, but its Venice Charter was more relevant to European than Australian conditions.



Before restoration

Terrace housing in Forbes Street, Woolloomooloo, photographed by John Devenish. This is one of his winning entries in the "Restoration Series" section of the recent Sydney Morning Herald-National Trust Heritage Photographic Contest.

In 1979, after a year's preliminary drafting, the Australian Committee of ICOMOS met at Burra in South Australia and adopted on a 12-month trial basis a charter that relates directly to Australian experience.

The Burra Charter, as it became known, is now fully adopted and endorsed by the Australian Heritage Commission and most National Trusts in Australia, including New South Wales.

The Charter sets out a common language for conservation work (Article 1), general principles (2 to 10), the types of processes or approaches which are appropriate in each case (11 to 22) and acceptable practices in the planning, supervision and documenting of work (23 to 29).

The Burra Charter and its effects on conservation in Australia will be reviewed in 1985. For the interest of members, the Charter is reproduced below.

Copies of the Charter in pocket-size brochure form are available from The Secretary, Australia ICOMOS, c/ The National Trust of Australia (NSW), Observatory Hill, Sydney, NSW 2000, at 50c each, \$25 per hundred or \$200 per thousand (all prices include postage).

PREAMBLE

Having regard to the International Charter for the Conservation and Restoration of Monuments and Sites (Venice 1966), and the Resolutions of 5th General Assembly of ICOMOS (Moscow 1978), the following Charter has been adopted by Australia ICOMOS.

DEFINITIONS

ARTICLE 1. For the purpose of this Charter:

1.1 *Place* means site, area, building or other work, group of buildings or other works together with pertinent contents and surroundings.

Continued, Page 10

blaxland gallery
myer sydney

presents

*Art from
the
Collections*

OF THE
TRUSTEES OF
THE ART GALLERY OF N.S.W.

Included in the exhibition will be
a selection of important Australian
and European works of art
rarely exhibited.

14th to 29th October 1981.

MYER
CITY 6TH FLOOR.

Burra Charter

From Page 9

Place includes structures, ruins, archaeological sites and areas.

1.2 Cultural significance means aesthetic, historic, scientific or social value for past, present or future generations.

1.3 Fabric means all the physical material of the place.

1.4 Conservation means all the processes of looking after a place so as to retain its cultural significance. It includes maintenance and may according to circumstance include preservation, restoration, reconstruction and adaption and will be commonly a combination of more than one of these.

1.5 Maintenance means the continuous protective care of the fabric, contents and setting of a place, and is to be distinguished from repair. Repair involves restoration or reconstruction and it should be treated accordingly.

The distinctions referred to in Article 1.5, for example in relation to roof gutters, are:

- maintenance - regular inspection and cleaning of gutters*
- repair involving restoration - returning of dislodged gutters to their place*
- repair involving reconstruction - replacing decayed gutters.*

1.6 Preservation means maintaining the fabric of a place in its existing state and retarding deterioration.

1.7 Restoration means returning the EXISTING fabric of a place to a known earlier state by removing accretions or by reassembling existing components without the introduction of new material.

1.8 Reconstruction means returning a place as nearly as possible to a known earlier state and is distinguished by the introduction of materials (new or old) into the fabric. This is not to be confused with either re-creation or conjectural reconstruction which are outside the scope of this Charter.

1.9 Adaptation means modifying a place to suit proposed compatible uses.

1.10 Compatible use means a use which involves no change to the culturally significant fabric, changes which are substantially reversible, or changes which require a minimal impact.

CONSERVATION PRINCIPLES

ARTICLE 2. The aim of conservation is to retain or recover the cultural significance of a place and must include provision for its security, its maintenance and its future.

Conservation should not be undertaken unless adequate resources are available to ensure that the fabric is not left in a vulnerable state and that the cultural significance of the place is not impaired. However, it must be emphasised that the best conservation often involves the least work and can be inexpensive.

ARTICLE 3. Conservation is based on a respect for the existing fabric and should

involve the least possible physical intervention. It should not distort the evidence provided by the fabric.

The traces of additions, alterations and earlier treatments on the fabric of a place are evidence of its history and uses. Conservation action should tend to assist rather than to impede their interpretation.

ARTICLE 4. Conservation should make use of all the disciplines which can contribute to the study and safeguarding of a place. Techniques employed should be traditional but in some circumstances they may be modern ones for which a firm scientific basis exists and which have been supported by a body of experience.

ARTICLE 5. Conservation of a place should take into consideration all aspects of its cultural significance without unwarranted emphasis on any one at the expense of others.

ARTICLE 6. The conservation policy appropriate to a place must first be determined by an understanding of its cultural significance and its physical condition.

ARTICLE 7. The conservation policy will determine which uses are compatible.

ARTICLE 8. Conservation requires the maintenance of an appropriate visual setting, e.g. form, scale, colour, texture and materials. No new construction, demolition or modification which would adversely affect the settings should be allowed. Environmental intrusions which adversely affect appreciation or enjoyment of the place should be excluded.

Continued, Page 11

1982

NEW SOUTH WALES

WILDERNESS CALENDAR

BRILLIANT COLOUR PHOTOGRAPHY FROM THE STATE'S WILD PLACES

\$6.50

POSTED ANYWHERE IN THE WORLD



TO KALIANNA PRESS
P.O. Box 236 Chatswood NSW 2067

Please Forward _____ copies of the
1982 CALENDAR at \$6.50 each to:
(block letters)

Name

Address

Country

I enclosed \$ _____ in payment.



During restoration
Terrace housing in Woolloomooloo,
photographed by John Devenish.



After restoration.

Burra Charter

From Page 10

New construction work, including infill and additions, may be acceptable provided:
it does not reduce or obscure the cultural significance of the place
it is in keeping with Article 8

ARTICLE 9. A building or work should remain in its historical location. The moving of all or part of a building or work is unacceptable unless this is the sole means of ensuring its survival.

Some structures were designed to be readily removeable or already have a history of previous moves, e.g. prefabricated dwellings and poppet-heads. Provided such a structure does not have a strong association with its present site its removal may be considered.
If any structure is moved it should be moved to an appropriate setting and given an appropriate use. Such action should not be to the detriment of any place of cultural significance.

ARTICLE 10. The removal of contents which form part of the cultural significance of the place is unacceptable unless it is the sole means of ensuring their security and preservation. Such contents must be returned should changed circumstances make this practicable.

CONSERVATION PROCESSES

Preservation

ARTICLE 11. Preservation is appropriate where the existing state of the fabric itself constitutes evidence of specific cultural significance, or where insufficient evidence is available to allow other conservation processes to be carried out.

Preservation protects fabric without obscuring the evidence of its construction and use. The process should always be applied:
where the evidence of the fabric is of such significance that it must not be altered.
This is an unusual case and likely to be appropriate for archaeological remains of national importance
where insufficient investigation has been carried out to permit conservation policy decisions to be taken in accord with Articles 23 to 25.

New construction may be carried out in association with preservation when its purpose is the physical protection of the fabric and when it is consistent with Article 8.

ARTICLE 12. Preservation is limited to the protection, maintenance and where necessary, the stabilisation of the existing fabric but without the distortion of its cultural significance.

Stabilization is a process which helps keep fabric intact and in a fixed position. When carried out as a part of preservation work it does not introduce new materials into the fabric. However, when necessary for the survival of the fabric, stabilization may be effected as part of a reconstruction process and new materials introduced. For example, grouting or the insertion of a reinforcing rod in a masonry wall.

ARTICLE 13. Restoration is appropriate only if there is sufficient evidence of an earlier state of the fabric and only if returning the fabric to that state recovers the cultural significance of the place.
See explanatory Note for Article 2.

ARTICLE 14. Restoration should reveal anew culturally significant aspects of the place. It is based on respect for all the physical, documentary and other evidence and stops at the point where conjecture begins.

ARTICLE 15. Restoration is limited to the reassembling of displaced components or removal of accretions in accordance with Article 16.

ARTICLE 16. The contributions of all periods to the place must be respected. If a place includes the fabric of different periods, revealing the fabric of one period at the expense of another can only be justified when what is removed is of slight cultural significance and the fabric which is to be revealed is of much greater cultural significance.

Reconstruction

ARTICLE 17. Reconstruction is appropriate where a place is incomplete through damage or alteration and where it is necessary for its survival, or where it recovers the cultural significance of the place as a whole.

ARTICLE 18. Reconstruction is limited to the completion of a depleted entity and should not constitute the majority of the fabric of a place.

ARTICLE 19. Reconstruction is limited to the reproduction of fabric the form of which is known from physical and/or documentary evidence. It should be identifiable on close inspection as being new work.

Adaptation

ARTICLE 20. Adaptation is acceptable where the conservation of the place cannot otherwise be achieved, and where the adaptation does not substantially detract from its cultural significance.

ARTICLE 21. Adaptation must be limited to that which is essential to a use for the place determined in accordance with Articles 6 and 7.

ARTICLE 22. Fabric of cultural significance unavoidably removed in the process of adaptation must be kept safely to enable its future reinstatement.

CONSERVATION PRACTICE

ARTICLE 23. Work on a place must be preceded by professionally prepared studies of the physical, documentary and other evidence, and the existing fabric recorded before any disturbance of the place.

ARTICLE 24. Study of a place by any disturbance of the fabric or by archaeological excavation should be undertaken where necessary to provide data essential for decisions on the conservation of the place and/or to secure evidence about to be lost or made inaccessible through necessary conservation or other unavoidable action. Investigation of a place for any other reason which requires physical disturbance and which adds substantially to a scientific body of knowledge may be permitted, provided that it is consistent with the conservation policy for the place.

ARTICLE 25. A written statement of conservation policy must be professionally prepared setting out the cultural significance, physical condition and proposed conservation process together with justification and supporting evidence, including photographs, drawings and all appropriate samples.

ARTICLE 26. The organisation and individuals responsible for policy decisions must be named and specific responsibility taken for each such decision.

Continued, Page 12

Building a road to the north: dreams and toil

Grace Karskens, Historic Buildings Assistant for the Trust, is currently undertaking an historical archaeology study of the Great North Road for her Master of Arts (Archaeology) degree. Here she examines the significance of the road, a most ambitious project for the young Colony.

The Great North Road is a magnificent and unique item of Australia's heritage. Constructed between 1826 and 1836 to connect Sydney with the newly settled Hunter Valley, it stands as a memorial to convict labour.

Often referred to as the "garden of the colony", the Hunter Valley had many large estates and influential settlers. Communication was extremely difficult with this northerly settlement, the easiest route being by sea.

In its attempt to impose planned, permanent and impressive structures on the still wild and vast landscape of NSW, the government decided to construct a road to the north. This large public undertaking was perhaps the most ambitious of the three Great Roads to the north, south and west.

Built entirely by convict labour, the road ran between the Castle Hill turn-off from Windsor Road at Baulkham Hills, over diverse and often extremely rugged terrain to the Hunter Valley.

The road branched at both Wollombi and Broke to Wallis Plains (Maitland), Jerry's Plains (Whittingham) and to Warkworth, further north.

Although first surveyed in 1825 by order of Governor Brisbane, it was Governor

Continued, Page 13

BURRA CHARTER

From Page 11

ARTICLE 27. Appropriate professional direction and supervision must be maintained at all stages of the work and a log kept of new evidence and additional decisions recorded as in Article 25 above.

ARTICLE 28. The records required by Articles 23, 25, 26 and 27 should be placed in a permanent archive and made publicly available.

ARTICLE 29. The items referred to in Article 10 and Article 22 should be professionally catalogued and protected.

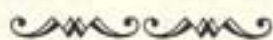
The explanatory notes printed in italics through the text do not form part of the Charter, and may be added to by Australia ICOMOS.

At long last . . .



OLD HOBART TOWN TODAY

Another photographic exploration by well-known Tasmanian photographer and author Frank Bolt



The fine romantic buildings of Old Hobart Town have for long been a subject of great interest to many Australians, but not until now was a comprehensive and authoritative book available which is a pleasant and educating experience to read. In this work, which took nearly five years to produce, Frank Bolt takes his readers on an exploration of the more interesting areas of the town, and the result will serve for many years to come as a superbly photographed and researched documentation of Old Hobart Town as it can still be found today.

All in all, a fine publication which will help us appreciate the heritage of early Hobart still around and about, a work which is destined to become a notable landmark in the growing knowledge of this second-oldest city of Australia.

OLD HOBART TOWN TODAY: 256 pp. with some 230 photographs printed in duotone on heavy art paper, bound in linen. The recommended retail price of this book is \$37.50, but early copies are available for the pre-publication price of \$31.95 incl. postage. The expected delivery date is late October, 1981.

Return the form below with your remittance to Waratah Publications Pty Ltd, P.O. Box 115, Kingston, Tasmania 7150

Please send me copies of OLD HOBART TOWN TODAY at the special pre-publication price of \$31.95 each. Payment for \$ has been enclosed.

Name

Address

Town and postal code

From Page 12

Ralph Darling who undertook the construction of the Great North Road on its grand scale. Darling was apparently fond of the concept of fine and all-encompassing roads. Surveyor-General Thomas Mitchell was later to write that Darling classed the three Great Roads "amongst the most important measures of his government".

Darling instigated the practice of employing the more unruly of convicts on the roads. With the high rate of transportation after the end of the Napoleonic Wars, this seemed to Darling and his contemporaries an excellent practice, since it provided a useful occupation for the otherwise unemployable surplus of convict labour. It was also an effective way of distancing these "undesirables" from society and a relatively cheap way to build roads for the growing colony.

According to the *Returns of the Colony* for 1830, each convict was employed on the roads at a cost of 10p per day or £12.8.4 annually. At that time there were 558 convicts working on the Great North Road, a third of the total of all convicts working on roads in the colony.

The convicts employed in the road gangs lived in extremely harsh conditions. During the period of the road's construction, they were accommodated in simple bark huts, tents and moveable wooden boxes. Not surprisingly, there were frequent complaints of extreme cold.

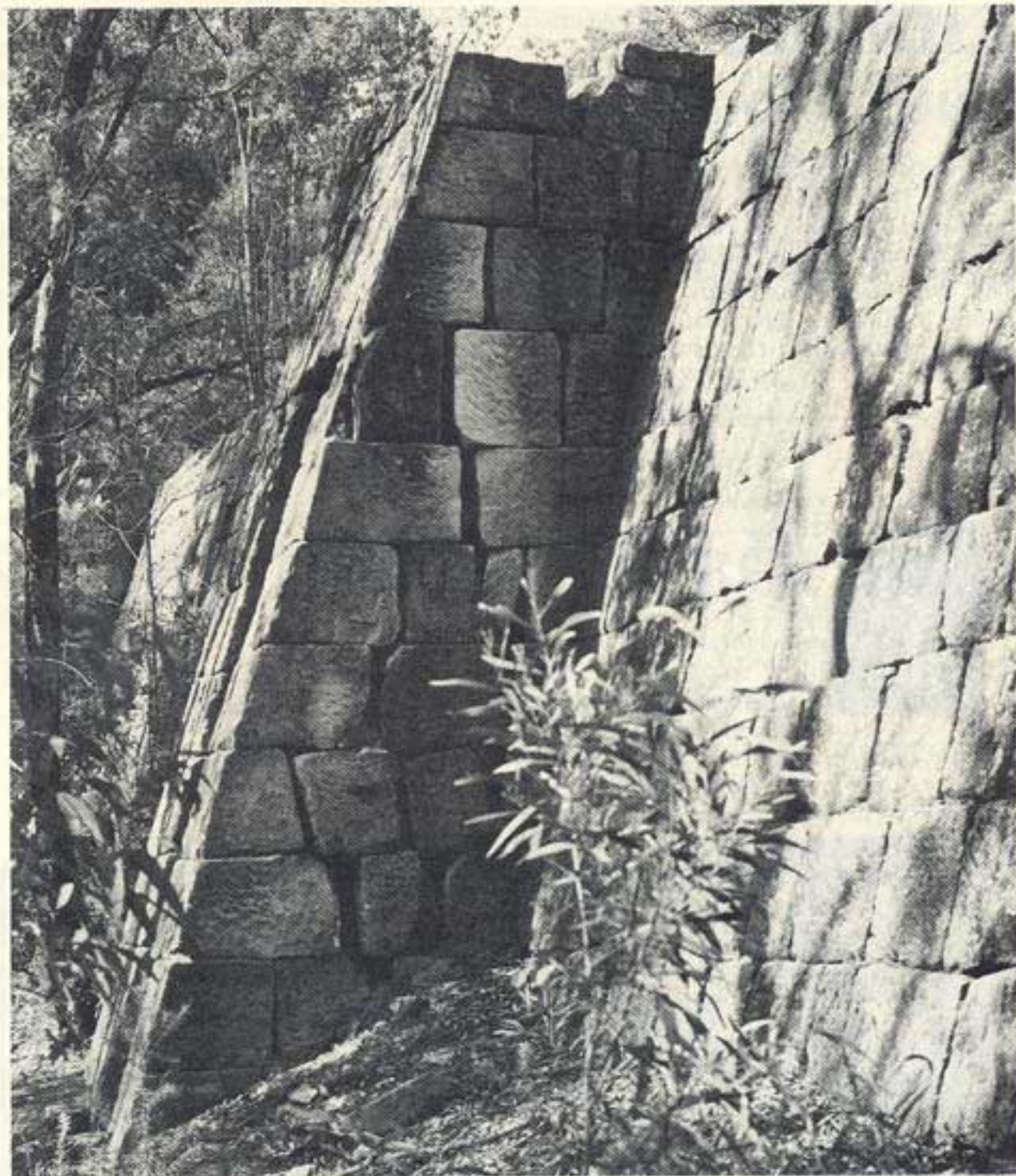
Daily provisions in 1830 consisted of 1½lbs wheatmeal, 1lb fresh or salt meat, 1oz sugar, 1½oz salt and ½oz soap. Hours of work were long. In summer the convicts were mustered at 5 a.m. and worked until 5 p.m., while in winter their workday was shortened by two hours.



Leg irons found near the Great North Road.

About half the gangs on the Great North Road were "iron gangs", which meant that each man was shackled by irons averaging about 6 lbs. in weight, but sometimes weighing up to 9 lbs.

The labour the convicts performed included blasting, cutting and quarrying the road, spreading the gravel surface, digging ditches and constructing sandstone retaining walls and drainage systems. New methods developed during the road-building revolution in England in the



A buttress and retaining wall on the ascent of Devine's Hill.

1810's and 1820's were employed, and today the road is considered one of the finest surviving examples of early colonial road-building expertise. The National Trust has classified three adjoining sections of the road and each includes some spectacular feats of engineering.

Classified sections

The first section from Glenorie to Wiseman's Ferry was constructed between 1826 and 1832, under the direction of Lieutenant Jonathon Warner and then Lieutenant Percy Simpson. It was the latter who was responsible for the fine zig-zag construction supported by substantial coursed sandstone walls, which descends the steep mountain to the Hawkesbury.

The ascent on the opposite side of the river to the summit of Devine's Hill, with its immense walls, buttresses, numerous drains and impressive cuttings, is probably the best-known features of the Great North Road. It falls within the Trust's Wiseman's Ferry to Mt. Manning classification, and has recently been added to the Dharug National

Park. The National Parks and Wildlife Service is presently undertaking maintenance of the structure.

The most northerly listing, between Mt. Manning and Paynes Crossing, was constructed between 1830 and 1834 under the direction of Surveyor Heneage Finch (1830-31) and Assistant Surveyor L. V. Dulhunty (1832-34). This section also retains some good examples of unusual stonework. Of particular interest is the curved stone-block retaining wall (1830-32) at Ramsay's Leap on the side of Mt. Simpson. This structure, measuring approximately 10 metres in height and 90 metres in length, features an elaborate culvert with a projecting run-off stone to direct water onto the stone head-water below. Such an arrangement protected the wall from the eroding effects of running water.

Constructed in response to the colony's rapid expansion, the Great North Road reflects the ideals of men such as Darling and also the importation and adaptation of new scientific theories on road-engineering. It was only fitting that a Colony, with rich and boundless resources and an ever-increasing population to utilise them, should be endowed with such a grand and permanent road.

Exhibition of watercolours

The Australian Watercolour Institute's prestige Annual Selling Exhibition will once again be held at the Trust's S. H. Ervin Museum and Art Gallery.

This will be the Institute's 58th annual selling exhibition. Last year this popular event was staged for the first time at the

Trust's gallery, and President of the Institute, Mr. Frederick Bates, said that it was the most successful exhibition they have ever had. Reviews and sales were excellent.

More than 100 contemporary works by Australia's leading watercolourists will be on view and for sale from Saturday, October 3 to Sunday, November 8.

Prominent artists represented will include Eva Kubbos, Lloyd Rees, Hal Missingham, Brian Stratton, Frank McNamara,

Frederick Bates, Hector Gilliland, Margaret Coen, Janna Bruce and Venita Salnajs.

The works, covering a wide range of interesting subjects from landscapes and still life to abstract design and figurative work, will range in price from 150 to several thousand dollars.

The Australian Watercolour Institute was established in 1923 as a national body under the presidency of B. E. Minns. Membership is by invitation only and noted artists such as Rah Fizelle, Blamire Young, Sid Long, Norman Lindsay and M. Napier Waller have been members.

Friends of the S. H. Ervin Gallery will be holding a special preview of the exhibition. Details appear on Page 23 of this Magazine.



Gaslight Antiques

Importers of
Antique Lighting c1800-1920 & Fine Victorian Furniture



The finest selection of antique gasoliers, electroliers and Victorian burr walnut furniture available in Australia.

Regular shipments from France and England.

Special attention to New South Wales enquiries
81-85 COTHAM ROAD, KEW, VICTORIA, 3101
Telephone: (03) 80 4760 all hours.

Cinzano glass

The world-famous Cinzano Glass Collection, an outstanding exhibition of 140 antique drinking glasses, is on view now at the S. H. Ervin Museum and Art Gallery, Observatory Hill, Sydney.

A great wealth of craftsmanship is displayed in this Collection, which spans 19 centuries and represents the four great periods of glass – Roman, Venetian, Continental and English.

Cinzano (UK) Ltd. commissioned the Collection in 1970, and it is being exhibited in Australia to coincide with the 50th anniversary of the Cinzano Company in Australia.

Presented by the Australian Gallery Directors' Council, the Cinzano Glass Collection will be on view in the Trust Centre gallery until Sunday, September 20. The gallery's opening hours are Saturday and Sunday, 2 p.m. to 5 p.m., and Tuesday to Friday, 11 a.m. to 5 p.m. The Trust regrets that children under 10 years of age will not be admitted to this exhibition.

LATE J. S. HORN

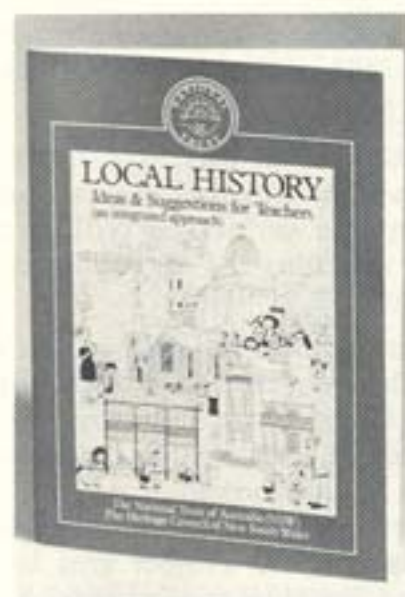
The Trust has conveyed its sympathy to the family of the late Commander John Strelley Horn (RN retired).

Commander Horn was a generous benefactor of the Trust. A life member, he took a close interest in Trust activities. He donated a canteen of antique green ivory handled cutlery which is now on display at Old Government House, and a superb mahogany extension dining table which is in the Trust Centre. In accordance with his wishes, Commander Horn's three daughters have donated six dining chairs for the table.

Throughout his life, Commander Horn has had an overriding interest in Australian history. He taught himself Braille and transcribed many books by Australian authors for the Royal Blind Society. He also donated books and historical records to the Mitchell Library, and was a life member of the Australian Conservation Foundation.

Three new Trust books

The following National Trust publications are now available at the Trust bookshop, Observatory Hill.



Local History: Ideas & Suggestions for Teachers (an integrated approach), prepared and published by The National Trust of Australia (NSW), with financial assistance from the Heritage Council of NSW, 1981. 36 pp., illustrated, paperback 29.5 x 20.5 cm. \$2.50.

The Trust's Education Committee has prepared this publication to assist in the teaching of local history.

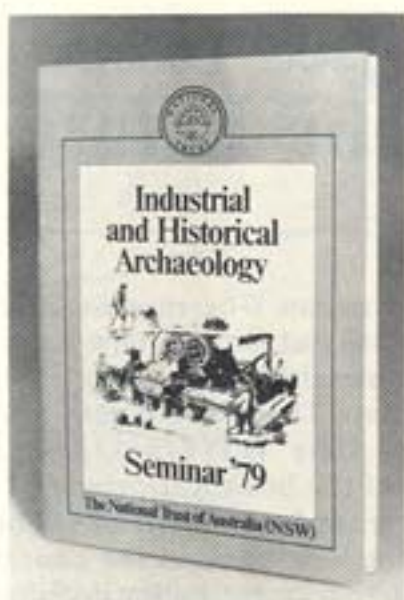
The publication aims to:

- identify a number of starting points which can be used when studying local history;
- focus attention on various aspects of an area which can be studied;
- suggest questions which might be asked;
- provide avenues for finding answers.

Four thousand copies of the book have been distributed free of charge to all schools and local councils in NSW. Reception has been very enthusiastic.

Mr. Bryan Cowley, History Curriculum Consultant for the Department of Education, gave the publication high praise. He said, "The book is not only informative, succinctly written and exceedingly well illustrated, but it contains a wealth of practical guidelines and help for teachers (especially in the Sources section). I am sure history teachers in particular will find it most useful . . . The Trust is to be commended for the quality of such a contribution to our students' education. My sincere congratulations."

The Trust believes that it is only by understanding our heritage that we can fully appreciate it and want to conserve part of it. The study of local history is one area where students can be helped to come to terms with their past.



Industrial and Historical Archaeology, Seminar '79 published by The National Trust of Australia (NSW) in association with The Australian Council of National Trusts, 1981. 68 pp., illustrated, paperback 29.5 x 20.5 cm. \$6.00.

The National Trust's first Industrial Archaeology Conference, held at Goulburn in 1979, was attended by more than 100 delegates, including professional archaeologists and educationalists around Australia. The 17 seminar papers examine the significance, identification, recording and assessment of Australia's often neglected archaeological sites.

Proceedings of the First Garden History Conference: Melbourne, 28-29 March, 1980 published by The National Trust of Australia (Victoria) in conjunction with the Australian Heritage Commission, 1980. 85 pp., illustrated, paperback 24.5 x 17.5 cm. \$5.00.

The first conference of the Australian

Garden History Society, held in Victoria's Heritage Week, 1980, brought together people from all over Australia — owners of historic gardens, botanists, landscape architects and those interested in preserving and propagating historic plants.

This book contains 14 papers delivered at the conference, as well as some of the discussions.



Howard Tanner relates several fascinating anecdotes about the development of gardens in Australia, such as the story behind the painting *A Primrose from England* by E. W. J. Hopley. "He never visited Australia," Mr. Tanner said, "but heard the tale of a primrose in flower arriving off the boat in Sydney Cove and of the crowd aswoon over the once familiar sight."

Mr. Broadbent reveals the problems facing the restorer: "You can preserve plums and peaches, but you can't bottle a whole garden up. You can, however, restore individual elements."

Kerry Trollope sells quality antiques of all descriptions. Furniture, pottery & porcelain, glass, sterling silver, silver plate, clocks, brassware, copper, instruments, cast iron, mirrors, etchings & many interesting items mostly pre 1880.



Member of the Antique Dealers



Association of New South Wales.

Kerry Trollope Antiques
414 Lyons Rd., Five Dock 712 1102

Hours: 10 a.m. — 5 p.m. Tues. to Sat. Closed Sun. & Mon.

Tyrell's Book Shop

PTY. LIMITED



Antiquarian & second hand books, text books, records & sheet music. Full range of art materials for professional and student.

SINCE 1905

328 PACIFIC HIGHWAY
CROWS NEST N.S.W. 2065

TELEPHONE 43 5920, 439 3658



ARTISTS SUPPLY CO.

21 Atchison St., St. Leonards,
N.S.W., 2065.

Ph.: (02) 43 3241 or 43 0349

83-85 George St., Sydney,
N.S.W., 2000.

Ph.: (02) 27 2716

SUPPLIERS OF
FINE AND COMMERCIAL
ART MATERIALS TO THE
AUSTRALIAN MARKET
SINCE 1954.

COLOURS, PAPERS, BOARDS,
CANVAS, DRAWING
INSTRUMENTS, CANVAS
PANELS, BRUSHES,
TRANSFER LETTERING,
DRY MOUNTING & FRAMING.

BOOKS

Hopes razed on Glebe Estate

The Australian Government Publishing Service has just issued a new book on the Commonwealth's pioneering efforts to rehabilitate The Glebe Estate in central Sydney. Here Ian Evans, journalist, author of the book *Restoring Old Houses*, publisher, and a resident of Glebe, considers the new book in the context of recent Government policy decisions.

"When the Commonwealth acquired the historic Glebe Estate in 1974, it was threatened with . . . wholesale demolition, displacement of the traditional low income residents and comprehensive redevelopment."

The extract is from the foreword to the Commonwealth Government's recently published record of the still unfinished rehabilitation of the Glebe Estate, formerly owned by the Anglican Church and the area from which the suburb of Glebe derived its name.

The words have an ironic ring in the wake of the razoring of the Project by a political task force anxious to assert the Commonwealth's commitment to smaller government and the free enterprise ideal.

This carefully compiled book documents the achievements of the Government in rehabilitating the 700 houses on 19 hectares of the Glebe Estate, purchased by the Whitlam Government in 1974 for the bargain price of \$17.5m. One can only guess at the reaction of the authors of the book at the decision to dispose of the Estate, announced before their work reached the bookstores.

The debate over the proposed sale of the Estate has understandably concentrated on the social impact on the Glebe community. It is unfortunate that other aspects have so far been neglected, for the Glebe Project is a remarkable exercise in urban renewal, preserving a social fabric built up over more than a century while renewing a unique group of houses which not so long ago were considered to be slums.

The fact that these homes are now seen as highly desirable inner city residences indicates how far attitudes have changed in a short period of time.

One of the apparent contradictions of conservative philosophy, as it is practised

B & B ENAMELS

Set of 5 depicting National Trust houses. Phone: (02) 439-0066, Ex. 244.

in Australia, is that Liberal governments are so anxious to dispose of profitable ventures. The Glebe Estate, considered as an investment, has been a great success.

If it were to sell on the open market, the Commonwealth's profit after deducting all expenses since purchase would probably be in excess of \$40m. But we would in fact all be losers, for a fragmented Glebe Estate in the hands of some 700 individual owners would soon become as much of a hodge-podge as any other inner-city suburb which has become the victim of trendy or ethnic renovators.

We must keep at least one area of intact Victorian housing in original condition. One might as well suggest selling a national park or the ruins at Port Arthur to private enterprise.

It is easy enough to criticise the method in which restoration has been carried out on the Glebe Project. In many cases the evidence of original features has been ignored or overlooked. Cast iron patterns which are not known to have been used on houses in the Project area have been imported because someone took a fancy to them.

Potential tragedy

A telling example of neglected evidence can be seen in the before and after photographs of No. 117 Derwent Street, illustrated on page 87 of the book, in which the "restored" picket fence is noticeably different from the original fence shown in a 19th century photograph on the same page.

We can only guess at the damage to other 19th Century features, particularly in the increasingly interesting area of 19th Century decoration, which has occurred while contractors rushed in to swiftly renovate entire rows of cottages.

Tenants in the Project houses must quite recently have been pondering the wisdom of a decision to improve under-floor ventilation by blocking fireplaces and opening the hearth to enable chimneys to be used as ventilators.

All of these qualifications aside, there is no doubt that the National Estate has greatly benefited by the 1974 Commonwealth decision to purchase the Glebe Estate. Its alienation from public ownership would be a tragic loss to the nation. To quote once more from the Commonwealth Government's excellent book:

"The Glebe Project has generated new and useful information on the technical, economic, social and administrative aspects of housing renewal. The . . . Project is a unique demonstration of an alternative approach to housing and construction in Australia."

GLEBE PROJECT, Department of Housing and Construction, published by the Australian Government Publishing Service, Canberra, 1980. Paperback, 180 pages, recommended retail price \$7.60.



How windows have changed

With thanks to artists Howard Tanner and John Gregory.

◀ PRIMITIVE (about 1788-1820)

Glass was very expensive and almost impossible to get in the early days of the Colony. There was plenty of timber available, so ledged and braced wooden shutters, hung on rawhide hinges, were used. When the shutter was open, a hessian curtain reduced the draught. This style of window is difficult to find now, but they are used sometimes in farm buildings such as stables.



▲ FEDERATION (about 1890-1915)

Another type of window came into fashion towards the end of last century. Large sheets of glass were used to catch the view and the smaller panes over the top were softly coloured for decoration. Sometimes pieces of stained glass, joined by strips of lead, were used in all or part of the window. You can find windows like this in Federation style houses in Strathfield, Drummoyne and Haberfield.

AUSTRALIAN GEORGIAN (about 1788-1825)

Settlers who could afford glass had windows like this in their houses. The glass could only be made in small sheets, so to make a large window, several panes (often 12) were used. The window was double-hung, that is, it had two separate sections. The top section was fixed and the bottom section was held up by brass or iron pivot catches or timber pegs. Experiment Farm Cottage at Parramatta, Willandra at Ryde and small cottages in George Street, Windsor, all have windows in this style. ▶



◀ VICTORIAN ITALIANATE (about 1850-1880)


Arches and other fancy details decorated this double-hung window. Bigger sheets of glass could be made now, so window panes were much larger. Lead or iron counterweights, hidden at each side of the window were used to hold it open. Many terrace houses in Glebe, Paddington and Stanmore have windows like this.



COMPETITION

Can you find a house that has windows like any of these? Draw the house, and describe in a few sentences what else you think is interesting about that house. The best entry will win a book prize, so please tell us your name, age and address. Send your entry to "Things to see and do", The National Trust of Australia (NSW), Observatory Hill, Sydney, 2000.

Elizabeth Bay House



7 Onslow Avenue, Elizabeth Bay
Ph: 358 2344. Take the 311 bus from Hunter St., near Wynyard.

VISIT HISTORIC ELIZABETH BAY HOUSE

Built in 1838 this house was one of the finest of its day . . . Now restored and furnished to its former glory.

OPEN FOR INSPECTION

Adults 50c
Students and Pensioners 20c.

Elizabeth Bay House — a living remembrance of an elegant Colonial lifestyle, its art, architecture and furnishings. Come and see Elizabeth Bay House soon — it belongs to you.

Tuesday to Friday	10 a.m.	4 p.m.
Saturday	10 a.m.	5 p.m.
Sunday	12 noon	5 p.m.

Closed Mondays, except public holidays.



AGM Weekend at Goulburn

The Trust's Annual General Meeting Weekend in Goulburn, on October 24 and 25, promises to be a big success.

Following the announcement of the weekend's activities in the June issue of the Trust *Magazine*, almost 300 members have applied for tickets.

Members who have not yet applied need not be discouraged. There are still plenty of tickets for all the activities, with one exception – the Annual Dinner on the evening of Saturday, October 24.

The Dinner, at Goulburn College of Advanced Education, will include a Musical Hall programme with singing and comedy sketches. There is only a limited number of tickets left, so members still wishing to attend should apply early (details below).

An additional item on the weekend's programme, arranged since the last *Magazine*, is a lecture by restoration architect Mr. Clive Lucas, OBE, a Vice-President of the Trust, at Goulburn College of Advanced Education on the evening of Friday, October 23.

Conservation talk

Mr. Lucas will talk on architectural restoration and conservation and afterwards he as one of an expert panel will answer questions from the audience. Admission will be free.

All members are urged to attend the Annual General Meeting, also at Goulburn College of Advanced Education, at 11 a.m. on Sunday.

Other highlights of the weekend will include visits to the historic properties Longreach (late 1830's), at Marulan, and Lockyersleigh. Members will also have the opportunity to inspect three recently-restored town houses in Goulburn as well as the City's outstanding Court House (1887).

Sunday lunch, after the Annual General Meeting, will be chicken-in-the-basket at Riversdale, the Trust's historic former coaching inn at Goulburn.

Tickets for the Trust Dinner (\$14 each), the Sunday Lunch (\$5 each) and the Property Inspections (Members \$6, Non-Members \$9) are available from Mrs. S. Holt, Wingello Park, Marulan, NSW 2580. Cheques made payable to "National Trust Southern Tablelands Region Women's Committee" and a stamped self-addressed envelope should be enclosed with an application for tickets.

For convenience, members should apply for tickets on the special form distributed with the June issue of the *Magazine*. This form also included an Accommodation Booking Form for motels and other accommodation in Goulburn.

What are these?

These drawings appear in the Trust's new educational kit on Old Government House and Experiment Farm Cottage, the first such kit to be produced on a Trust property.

The kit has been prepared by the Education Committee, which was established by the Trust with the fundamental aim of fostering interest and awareness in children and adults of heritage conservation.

This educational kit is designed to bring Old Government House and Experiment Farm Cottage to life and to help interpret the historical significance of these two important buildings.

There are three components of the kit:

- 27 slides of the two properties;
- 20 worksheets containing background information, floor plans, questions and activities;
- a booklet of teacher's notes containing guidelines for using the material, suggested activities, answers to worksheet questions and slide commentary.

The kit will be of greatest benefit if used in conjunction with a visit to the two properties. Prior to the visit, background discussions could take place and the slides shown to alert children to items of interest.

Rather than taking notes during the visit, children should be free to listen and observe. The worksheets can then be completed in class or at home. Further discussions and slides could follow, so students may examine matters which interested them.

Although the kit is designed primarily for use in schools, it is presented in such a way that it can serve a number of purposes. Any group interested in historical matters could hold a slide and discussion night based on the kit's material. At \$15, the kit would make an ideal gift, providing hours of enjoyment at home.

The Trust's Education Committee gratefully acknowledges the financial assistance of the Young Trust, photography by Jim Whitelock and illustrations by Margaret Simpson in the production of this kit.

The educational kit may be purchased for \$15 from the Bookshop at the National Trust Centre, Observatory Hill, Sydney, at Old Government House, and at Experiment Farm Cottage.

What are they?

Domestic items at Old Government House (from left): Sugar cones; butter stamp, wooden spoon and pat; candle makers.

The National Trust of Australia (N.S.W.)

ANNUAL GENERAL MEETING

Notice is hereby given that the Annual General Meeting of The National Trust of Australia (N.S.W.) will be held at the Goulburn College of Advanced Education, Goulburn, on Sunday, October 25, at 11 a.m.

Business

- To confirm the Minutes of the previous Annual General Meeting
- To receive the Annual Report
- To receive the audited Income and Expenditure Accounts for the year ended June 30, 1981, and Balance Sheet at June 30, 1981.
- To announce elected Councillors for 1981-82
- To appoint an Auditor
- To consider and if thought fit to elect Mrs. Joan Furber and Mr. John Fisher Honorary Life Members, such election having been recommended by the Council
- To deal with any appropriate business that may be brought forward in accordance with the Rules.

R. J. W. d'Apice,
Hon. Secretary.

Note: The Annual Report for 1980-81 will be forwarded to members with the November Magazine. Copies will be available at the National Trust Centre from Monday, October 19, and will be provided for members attending the Annual General Meeting.

THE NATIONAL TRUST WAY TO EUROPE, 1982

Following the Tours and Lectures Committee's successful tour of Italy, Switzerland, France and Jersey, another tour, of approximately 30 days duration, is planned for June 1982 to Austria, Germany and Belgium.

Again we plan to take our time, with stop-overs of three nights giving members two full days in most cities and towns followed by one travelling day.

We shall start with four days in Vienna, then journey through the beautiful Austrian alpine countryside to Graz, Salzburg, Innsbruck and Lake Konstanz. In Germany we shall drive through the Black Forest and up the Rhine to Heidelberg and Düsseldorf, then to Luxembourg and on to Bruges for our final days.

The tour will end in London, and members will have an open-ended return ticket enabling them to extend their stay if they wish.

Full details of the itinerary, dates and fares will be published in the next Magazine. Please direct any inquiries to World Travel Headquarters Pty. Ltd., Kindersley House, 33 Bligh Street, Sydney, 2000, telephone (02) 232-4844, or Mrs. Bettine Robertson, telephone (02) 92-8710.

Thirty-eight Trust members, who recently took the National Trust Way to Europe and South-West England, considered the tour a great success.

A highlight was a guided tour by members of the Venice in Peril Fund, which has carried out some important restoration work, notably on the Doge's Palace. The tour also included visits to several French chateaux, where the owners took members on a privately conducted tour.

THE NATIONAL TRUST WAY TO THE NORTHERN TERRITORY

Members who take the Trust Way back to the Dreamtime next June will have the opportunity to visit such places as Gove on the Gulf of Carpentaria, Darwin, Kakadu National Park, Katherine Gorge,

Alice Springs, Ayers Rock, The Olgas, Glen Helen and Kings Canyon. Further details will appear in later Magazines and inquiries can be made to Mrs. Chandler, Penthouse Travel, telephone (02) 231-1455.

THE NATIONAL TRUST WAY TO THE MEDITERRANEAN AND BEYOND BY QANTAS, 1983

As there has been such interest expressed in this suggestion plans are going ahead for a tour including a two-week cruise to the Greek Islands and possible visits to Israel, Crete, Greece, Italy and other European countries, finishing in London. Further details will appear in later Magazines and inquiries can be made to Mrs. Chandler, Penthouse Travel, telephone (02) 231-1455.

WIRRIMBIRRA COACH TOUR

Wednesday, October 7

The Landscape Conservation Committee is arranging a coach tour to Wirrimbirra

Sanctuary, a Trust property near Bargo, on Wednesday, October 7. The coach will depart from York Street, between Margaret and Jamieson Streets, at 9.30 a.m. and return about 5 p.m. Tickets, at \$7.00 for members and \$7.50 for non-members, are available from the Trust Centre. Inquiries to Mrs. Nancye Patten, 9 a.m. to 5 p.m., on (02) 27-5374. Please bring a picnic lunch and your walking shoes.

ANNUAL MEETING AT WIRRIMBIRRA

Saturday, November 7

The David G. Stead Memorial Wildlife Research Foundation of Australia is holding its 18th Annual General Meeting at Wirrimbirra Sanctuary on Saturday, November 7 at 1.30 p.m. The sanctuary is a Trust property between Tahmoor and Bargo on the Hume Highway. Barbecue facilities will be available, and visitors can inspect the Field Studies Centre, purchase native plants at the nursery and publications at the shop. Admission is free.

itchy feet

THE TRAVELLER'S SHOP

the specialist shop for the traveller's needs

(great ideas for the stay-at-home too!)
practical travel accessories . . . travel hair-dryers, irons etc . . . the best travel guides
indispensable day-to-day needs . . . games for the journey . . . bon voyage gifts galore

QUALITY AUSTRALIAN GIFTS FOR ALL AGES — to take or send with pride

TWO Wahroonga — rear 19 Redleaf Avenue, phone 48 2434

SHOPS Pymble — upstairs (above Weavers) 955 Pacific Highway, phone 449 9107

PENTHOUSE TRAVEL PTY. LIMITED

28-34 O'CONNELL ST., SYDNEY, N.S.W.

• PHONE: 231 1455 •

Dear Member,

Many of you will now be familiar with our organisation through special interest tours arranged in the past. During 1979/80 we will continue to offer tours for those seeking something different and exciting. We would also like you to know that we would be happy to assist with any individual travel arrangements you may need for yourself and your family. No detail is too small for our attention so please call us anytime. We are here to provide you with assistance, courtesy and efficiency.

*Sincerely,
PENTHOUSE TRAVEL*

HISTORIC BUILDING RESTORATION BY

MICHAEL HEATHCOTE & ASSOCIATES

63 Jersey Road, Woollahra, Sydney, NSW 2025 (B.L. N^o26716)

32 2704

SP3316

FRIENDS OF THE S. H. ERVIN GALLERY

The Trust's S. H. Ervin Museum and Art Gallery is now assisted by a group of devoted supporters – the Friends of the S. H. Ervin Gallery. The Guardians of the Gallery initiated the idea, and more than 60 Guardians attended the inaugural meeting and expressed great enthusiasm.

The group is now firmly established, with the aims of organising fund-raising functions and promoting interest in the Gallery. Suggested projects include the endowment of an annual lecture in memory of the late Sir Russell Drysdale.

The first function has already been held – a film evening in the Gallery, with Dr. and Mrs. Lloyd Rees as special guests. More film evenings, pre-exhibition functions and slide and lecture nights are planned.

Membership of the Friends of the S. H. Ervin Gallery is open to all. Subscriptions rates are \$5 a year and \$3 a year for Gallery Guardians. Members will be invited to special functions, with opportunities to bring friends.

Please complete the form on Page 29 if you wish to lend your support and join the Friends.

SPECIAL RAFFLE

A superb Royal Worcester plate (marked 1923) will be raffled by the Southern Tablelands Women's Committee. Featuring a floral centrepiece, the plate has a blue and ivory background with gold filigree.

Proceeds from the raffle will help finance restoration of the stables at Riversdale, the Trust's historic coaching inn at Goulburn. Tickets at 50c each or a book of 10 tickets for \$5 are available from Mrs. Ann Holt, Wingello Park, Marulan, NSW, 2580. Please make cheques payable to the National Trust Southern Tablelands Regional Women's Committee. The raffle will be drawn at the Trust's Annual General Meeting weekend, October 24-25.

A GARDEN DAY IN DARLING POINT

Wednesday, September 23

The Garden Committee has arranged an interesting day this Spring at Darling Point. Five charming and varied gardens will be open for inspection on Wednesday, September 23, from 10.30 a.m. to 3 p.m.

At Lindesay, 1 Carthona Avenue, there will be exhibitions and sales of Mrs. Anne Hamilton's beautiful ceramics and of Mr. Anton Murre's fascinating sandstone sculptures. Here too, plants and homemade produce will be on sale, also coffee and biscuits. Members and friends who bring their lunch may picnic in the garden at Lindesay or in the reserve at the end of Darling Point Road.

The Committee extends its warm appreciation to Sir Marcus and Lady Loane, Mr.

and Mrs. D. B. H. Arnott, Mr. and Mrs. R. E. Henty, Dr. and Mr. F. L. Ritchie and the Body Corporate of Longwood for their generosity in allowing Trust members and friends to see their gardens. Sir Marcus and Lady Loane have kindly agreed to open the chapel at Bishops-court for inspection.

Tickets are \$3.00 each, and early application is advisable on the form on Page 29 of this Magazine.

CANDLELIGHT EVENING

Friday, November 6

Old Government House will be illuminated by candles, as it was in the early 19th Century, on Friday, November 6. The guide ropes will be removed to allow free movement through the building.

Candlelight Evenings at this Vice-Regal house are always popular, and those interested are advised to book early as numbers are limited. Tickets, at \$15 each, include a light supper and may be applied for on the ticket application form on Page 29 of this Magazine. Black tie is suggested.

NCC ANNUAL DINNER

Saturday, October 31

The Nature Conservation Council of NSW is holding its 26th Annual Dinner at the Australian Museum on Saturday, October 31. Guest speaker will be Senator Colin Mason, Deputy Leader, Australian Democrats. Tickets at \$10 each, including all drinks, are available from The Environment Centre, 399 Pitt Street, Sydney, 2000, telephone (02) 267-7722 or Mr. Jim Brown, 12 Fox Valley Road, Wahroonga, 2076, telephone (02) 48-1236. Numbers are limited.

DECORATIVE ARTS COURSE

The Centre for the History of the Decorative Arts is holding a course in October on European and Australian antiques from the Renaissance onwards. This 6-week, full-time course will be repeated in March and June, 1982. The study group will be limited to 20 students with a serious interest in the decorative arts. For more information, contact The Secretary, The Centre for the History of Decorative Arts, 29 Norfolk Street, Paddington, 2021, telephone (02) 331-3914, mornings only.

THE TRUST NEEDS HELP

The Trust would appreciate the regular voluntary assistance of two typists or shorthand typists. Work will involve providing assistance for a number of different sections at the Trust's headquarters. Parking is available at the door. Anyone who would like to assist should contact Miss Paula Lonergan on (02) 27-5374.

THE BARRIER REEF

Public meeting and film

Are you one of those who have been persuaded that all is right with the Reef? Did you know that while the Prime Minister and others have been uttering soothing words, Queensland has regained control and ownership of the territorial sea, within which it will be able to permit oil drilling where there is no marine park declared? Or that Queensland has been given an equal say with the Commonwealth as to which areas of the Great Barrier Reef Region will become marine park, and which areas will be drilled for oil? Did you hear about the recent legislation giving a joint Commonwealth-State authority the power to approve drilling in the Coral Sea? Are you aware that the big tourist operators are making their plans for further development of resort islands? What do you know of the depredations by Taiwanese fishermen on our giant clams?

You should come to this meeting, and listen to our distinguished speaker and learn how you, quite easily, can help avert a national tragedy.

We also have some first-class cinematic entertainment for you – a majestic 35 mm colour film, revealing the full glory of the Great Barrier Reef. THE REEF was made for the Australian Conservation Foundation, and has been shown in Queensland and overseas.

The public meeting will be held in the Union Theatre, Sydney University (Parramatta Road entrance) on Tuesday, November 3, at 7 p.m. There will be no admission charge, but donations are vital to the success of the Save the Reef Campaign and will be most welcome.

For further information contact: Australian Conservation Foundation/Reef Action, Phone 27-1497 or Mr. Reece McDougall at the National Trust, Phone 27-5374.

THE ECO SHOW



Environmental Radio on 2SER-FM Thursdays 9.20pm.

National Trust Real Estate Service

The National Trust provides a Real Estate service which seeks to introduce vendors of heritage property to sympathetic purchasers who will respect the property's special qualities. If you wish to register your interest as a prospective purchaser, or if you have for sale a property likely to be of interest to Trust members, please contact Mrs. Powell at the Trust Centre. The properties illustrated below are listed for sale under this scheme, and further information on them is available from Mrs. Powell. Information on these properties has already been circularised to prospective purchasers who have registered interest in these particular types of buildings.



FOR PUBLIC AUCTION

258 Bulwara Road
Ultimo

Imaginative re-use of old sandstone building, incorporating former shop and residence of early Victorian era. Large living area, dining room, luxurious pine-lined master bedroom, 2 smaller bedrooms, Italian-tiled bathroom, kitchen/breakfast room, carport. To be auctioned by L. J. Hooker Ltd., 1st Floor, Hooker House, 175 Pitt Street, Sydney at 10.30 a.m. on Tuesday, October 13. Co-agents, National Trust RES and L. J. Hooker, Glebe.



FOR SALE \$85,000

21 Francis Street
Richmond

Single storey, full-brick Victorian house in Italianate style, CLASSIFIED by the Trust. Attractive cast iron frieze work, timber fretwork. Well renovated, 3/4 bedrooms, modern kitchen, bathroom, laundry, enclosed garden room at rear, double garage, Berber carpet throughout. Site 24 x 21 m, overlooking Hawkesbury River. Co-agents, National Trust RES and L. J. Hooker, North Richmond.



FOR SALE \$75,000

196 Howick Street
Bathurst

One of group of workingmen's cottages CLASSIFIED by the Trust (c.1837), single-storey, brick with galv. iron roof. Zoned 3(b) Special Business. Excellent commercial locality; ideal for shop, restaurant or office. Original picket fence, front door and 12-paned windows. Fully renovated. 4 front rooms, kitchen, bathroom, laundry and enclosed rear sunroom, delightful garden with paved patio. Site 333.2 sq.m. Placed exclusively with National Trust RES.



FOR SALE \$75,000

198 Howick Street
Bathurst

Slightly later than its neighbours (c.1880), part of CLASSIFIED group. Zoned 3(b) Special Business. Excellent commercial proposition in centre of town - with possibility of development as group (boutique, coffee shop, restaurant, antique shop, etc.) using combined rear gardens. 4 front rooms, kitchen, bathroom, laundry, garage. Site 373.1 sq.m. Placed exclusively with National Trust RES.



FOR SALE \$65,000

200 Howick Street
Bathurst

Semi-detached cottage owned and recently renovated by the National Trust under its Small Houses Scheme. Simple, symmetrical cottage (late 1850s) in sound condition. Zoned 3(b) Special Business. Possibility of commercial use individually or as part of group. Contains 4 rooms plus kitchen, bathroom and general purpose rooms. Council car park at rear and ample room for sympathetic additions. Agent, National Trust RES.



ON SITE AUCTION

5 Stuart Street
Longueville

Magnificent 2-storey sandstone house with scenic view of Lane Cove River. Adjacent to park with river access, own boat mooring and 3 minute walk to ferry. Verandah with cast iron columns and decoration, 3/4 bedrooms, 2 bathrooms, living rooms, recent kitchen and laundry. White marble chimney pieces, original doors and joinery. Pleasant gardens. To be auctioned by Peter Pantling, Licd. Auctioneer, on site at 2.30 p.m. on Saturday, October 10. Co-agents, National Trust RES and Doug Middleton Real Estate.



AFTER AUCTION P.O.A.

24 Chelmsford Street
Camperdown

Fully renovated, split-level brick terrace house, with attic/studio. Quality workmanship, complete new wiring and plumbing, sunny aspect. Entry court, one bedroom, dining/family room, kitchen, laundry, bathroom, verandah to courtyard. Laneway at rear. Central to Newtown and Sydney University. Co-agents, National Trust RES and Raine & Horne, Newtown.



ON SITE AUCTION

24 Oxley Street
Campbelltown

Substantial 2-storey, mid-Victorian villa (c.1860), set in old world garden. 4 bedrooms, large living and dining rooms, kitchen, bathroom, laundry and paved rear terrace. 6 fireplaces, polished cedar joinery. Some restoration required. Site 208.7 sq.m. Zoned 2(b), possibility of use as consulting rooms. To be auctioned on site by Mr. Trevor Dunshea, Licd. Auctioneer, at 2.15 p.m. on Saturday, October 3. Co-agent, National Trust RES. Co-agent/owner Forge Campbelltown.



FOR PUBLIC AUCTION

**Aberglasslyn
Maitland**

One of Australia's finest Regency mansions (1840-42), sited on a rise with view of the Hunter River and pastoral landscape. Believed designed by John Verge (architect for Elizabeth Bay House). Two-storey sandstone building, containing 17 rooms including 6 bedrooms and cellar. Major restoration work to a very high standard already carried out. Early Victorian garden reconstructed. (See article, Page 3). To be auctioned by L. J. Hooker Ltd., 175 Pitt Street, Sydney at 10.30 a.m. on October 13th. Co-agents National Trust RES and L. J. Hooker, Maitland.

APPLYING FOR TICKETS

Please apply for tickets on the form on Page 29 of this Magazine (noting all the small print) and post, enclosing a stamped self addressed 23 cm x 10 cm (9in x 4in) envelope, to the Ticket Secretary, Young Trust, P.O. Box 129, Crows Nest, NSW 2065. Urgent inquiries only should be directed to the Ticket Secretary (Debbie Thomson, telephone (02) 419-4581 strictly between 7 p.m. and 9 p.m.) regarding bookings, or to the Co-ordination Officer (John Kindersley, telephone (02) 660-7371 strictly between 7 p.m. and 9 p.m.) regarding transport or accommodation.

SPECIAL PREVIEW

October, date not finalised

Queen Street Galleries at Woollahra have offered the Young Trust a special viewing of early architectural engravings by Piranesi and after William Chambers, Robert Adam, Colin Campbell and others, which have been brought especially from London. There will be a charge payable at the door. For further information, telephone Sandra Macarthur-Onslow on (02) 419-2894 (7 p.m. to 9 p.m. only).

**SPRING IN THE
WOLGAN VALLEY**

Weekend, September 19-20

The Wolgan Valley is classified by the Trust, both for its spectacular beauty and for its still visible association with the shale oil industry. We will camp amongst the remains of the village of Newnes, and spend our time inspecting the Valley, the remains of the industrial township and the shale workings, and probably walk across the ridge to Glen Davis following the route of the old pipeline that once linked these two settlements.

The weekend calls for an early start at 7 a.m. Saturday. We will be home by 8 p.m. on Sunday. Camping will be either beside, or a short walk from, your cars. The 'with food' ticket price includes lunch and dinner on Saturday, and breakfast and lunch on Sunday. The other price includes only the leaflet and inspections. Inquiries to Albert Renshaw (02) 816-1846.

FOR SALE

6 Cast iron columns. Rare twining leaves design. Sandblasted and painted. \$300.00 each, pairs only, or \$1,500.00 the lot.

Phone office hours only, weekdays (02) 93-2371.



FOR PUBLIC AUCTION

**36 Bungaree Road
Toongabbie**

Delightful wisteria-draped, single-storey, rendered-brick house (c.1887). Slate roof, bull-nosed verandah to 3 sides. 4 living/bedrooms, large living room, kitchen/scullery, bathroom and complete separate wing. Double garage. In need of repair, but many original fittings. Large battle-axe block. To be auctioned by Raine & Horne, Parramatta, at 10 a.m. on Saturday, October 17 at the Leigh Memorial Hall, Macquarie Street, Parramatta (opposite Post Office). Co-agent, National Trust RES.

**HALLMARKED STERLING
SILVER CUTLERY**



Full settings or solely individual items available in 15 designs from long established Sheffield cutler. Considerable savings through payment scheme and by making solely to order. Typical price \$600 per six piece setting (silver under £6/oz.). Knives only \$50 to \$80 ea.

Write for leaflet:
**T. Mathew, 23 The Ridge,
Canterbury, 3126.
Telephone: (03) 82 4998.**

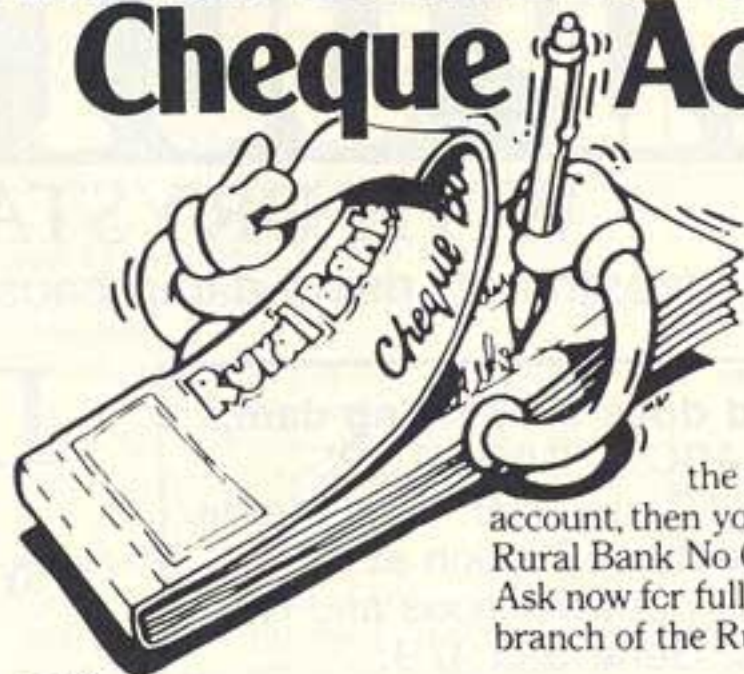
GALLERY PREVIEW

Thursday, October 1

Friends of the S. H. Ervin Gallery invite members to attend a special preview of this exhibition of works for sale in the Trust's S. H. Ervin Museum and Art Gallery at the Trust Centre, Observatory Hill, Sydney. Those attending will have the first opportunity to purchase paintings.

The function begins at 5.30 p.m., and champagne and chicken sandwiches will be served. Please telephone Mrs. L. Rasmussen on (02) 449-5668 or the Trust's Gallery Office on (02) 27-9222, if you wish to obtain tickets at \$7 each (\$5 each for Friends of the S. H. Ervin Gallery). Please note that numbers are limited.

**Save money with a
Rural Bank No Charge
Cheque Account.**



If you don't write many cheques, but want the convenience of a cheque account, then you will really appreciate a Rural Bank No Charge Cheque Account. Ask now for full details at your nearest branch of the Rural Bank.



The Rural Bank does more for you- *Personally*

SOUTHERN HIGHLANDS

Long Weekend, October 3-5

Come with us and see the Southern Highlands in the Springtime, by joining the Young Trust in a delightful weekend at the Ranelagh Guest House, Robertson. During this weekend we intend to include inspections of historic buildings in areas such as Jamberoo, Kangaroo Valley, Robertson and Moss Vale. Areas of scenic interest include Barren Ground Nature Reserve, Fitzroy, Carrington Falls, Burrawang and Kangaloon.

The cost includes accommodation Saturday and Sunday night, dinner Saturday and Sunday, breakfast Sunday and Monday, lunch Sunday and all entrance fees. This is a self drive activity. Inquiries to David Child (02) 498-3757 (7 p.m. to 9 p.m. only).

YOUNG TRUST COTTAGE OPEN DAY

Sunday, October 11

Come to Observatory Hill, Sydney between 2 p.m. and 4 p.m. and see where your money and support has been used over the last two years. We look forward to seeing you.

THE AUCTIONING OF ANTIQUES

Sunday, October 18

James R. Lawson Pty. Ltd. have been auctioning antiques and fine art in Sydney since 1884. This evening one of their staff experts will briefly share with us some of the principles which are used in the buying and selling of antiques and fine art.

This activity commences at 6 p.m., and the talk will begin at about 6.30 p.m. The function will take the form of a champagne preview of paintings to be auctioned.

STEAM'S UP. ALL ABOARD

Sunday, October 18

On this day we will travel to the Rail Transport Museum at Thirlmere by train to view the large collection of locomotives and rolling stock housed there. At the Museum we expect that films will be screened and a conducted tour of the area will take place. The ticket price includes unlimited rides on the steam trains to Buxton or Picton from Thirlmere.

Picnic facilities (including barbecues) are available at the Museum, so please bring your lunch hamper. Inquiries to John Marshall (02) 412-2359 (7 p.m. to 9 p.m. only).

YOUNG TRUST ANNUAL GENERAL MEETING

Wednesday, November 4

The 17th Annual General Meeting of the National Trust of Australia (NSW) Young Trust will be held in the S. H. Ervin Museum and Art Gallery at the National Trust Centre, Observatory Hill, Sydney at 7.30 p.m. on Wednesday, November 4.

Written nominations are now being called for the following positions on the Young Trust Committee: Chairman; Activities Officer; Treasurer; General Secretary; Minutes Secretary; Ticket Secretary; Functions Officer; Promotions Officer; Membership Secretary; Catering Officer; Co-ordination Officer; Special Projects Officer; Goods for Sale Officer; Convener, Historic Buildings Sub-Committee; Convener, Historic Research Sub-Committee; Convener, Landscape Conservation Sub-Committee; Convener, Industrial Archaeology Sub-Committee.

Nominations must be lodged at the Trust Centre, Observatory Hill by 5 p.m. on Wednesday, October 21. Nomination forms and details of the duties of each committee position are now available from the Trust Centre. The Committee

for the next 12 months will be elected by a vote of members present at the meeting and all members are urged to attend.

Please note that experience in any particular area is not essential in order to stand for a committee position - so long as you are keen to learn.

The formal part of the evening will be followed by a most interesting talk to be given by Mr. Peter Nicholls, Executive Director, NSW Bicentennial Council, about the council, its work and ideas. All members are welcome to attend the evening, which will conclude with a light supper.

WARRAGAMBA TO WOMBEYAN Weekend, November 7-8

A fascinating weekend awaits you. We visit Warragamba Dam, then travel south to view Lake Burragorang from Nattai Lookout, before proceeding to Wombeyan Caves where we will camp overnight. Sunday will be spent visiting Wombeyan Caves before heading west to the historic villages of Taralga and Crookwell.

The activity price includes dinner and breakfast at Wombeyan Caves, as well as lunch on Sunday. Hot showers will be available at Wombeyan Caves. This weekend will involve travel by private car over sections of unsealed road.

Inquiries to Richard Stacey (02) 799-4908 (7 p.m. to 9 p.m. only) or Peter Hill (02) 90-2982 (7 p.m. to 9 p.m. only).

IN THE SPIRIT OF THE MISSISSIPPI RIVER BOATS

Friday, November 13

As our last two evenings on the Lane Cove River were such a success, we are repeating this popular activity. The

Continued, Page 26

STAMP OUT DAMP

WITH DRYSTAT

Protect your investment, rising damp causes structural damage.

Drystat Pty. Limited does cure rising damp.
Winners of the ABC's "INVENTORS" programme number 10 of 1979. Gold Medal winner in Architectural Section at 8th International Exhibition of Inventions and New Techniques, Geneva, 1979.

FOR OBLIGATION FREE INSPECTION AND QUOTE

DRYSTAT

519 5077
SYDNEY

We guarantee every job.
Drystat Pty. Limited

For Service Beyond The Contract
Builder's Licence No. 15857

MELBOURNE 489 4322

DRY3791/L

A Special Double Offer from The Wedgwood Collectors Society to Members of The National Trust

YOURS FREE

The Wedgwood Collectors Society Membership Plate (11.75 cm - 4 3/8" dia.) when you purchase the Floral Girl Plate or join the Society.



Wedgwood

Wedgwood Floral Girl Plate

Pale Blue and White Jasper ware - 165 mm (6 1/2") diameter. Decorated with figures from the original designs by William Hackwood in the late 18th Century. Gift boxed \$65.00 plus \$2.00 postage and packing.

Be one of the few people in Australia ever to own this plate!

A masterpiece of graceful design and exquisite decoration, The Floral Girl Plate has been selected by The Wedgwood Collectors Society as an outstanding example of traditional Wedgwood skills... released in an edition strictly limited to only 5000 plates worldwide.

Delicate, intricate motifs in a harmonious flowing design.

The Floral Girl Plate is decorated with six individual groupings of cupid figures each separated by a floral garland. These elements provide a stunning contrast to the graceful beauty and motion of the central figure. The Floral girl and cupid motifs were modelled by the famous Wedgwood artist, William Hackwood, in the 18th Century. Only craftsmen trained to Wedgwood's standards could hand apply such ornamentation with such perfection - at once delicate and yet incredibly detailed.

Only 5000 plates are available worldwide. This rare plate will be one of the most valued in your collection, to display, enjoy and share with family and friends. And given the reputation of the designer and maker... and the strictly limited edition, it could well prove an investment which could increase considerably in value.

ACT NOW. The superb Floral Girl Plate can be yours to cherish for only \$65 (plus p & h). And with it, you receive one year's complimentary membership of the exclusive Wedgwood Collectors Society and your free Jasperware membership plate worth \$19.50. Just think, it could be the start of a life-long collecting adventure! Why not buy a membership for a friend as well.

Wedgwood® is an Australian registered trademark of Wedgwood Limited.

The Wedgwood Collectors Society

On joining the Society you receive the handsome plate shown above as well as the informative Newsletters which give details of further items made exclusively for the Society. While there is no

obligation, purchase of only one item in a year makes your next years membership (normally \$15) FREE. The first year's membership fee is waived when you buy your Floral Girl Plate.

©Bond International 1981
In association with Rigby House (a Division of RPLA Pty Ltd)

RBC 291 W FGP

If order form has been removed, write to The Wedgwood Collectors Society, 50 Clarence Street, Sydney, NSW, 2000. Telephone (02) 297137 Telex 24915.



Applications will be treated strictly in order of postmark. We regret phone reservations cannot be accepted.

Full Refund if not delighted.



SUBSCRIPTION APPLICATION

The Wedgwood Collectors Society
50 Clarence Street, Sydney NSW 2000.
Tel: (02) 290 2677 Telex: 24915

Please tick one:

Enrol me as a Member of The Wedgwood Collectors Society. My first acquisition is the Floral Girl Plate for which I am enclosing \$67/\$134. Send my Membership Plate at no added cost and waive my first year's \$15 Membership Fee.

I wish only to join The Wedgwood Collectors Society. Enclosed is my payment of \$15 for first year's Membership Fee. Please enrol me as a Member and send my Membership Plate at no added cost.

Enclosed is a cheque/money order for \$ _____
OR
Please charge my *Bankcard/Diners Club/American Express Card Account with \$ _____
Credit Card
Account No: _____

Expiry Date: ____/____/____

Signature: X _____

Name: _____

Delivery Address: _____

State: _____ Postcode: _____

Limit two plates per collector.
Please allow 21 days for delivery.
This offer is invalid in those States where it contravenes the law.



765B

NTM0981

From Page 24

paddlewheeler cruises the river while you dine and dance under the stars.

We depart at 7.30 p.m. and, in the tradition of the Deep South, you will be welcomed aboard with a pre-dinner cocktail, followed by a sumptuous repast of spit-roasted beef and pork, salads, a refreshing dessert and coffee. We will dance away the hours until landfall at 11.30 p.m.

As numbers will be limited, early bookings are essential. Inquiries to Margaret Edwards (02) 419-7035 (7 p.m. to 9 p.m., Monday to Friday only).

PYRAMID APPEAL

The Pyramid Glasshouse at the southern end of Sydney's Royal Botanic Gardens is now firmly established as one of the Gardens' most popular attractions.

An appeal has now been launched for funds to build another two such pyramidal greenhouses.

One of the proposed pyramids will be exclusively devoted to Australian species.

For information about purchasing tickets in an Art Union, telephone the Royal Botanic Gardens on (02) 27-4347.

THE SYDNEY MARITIME MUSEUM: INSPECTION AND SUPPER NIGHT

Wednesday, November 18

The Sydney Maritime Museum is now well and truly established in its home at Birkenhead Point (just off Victoria Road at the southern end of Drummoyne). As it will be daylight saving time, the evening will commence at 6 p.m. with an inspection of the Museum's proudest exhibits - the sailing vessel *James Craig*, the steam tug *Waratah*, the old pilot vessel *John Oxley*, and the magnificently restored *Lady Hopetoun*. We will be able to inspect these vessels from 6 p.m. to 8 p.m., then we will retire to the Museum itself for another inspection and a short talk. The evening will conclude with supper.

You are welcome to arrive after 6 p.m., but a complete inspection of the four vessels cannot be guaranteed to anyone arriving after 7 p.m. Parking is available on site. If you travel by public transport, buses from the city to Drummoyne and the Ryde areas will take you to Birkenhead Point - just ask to be put off at the first stop after Iron Cove Bridge.

Price is \$4, payable at point of entry to the vessels.

PITTWATER CRUISING

Sunday, November 29

The spectacular waterway of Ku-ring-gai National Park covers an area of over 14,000 hectares, housing some of Sydney's most beautiful scenery. During this full-day activity we will be commencing our trip from Palm Beach viewing the sights of Clareville, Scotland Island, Bayview, Church Point, Lovett Bay and Towler's Bay, cruising to the Basin for a picnic lunch, and returning to Palm Beach at approximately 4 p.m.

All members are requested to bring their own refreshments and lunches. Barbecue facilities will be available.

Please note: This activity is open to Young Trust members only.

Inquiries to Sue Degenhardt (02) 389-8071 (7 p.m. to 9 p.m. only) or Sandra Macarthur-Onslow (02) 419-2894 (7 p.m. to 9 p.m. only).

YOUNG TRUST CHRISTMAS

Saturday, December 5

A delicious menu combined with one of Sydney's best country rock bands, Jim Cooper and the Silver Eagle Band, dancing and the company of good friends - we think you will agree that these ingredients go to make a memorable evening.

We have selected hors-d'oeuvres and wine, whole leg hams, roast beef with Bernaise sauce, barbecued chickens, a variety of salads, coffee and petit fours as our menu.

Our venue will be the National Trust Centre at Observatory Hill, Sydney, under the cover of a huge marquee. We look forward to the company of many

members and their friends. Inquiries to Sue Degenhardt (02) 389-8071 (7 p.m. to 9 p.m. only).

DONATIONS TO THE TRUST

The Trust is pleased to acknowledge the following Sponsorship donations of \$200 or more:

- \$1,500: John Fairfax Limited.
- \$800: J. B. Were & Son.
- \$600: Rheem Australia Limited.
- \$500: EGLO Engineering Ltd.; Mobil Oil Australia Limited; Valder Elmslie & Company.
- \$400: Legal & General.
- \$350: Greater Union Organisation.
- \$300: Australian Fertilizers Limited; Burns Philp & Co. Ltd.
- \$275: Ku-ring-gai Municipal Council.
- \$250: Carrington Slipways Pty. Ltd.; Concord Municipal Council; Hooker Corporation; Metal Manufacturers Ltd.
- \$200: Ampol Petroleum Limited; Assta Enterprises Pty. Ltd.; Atlas Copco Australia Pty. Ltd.; Bank of New South Wales; Edwards Dunlop & Company Limited; Formfit Pty. Ltd.; G. J. Coles & Coy Limited; Hoover (Australia) Pty. Limited; Hunter Douglas Limited; Hunters Hill Municipal Council; International Pacific Corporation; Lane Cove Municipal Council; Marrickville Municipal Council; Mr. & Mrs. T. Martire; Merck Sharpe & Dohme (Australia) Pty. Ltd.; Overseas Containers Australia; Phoenix Assurance Company of Australia; Polaroid Australia Pty. Ltd.; Society for Christian Truth; St. Regis-ACI Pty. Ltd.; Unilever Australia Pty. Limited; United Dominions Corporation Ltd.; Winthrop Investments Limited.

The Trust is also pleased to record its appreciation to the following donors who have given amounts of \$100 or more, but less than the \$200 which entitles the donor to be appointed a Sponsor of the Trust.

- \$100 to \$199: William Adams & Co.; Ashfield Municipal Council; J. Blackwood & Son; Cadbury Schweppes Pty. Ltd.; Collie & Company Limited; Edgar Edmondson Pty. Ltd.; Kraft Foods Ltd.; Mr. M. Martire; Mosman Municipal Council; Plessey Australia Pty. Ltd.; South British United; Mr. H. Vanderpol; Miss L. E. Watkins; Watty Limited; Mr. W. J. Holt.

QUILT RAFFLE

A beautiful quilt, appliqued with charming bird and floral motifs on a neutral background, will be raffled by the Embroiderers' Guild, NSW, to raise funds for the Guild. This non-profit organisation offers lessons in all types of traditional or modern embroidery. The quilt is a joint project by members of the Guild. The raffle will be drawn in November and tickets, at \$1 each or three for \$2, may be obtained by sending a cheque or money order and a stamped, self-addressed envelope to The Embroiderers' Guild, NSW, 167 Elizabeth Street, Sydney, 2000. Telephone inquiries (02) 36-2742 or (02) 33-6851.

Phoebe Lingerie AT CHATSWOOD

SILKS AND SATINS
SWISS
BATISTES & VOILES
EASY CARE COTTONS
SLEEPWEAR . . . GOWNS
LINGERIE
TROUSSEAU SETS

Phoebe LINGERIE
at Prevue of Chatswood
415 Victoria Avenue,
CHATSWOOD
Phone: 419 7684

Phoebe LINGERIE
987 Pacific Highway
PYMBLE.
Phone: 449 6102

WOMEN'S COMMITTEE CALENDAR

A DAY ON THE UPPER NORTH SHORE

Tuesday, October 13

Renowned for its gardens and houses of substantial elegance, St. Ives is always a showplace. This inspection has been arranged in the Spring when the district is at its loveliest and presents three houses of varied and interesting architectural styles. It is suggested that members take advantage of the fact that the houses are fairly close together — park and stroll! It should be a full, yet relaxed day.

HUNTERS HILL DAY

Tuesday, November 10

A visit to Hunters Hill in jacaranda time, again by popular demand! Since the last inspection, prices paid for water frontage homes and the extraordinary interest in this quiet peninsular have left older residents somewhat stunned! Much re-modelling of more modest real estate is going on and the two houses members will visit have been cleverly transformed — one a depression era cottage, the other a sedate bungalow on an incomparable Lane Cove River water frontage.

Nearby the Roman Catholic Church of St. Peter Chanel, built of sandstone early this century, may be inspected from 10 a.m. to 4 p.m.

Tuesday house inspections are for Trust members only and we regret that numbers must be restricted. In fairness to householders, children under twelve cannot be admitted to either Tuesday or country weekend inspections. Please provide your own transport. Applications to be made on enclosed form to The Ticket Secretary, P.O. Box 53, Edgecliff 2027 (telephone (02) 32-2401 between 9.30 a.m. and 1 p.m. Monday to Friday).

**Tuesday, October 13
(Members only)**

A Day on the Upper North Shore. 9 Fairway Avenue, St. Ives, by courtesy of Mr. and Mrs. G. H. Lowe. 70 Pentecost Avenue, St. Ives, by courtesy of Mr. and Mrs. R. Berry. 17 Boolarong Road, St. Ives, by courtesy of Mr. and Mrs. R. F. Carr.

10.30 a.m. to 12 noon OR 12.30 p.m. to 2 p.m. OR 2.30 p.m. to 4 p.m.

**Tuesday, November 10
(Members only)**

Hunters Hill Day, 20 Crescent Street, Hunters Hill, by courtesy of Mr. and Mrs. R. Lintott. Villandry, 32 Woolwich Road, Hunters Hill, by courtesy of Mr. and Mrs. John Chippindall.

10.30 a.m. to 12 noon OR 12.30 p.m. to 2 p.m. OR 2.30 p.m. to 4 p.m.

St. Peter Chanel Roman Catholic Church, Futuna Street, Hunters Hill may be inspected between 10 a.m. and 4 p.m. by courtesy of the Reverend James Doyle.

Jan Taylor Galleries Phone (02) 436 1216

Blues Point Tower, 14 Blues Point Road, McMahons Point 2060

Australian Paintings and Prints valued for Insurance, Estate and Market Appraisal

IMPORTANT TRILOGY — FIRST EDITIONS

The Journal of
ARTHUR BOWES SMYTH
Surgeon,
Lady Penryhn
1787-1789

The Journal of
PHILIP GIDLEY KING
Lieutenant, R.N.
1787-1790

The Journal of
RALPH CLARK
Officer of Marines
1787-1792

\$22.95
216 pp. Illus.

\$29.95
442 pp. Illus.

\$26.95
350 pp. Illus.

After surviving 190 years in private and library collections — the last of the known First Fleet manuscript journals have now been published.

Produced as a matching set, casebound with jackets, they have been edited and fully indexed by Dr. P. G. Fidlon and R. J. Ryan of the Australian Documents Library.

Available for immediate MAIL ORDER despatch, they can be purchased separately (post free) — or as a set at a SPECIAL DISCOUNT PRICE of \$69.00, including postage.

Available from LIBRARY OF AUSTRALIAN HISTORY, 17 Mitchell Street, North Sydney, 2060.

BANKCARD or AMERICAN EXPRESS welcome — quote number, expiry date and sign.

**HABERFIELD
MARKET DAY**

Come and visit Haberfield on Saturday, October 17.

A Market Day will be held from 10 a.m. to 4 p.m. at St. Oswald's Church Hall, on the corner of Dickson and Dalhousie Streets, by courtesy of the Reverend D. Robinson.

There will be a variety of stalls and conducted tours by mini-bus will be available to see the Federation architecture of the unique Garden Suburb of Haberfield.

Please direct inquiries to The Haberfield Association, Box 121 P.O., Haberfield, 2045. Telephone (02) 798-3835.

*The
Eryldene Trust*

**17 McIntosh Street, Gordon
CALENDAR OF EVENTS**

**Saturday 19th and
Sunday 20th September
10.30 to 4 p.m.**

IN THE GARDEN
*Fashions for Garden
Strolling.*

*Parades sponsored and
organised by MYER,
Gordon.*

Admission \$2.00

**Saturday 7th and
Sunday 8th November
10.30 to 4 p.m.**

HOUSE AND GARDEN
*A Pre-Xmas sale of
ARTS AND CRAFTS.*

Admission \$2.00

**Sunday 29th November
5.30 to 7.30 p.m.**

*Carols at Twilight
from the choirs of
Abbotsleigh, Wahroonga and
St. Ives High.*

Admission \$2.00

Phone 74-2183 for reservation.

**THE HIDDEN GARDENS
OF ORANGE**

Weekend, November 7-8

The Central West Women's Committee has prepared a weekend programme of gardens which have not previously been open to Trust members.

These gardens are concealed behind houses, walls and fences. Among them you will see one of the prettiest gardens in Orange, belonging to Dr. and Mrs. Winston Bennett; two prize-winning gardens, the properties of Mr. and Mrs. D. Roseby and Mrs. M. I. Smith, which will delight the horticulturalists; the family garden of Mr. and Mrs. R. J. Napier, planned to share with their young family; Mr. Alec Dalziell's secluded walled garden; and Mrs. Elsa Paul's bush garden. We will also take a morning's walk down Green Lane, visiting several hidden gardens and courtyards.

On Saturday, Dr. and Mrs. Alan Winkworth will welcome members bringing their picnic lunch to Barakee. From this well-designed hilltop garden, extensive views of the countryside may be enjoyed.

On Sunday, "Lunch by the Lake" will be served at Mr. and Mrs. John Sangster's Strathnook, Clifton Grove, with catering by the Orange Festival of Arts Committee.

Cook Park certainly should not be missed. At this time of year its glasshouse and fernery will be filled with beauty.

Miss Traill's House will be open from 2.30 p.m. on Sunday for those who wish to call in, when returning through Bathurst.

Tickets may be applied for on the appropriate form in the Magazine. Further details and a map will be included with the tickets.

BALMAIN WATCH HOUSE

The Balmain Watch House, at 179 Darling Street, Balmain, is open for public inspection each Sunday afternoon between 2 p.m. and 4 p.m. Admission is free. This sandstone police station, designed in the traditional Georgian style by Colonial Architect Edmund Blacket, was completed in 1854 under the supervision of William Kemp. Built within 10 years of the founding of Balmain, the Watch House has been restored by the Balmain Association who now occupy this building which is leased to them by the Trust.

COLIN J. FERGUSON

Solicitor and Attorney of
The High Court
of Australia and of
The Supreme Court
of New South Wales
1B Station Street,
Thornleigh. 2120.
Tel.: 848-9990

**OFFICE HOURS:
MONDAY TO FRIDAY 9-5
OR BY APPOINTMENT**

**A FAIR FEAST OF
19TH CENTURY FUN**

Vintage farm machinery, whip-cracking, wood chopping contests, an archery display, merry-go-rounds, Morris and Scottish dancing – all the fun of a 19th Century County Fair will take place in Goulburn on Saturday, November 21, to raise funds for the Trust.

The activity begins at 12 noon when carriages, sulkies and vintage cars will gather at Belmore Park for a grand procession through the streets of Goulburn to the Argyle College of Advanced Education. The Mayor will declare the County Fair officially open at 1 p.m. in the College grounds.

The fair is being organised by the College and the Trust's Southern Tablelands Regional Committee to raise funds for Riversdale, the Trust's historic former coaching inn (c.1840).

Members and friends are invited to come along in period or national costume as prizes will be given for the "best dressed". Ox roasted on the spit will be served with damper for lunch, with Devonshire teas available during the afternoon.

Children can enjoy the animal nursery and horse and pony rides, while adults try their hand at throwing a Wellington boot the furthest. Arts and crafts will also be on sale. Something for everyone!

If you don't know your way around Goulburn, notices will clearly direct you to the entertainment.

CAMDEN PARK OPEN WEEKEND

Weekend, September 26-27

This is to remind members that Camden Park, Menangle will, as usual, be open on the last weekend in September (the 26 and 27).

Tickets are available now and members and friends wishing to visit the historic Macarthur family house are asked to apply as soon as possible by using the form on Page 29 of this Magazine.

You are welcome to picnic in the grounds and wander through the house. The west wing corridor will be open for the first time. There will be the usual stalls selling National Trust items, tea, coffee and soft drinks.

BUILDER OF GILBULLA

In an item on open days at Camden Park and Gilbulla in the April Magazine, it was stated that Gilbulla was built by the Macarthur family. It has been drawn to the Trust's attention that the property was built by General James W. Macarthur-Onslow, the son of Captain Onslow and his wife Elizabeth, sole descendant of John Macarthur.

TICKET APPLICATION FORMS

WOMEN'S COMMITTEE TICKET APPLICATION FORM

Mr.
Name: Mrs.
Miss
Address:

..... Postcode:

Telephone:

Applications to be sent to:
THE TICKET SECRETARY,
NATIONAL TRUST WOMEN'S
COMMITTEE,
P.O. BOX 53,
EDGECLIFF, N.S.W. 2027.

Stamped self-addressed envelope: Preference will be given to members enclosing a stamped, self-addressed envelope.

Ticket application forms: Please follow instructions and cut along dotted line as directed. Send in the entire form, making deletions where appropriate — please *do not* cut form into small pieces, as this causes needless confusion.

CONTINUED OVERLEAF
CUT ALONG DOTTED LINE

OLD GOVERNMENT HOUSE

CANDLELIGHT EVENING
Friday, November 6

..... Tickets @ \$15 ea. \$:
Mr.
Name: Mrs.
Miss
Address:

..... Postcode:

Telephone:

MAILING ADVICE OVERLEAF

GARDEN COMMITTEE TICKET APPLICATION FORM

A GARDEN DAY IN DARLING POINT
Wednesday, September 23

..... Tickets @ \$3 ea. \$:
Mr.
Name: Mrs.
Miss
Address:

..... Postcode:

Telephone:

MAILING ADVICE OVERLEAF

YOUNG TRUST TICKET APPLICATION FORM

Applications to be sent to:

THE TICKET SECRETARY,
THE YOUNG TRUST,
P.O. BOX 129,
CROWS NEST, N.S.W. 2065.

Mail applications close one week before the activity. Telephone bookings will not be accepted.

Urgent enquiries only should be directed to the Ticket Secretary (Debbie Thomson, telephone (02) 419-4581 strictly between 7 p.m. and 9 p.m.) regarding bookings; or the Co-ordination Officer (John Kindersley, telephone (02) 660-7371 also only between 7 p.m. and 9 p.m.) regarding transport and accommodation.

Cheques or postal orders: These should be made payable to "The Young Trust". Tickets will be forwarded by the Ticket Secretary shortly after receipt of the Application Form.

Cheques should not include payment of National Trust membership subscriptions. These payments should be directed separately to the National Trust Centre, Observatory Hill.

Stamped self-addressed envelope: Please enclose with your ticket application a stamped, self-addressed 23 cm x 10 cm (9 in x 4 in) envelope.

Mr.
Name: Mrs.
Miss
Address:

..... Postcode:

Telephone: (Business)
..... (Private)

SPRING IN THE WOLGAN VALLEY
Weekend, September 19-20

..... Members @ \$8 ea. \$:
Non-
..... members @ \$10 ea. \$:
Members with
..... food @ \$25 ea. \$:
Non-members
..... with food @ \$29 ea. \$:

I do/do not require transport.
I can supply transport for..... persons.
I can/cannot help on this activity.

CONTINUED OVERLEAF

CENTRAL WEST WOMEN'S COMMITTEE TICKET APPLICATION FORM

THE HIDDEN GARDENS OF ORANGE

Weekend, 7-8 November

..... Members @ \$7 ea. \$:
Non-
..... members @ \$9 ea. \$:
Sunday
..... Lunch @ \$8 ea. \$:
TOTAL: \$:

Mr.
Name: Mrs.
Miss
Address:

..... Postcode:

Telephone:

MAILING ADVICE OVERLEAF
CUT ALONG DOTTED LINE

CAMDEN PARK TICKET APPLICATION FORM

..... Members @ \$2 ea. \$:
..... Friends @ \$3 ea. \$:

Please indicate which session:

..... Saturday 26, 1.30 p.m. to 4 p.m.
(Grounds open at midday)
..... Sunday 27, 10.30 a.m. to 12.30 p.m.
..... Sunday 27, 1.30 p.m. to 3.30 p.m.

Mr.
Name: Mrs.
Miss

Address:

..... Postcode:

Telephone:

MAILING ADVICE OVERLEAF
CUT ALONG DOTTED LINE

MEMBERSHIP APPLICATION FORM

Friends of the S. H. Ervin Gallery

I wish to become a member of the Friends of the S. H. Ervin Gallery and enclose my \$5 subscription for this year (Gallery Guardians \$3).

Mr.
Name: Mrs.
Miss

Address:

..... Postcode:

Telephone: (Bus).....(Home)

MAILING ADVICE OVERLEAF

CUT ALONG DOTTED LINE

**CENTRAL WEST
WOMEN'S COMMITTEE
MAILING ADVICE**

Please send this form with your cheque made payable to the Central West Women's Committee National Trust of Australia (NSW) AND a stamped self-addressed envelope to:

Mrs. Lawson Lobb
294 Russell Street,
BATHURST, N.S.W. 2795.
Telephone: (063) 31-5070

CUT ALONG DOTTED LINE

**CAMDEN PARK
MAILING ADVICE**

Please send this form, your cheque (made payable to Camden Park Preservation Committee) and a stamped, self-addressed envelope to The Secretary, Camden Park Preservation Committee, Camden Park, Menangle, NSW, 2568.

**FRIENDS OF THE
S. H. ERVIN GALLERY
MAILING ADVICE**

Please send this form with your cheque or money order made payable to The National Trust of Australia (NSW) to:

Mrs. L. Rasmussen
10 Orinoco Street,
PYMBLE, N.S.W. 2073.

Signature:.....

Dated:.....

**YOUNG TRUST
(Continued)**

SOUTHERN HIGHLANDS

Long Weekend, October 3-5

..... Members @ \$65 ea. \$:
Non-
..... members @ \$70 ea. \$:
No. of males No. of females
I do/do not require transport.
I can supply transport for persons.
I can/cannot help on this activity.

STEAM'S UP. ALL ABOARD

Sunday, October 18

..... Members @ \$10 ea. \$:
Non-
..... members @ \$11 ea. \$:
..... Children @ \$7 ea. \$:
(under 16 years)

THE AUCTIONING OF ANTIQUES

Sunday, October 18

..... Members @ \$3 ea. \$:
Non-
..... members @ \$4 ea. \$:

WARRAGAMBA TO WOMBEYAN

Weekend, November 7-8

..... Members @ \$26 ea. \$:
Non-
..... members @ \$29 ea. \$:
I do/do not require transport.
I can supply transport for persons.
I can/cannot help on this activity.

**IN THE SPIRIT OF THE
MISSISSIPPI RIVER BOATS**

Friday, November 13

..... Members @ \$16 ea. \$:
Non-
..... members @ \$18 ea. \$:

PITTWATER CRUISING

Sunday, November 29

..... Members @ \$6 ea. \$:
Non-
..... members @ \$8 ea. \$:
I do/do not require transport.
I can supply transport for persons.
I can/cannot help on this activity.

YOUNG TRUST CHRISTMAS

Saturday, December 5

..... Members @ \$23 ea. \$:
Non-
..... members @ \$26 ea. \$:
TOTAL \$:

**HAVE YOU INCLUDED YOUR NAME
AND ADDRESS?**

**WOMEN'S COMMITTEE
(Continued)**

Cheques and postal orders should be made payable to National Trust Women's Committee.

Refunds: Unless one week's notice of cancellation is given to the Ticket Secretary, with tickets returned, refunds will only be made where tickets can be resold.

A DAY ON THE UPPER NORTH SHORE

Tuesday, October 13

(Members only)

..... Tickets \$2.50 ea. \$:
Please state order of preference:
..... 10.30 a.m. to 12 noon OR
..... 12.30 p.m. to 2 p.m. OR
..... 2.30 p.m. to 4 p.m.

HUNTERS HILL DAY

Tuesday, November 10

(Members only)

..... Tickets \$2.50 ea. \$:
Please state order of preference:
..... 10.30 a.m. to 12 noon OR
..... 12.30 p.m. to 2 p.m. OR
..... 2.30 p.m. to 4 p.m.

TOTAL: \$:

Less refund owing: \$:

TOTAL: \$:

CUT ALONG DOTTED LINE

**OLD GOVERNMENT HOUSE
MAILING ADVICE**

Please send this form and your cheque made payable to National Trust Old Government House Committee AND a stamped self-addressed envelope to:

The Manager
Old Government House
P.O. Box 431,
PARRAMATTA, N.S.W. 2150.

**GARDEN COMMITTEE
MAILING ADVICE**

Please send this form with your cheque made payable to National Trust Garden Committee AND a stamped, self-addressed envelope to:

The Ticket Secretary,
37 Bathurst Street,
WOOLLAHRA, N.S.W. 2025.
Telephone: 387-2529

The National Trust of Australia (N.S.W.)

MEMBERSHIP APPLICATION FORM

You can help the National Trust in its efforts to conserve Australia's environmental heritage, simply by becoming a Member or encouraging one of your friends to join. The benefits of membership include

- * The National Trust Magazine delivered, free, to your address five times a year
- * Free admission to National Trust properties around Australia, when others have to pay
- * The opportunity to join National Trust excursions (ranging from overseas tours to one-day coach trips)
- * The opportunity to inspect historically and architecturally significant private houses and other buildings
- * The opportunity to join in Young Trust activities (open to all Trust members), ranging from bush walks to social evenings
- * Specially-arranged discounts on selected new books as they are published

Please note: This form is for new memberships, not for membership renewal.

The Director,
The National Trust of Australia (N.S.W.),
Observatory Hill,
SYDNEY. N.S.W. 2000.
Telephone (02) 27 5374

Please indicate by X the type of membership desired, enclose appropriate sum, and post to the address quoted above.

- | | |
|---|-------------|
| <input type="checkbox"/> Ordinary Membership | \$16 a year |
| <input type="checkbox"/> Household Membership (includes two adults plus family under 18 years of age) | \$24 |
| <input type="checkbox"/> Student Membership (full time students only) | \$8 |
| <input type="checkbox"/> Pensioner Membership | \$8 |
| <input type="checkbox"/> Life Membership | \$300 |
| <input type="checkbox"/> Joint Life Membership (two adults at the same address) | \$450 |

Note: Your first subscription will entitle you to membership of the Trust for twelve months from the date of acceptance of this application.

Mr.
Full Name: Mrs.....
Miss (Block letters, please)

Address.....

Postcode.....

Telephone.....

Signature..... Date.....

National Trust Wine Offer

TO: TYRRELL'S VINEYARDS

I WISH TO ORDER:

- | | | |
|---|----|---|
| dozen Cabernet Port (\$36 per dozen) | \$ | : |
| half-dozen Cabernet Port (\$18 per six-pack) | \$ | : |
| dozen Hunter Champagne (\$30 per dozen) | \$ | : |
| dozen Hunter Dry Red Hermitage (\$25 per dozen) | \$ | : |
| dozen Hunter Riesling (\$25 per dozen) | \$ | : |
| dozen Hunter Flor Fino Sherry (\$12 per half dozen) | \$ | : |
| My cheque is enclosed for | \$ | : |

DELIVERY INSTRUCTIONS (if applicable):

MAILING ADVICE

FREE DELIVERY TO CAPITAL CITY ADDRESSES, OR TO BRANXTON RAILWAY STATION FOR DESPATCH BY RAIL TO OTHER CENTRES

For inquiries, please contact Mrs Pearson at Pokolbin (049) 98-7509

TO: TYRRELLS VINEYARDS PTY. LTD., POKOLBIN, N.S.W. 2321

NAME

ADDRESS

POSTCODE TELEPHONE



A major redevelopment and restoration project authorised by THE GOVERNMENT OF NEW SOUTH WALES.

History, architecture, entertainment, arts and crafts, art galleries, antiques, culinary delights, and walking tours available 7 days a week.

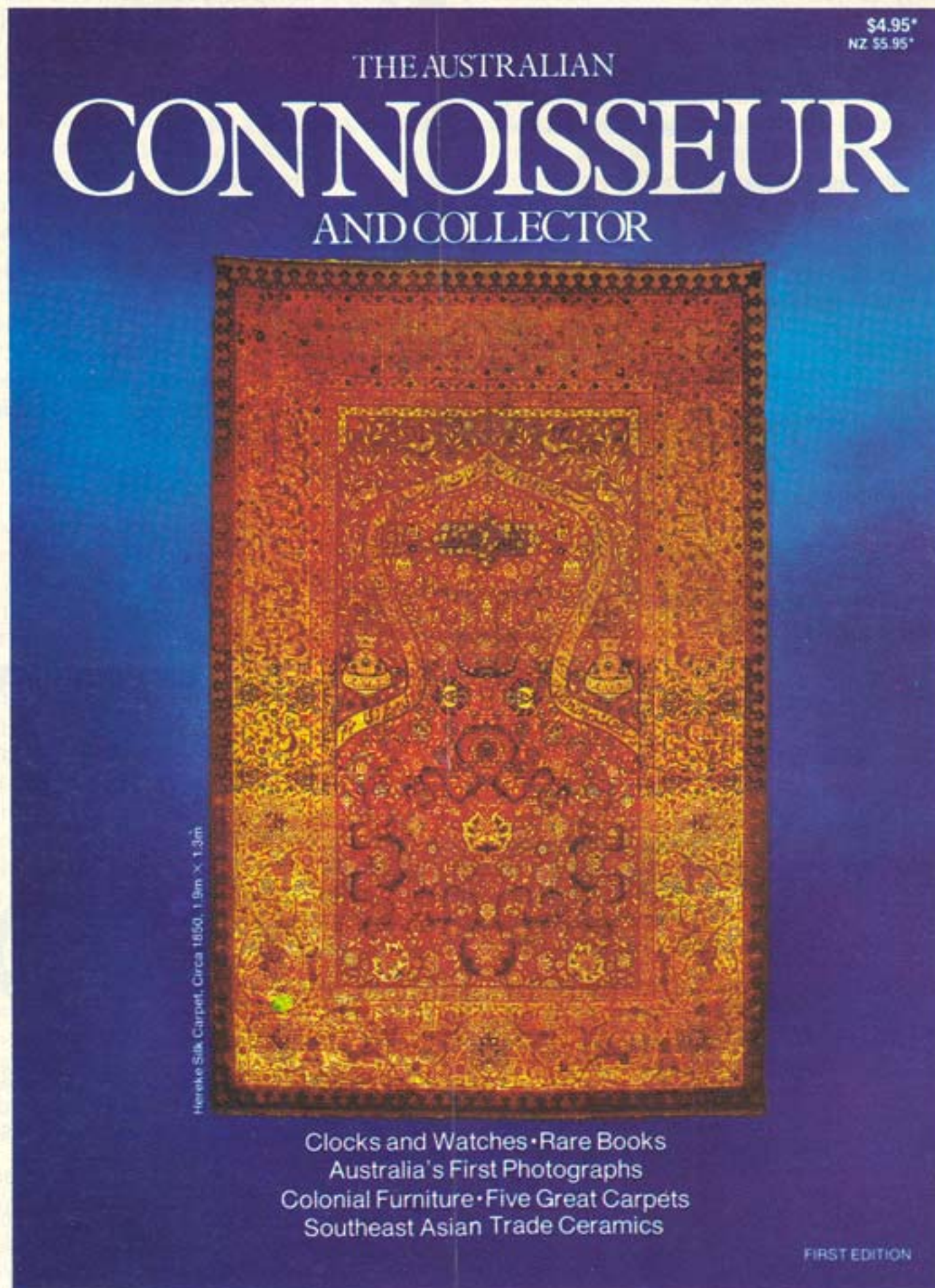
Call first at THE ROCKS VISITORS CENTRE, 104 George St, for free maps, film and information. Tel. 27 4972



SYDNEY COVE REDEVELOPMENT AUTHORITY Revitalising The Rocks

11513

Announcing an Elegant New Title from Murray Publishers Designed for Collectors of Fine Arts



- Also in this issue — The Heidelberg School of Painting
- Early Australian maps and gold coins
 - Cinderella Stamps
 - Arts and Crafts Jewellery and the history of "Liberty"

AUSTRALIAN CONNOISSEUR AND COLLECTOR

A quality magazine that no serious collector or astute investor
can afford to be without.

LBI Custom Blue Orb has the right dimensions for authentic re-roofing.



When the time comes to restore the roof, you'll naturally want to preserve the original look. And LBI Custom Blue Orb has it - with the traditional Lysaght width and shape, including the correct corrugation depth. LBI Custom Blue Orb is easy to work with and easy to curve into contours, as in bull-nosed awnings.

LBI Custom Blue Orb not only looks right, but it also offers important improvements on its admittedly worthy ancestors. Firstly, Custom Blue Orb is protected by long-life Zinalume, a positive improvement on old style plain galvanizing. Secondly, for finishing touches, Custom Blue Orb is available in beautiful, factory applied colour finishes like Colorbond, which not only looks right, but beats painting hands down.

You can order LBI Custom Blue Orb cut to length to match existing sheets - or in easier to work with longer lengths where exact restoration is not essential.

Please send the coupon for more details, or ring us for the name of your nearest distributor and to discuss the specific needs of the building you're restoring.

Lysaght Brownbuilt Industries,
P.O. Box 329, Crows Nest, 2065.
Please send me full information
on LBI Custom Blue Orb.

Name _____

Address _____

Postcode _____

LB185

 **Lysaght Brownbuilt Industries**

DIVISION OF JOHN LYSAGHT (AUSTRALIA) LIMITED

Sydney (02) 7094511. Albury (060) 253377. Tamworth (067) 654166.
Newcastle (049) 489655. Dubbo (068) 826922. Canberra (062) 806354.

Unique Gold Jewellery from France exclusive to Fairfax & Roberts



Exquisite brooches and bracelets in 18 ct. gold, intricately worked necklaces, all miracles of the Goldsmith's art. Each piece quite unique. What fascinating gifts! See the exclusive collection at Fairfax & Roberts' Sydney showroom.



*Fairfax &
Roberts*
JEWELLERS LIMITED