

The Lightband Organ

The organ has a rich history with several notable Nelsonian families, one of which helped found the gold mining industry in Golden Bay. It was manufactured in Canada and imported to New Zealand. It was purchased by William Alfred Lightband (1861-1948).

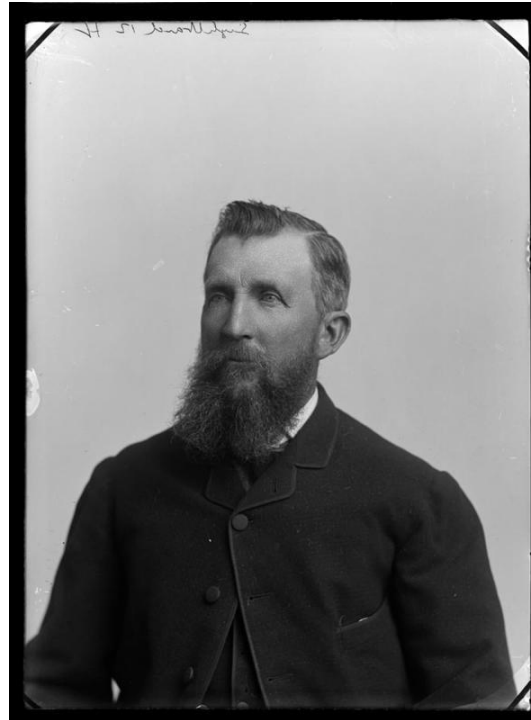
Mr Lightband gifted the organ to his wife Lillian Mary Lightband (1883-1967) when they got married.¹



<https://collection.nelsonmuseum.co.nz/objects/79631/lightband-wedding>

¹ Annette Walker provenance doc

The organ's purchaser, William A. Lightband, was the son of George William Wales Lightband² who opened the first payable goldfield in Golden Bay³ (before it was known as *Golden Bay*).⁴ George Lightband lived as a miner for 30 years, then went on to become a government warden and leading fruit grower in Waimea⁵.



<https://collection.nelsonmuseum.co.nz/objects/8202/lightband-mr-g-w-george-wales>

&

<https://collection.nelsonmuseum.co.nz/objects/39925/35888>

The instrument was inherited by the eldest daughter of the family for 3 generations before being donated to Isel House.⁶ Lillian Mary Lightband gave it to her daughter Lillian Grace

² Annette Walker provenance doc

³ <http://nzetc.victoria.ac.nz/tm/scholarly/tei-Cyc05Cycl-t1-body1-d1-d2-d5.html#Cyc05Cycl-fig-Cyc05Cycl130a>

⁴ <http://www.theprow.org.nz/enterprise/aorere-gold/#.YgWW2t9ByUk>

⁵ <http://nzetc.victoria.ac.nz/tm/scholarly/tei-Cyc05Cycl-t1-body1-d1-d2-d5.html#Cyc05Cycl-fig-Cyc05Cycl130a>

⁶ Annette Walker provenance doc

Walker who gave it to her daughter Annette Walker.⁷ Lillian Grace Walker was an active member of the Nelson Historical Society and married Keith Welsh Walker⁸ in 1933⁹. Keith Walker was a Nelson City Councillor for three terms¹⁰ and aided in the movement to build the museum on the grounds of Isel House¹¹.

⁷ Annette Walker provenance doc

⁸ Annette Walker provenance doc

⁹ <https://www.wikitree.com/genealogy/Cropp-Descendants-45>

¹⁰ <http://www.nelsoncity.co.nz/assets/Uploads/Candidate-profiles-2016.pdf>

¹¹ Annette Walker provenance doc