

History of Cleveland Point Lighthouses

The Queensland Heritage Registered old Lighthouse at Cleveland Point is significant in that it was associated with the early European settlement of Cleveland, it was one of the first lighthouses built in the colony of Queensland and was a prototype for subsequent timber-structured lighthouses.

It demonstrates rare aspects of Queensland's cultural heritage, being one of the few remaining polygonal lighthouses of its type in Queensland and the extant timber-structured, timber-clad 19th century lighthouse in Moreton Bay.



The old lighthouse was built in 1864-1865 by the Queensland government on an ungazetted reserve at Cleveland Point. It had a fixed kerosene light equal in power to a 6th order dioptric light, placed on the summit of the wooden tower nearly 40 feet above high tide level 10.6 metres.

The light was visible up to 9 miles (14.5kms) away and was used by small craft trading to Cleveland, the Logan River and other southern Moreton Bay areas. At the time most of the coastal land was farmed, and farmers used boats to send their crops to market in Brisbane and elsewhere.

Prior to the erection of this light, grazier the Hon. Francis Bigge MLA (NSW) had lobbied for a light there since the 1840s in order to establish Cleveland as the port for Moreton Bay and had erected several lights at his own expense, until eventually a government light was displayed there in early 1864 until the lighthouse was built. The wooden lighthouse is the only remaining reminder of Cleveland Point's role in early shipping, with other structures such as jetties now gone.

The 1864-1865 lighthouse was the first built in Queensland under the direction of the colony's first port master and marine surveyor, Captain G P Heath RN. The lighthouse's design made it relocatable if required as the sandy coastline channels constantly shifted and reformed.

The first lighthouse keeper was Alfred Winship, who was replaced in 1877 by James Troy. James, together with his children Jim and Johanna looked after the lighthouse until 1927, and they were the longest-serving lighthouse keepers in Australia. Following the Troys was Charles Klemm from 1927 until 1951, after which it had several keepers.

In 1874 the lens apparatus from Comboyuro Point light was placed in the Cleveland Point lighthouse, and then in 1979 this was replaced with an apparatus made in Birmingham England by the Chance brothers.

A red sector was incorporated into the light in 1920, then in 1943 the power source was changed to electricity and a round, concentrated filament lamp was placed inside the prisms of the light.



The lighthouse was re-sited and the light removed in 1975 to permit the construction and operation of a new light house at the established nautical position.

Some reconstruction of the old lighthouse occurred at this time, and the lens apparatus was removed and placed on display in the Redland City Council office tower.

Since being moved the lighthouse has been regularly repaired and repainted, including a restoration project in 2001.

In February 2009 RCC became aware of severe deterioration of timber elements of the lighthouse and sought specialist advice which identified the need for a variety of works some of which were deemed to be emergency works (this was completed July 2009). The conservation works were completed 13 September 2010 and included:

Emergency Works:

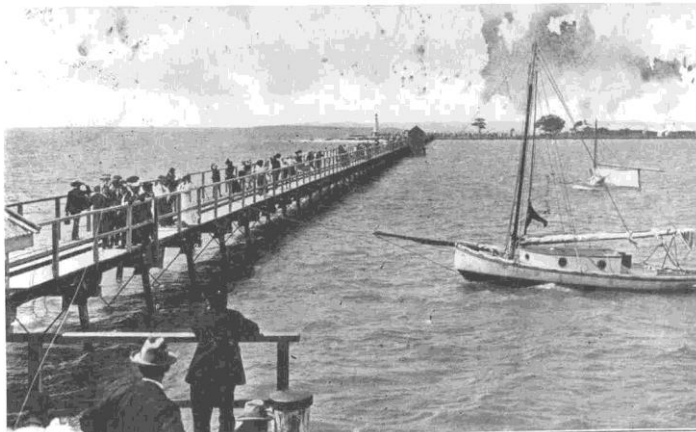
- ✚ Removal of damaged lower weatherboard & allow for structural engineer and pest control inspection
- ✚ Termite inspection, treatment and eradication
- ✚ Bracing to address poor bearer/post connections at the 2nd floor and main brace at ground floor

Conservation Works:

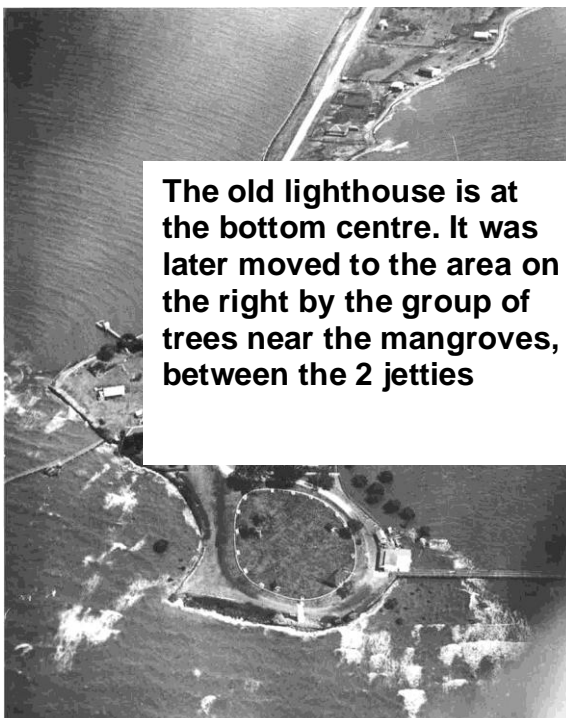
- ✚ Removal of damaged stop beads & weatherboards
- ✚ Installation of termi-mesh
- ✚ Replacement of damaged & bogged external stop beads
- ✚ Eradication of fungus flower & reinforcement damaged timber post
- ✚ Waterproofing to windows, roof & other points of precipitation egress
- ✚ Removal, rectification and replacement of canopy
- ✚ Reinforcement of damaged timber post to nth corner
- ✚ Repair & replacement of damaged timber to light platform
- ✚ Non urgent structural repairs
- ✚ Installation of structural reinforcing to reinforce connection between canopy & main structure
- ✚ Replacement of damaged weatherboards
- ✚ External painting
- ✚ Reinstatement of fabric block out shutters
- ✚ Repair & replacement of damaged metal elements

Newer Lighthouse:

The newer concrete lighthouse was erected in 1975. It was removed in 2009 to allow building of a movie set for the filming of **The Voyage of the Dawn Treader** (C.S. Lewis' Chronicles of Narnia). The light is no longer required for navigation safety; however council does currently have a project to replace it (2011).



A jetty at Cleveland Point – the lighthouse can be seen in the distance at the end of the Point.



Old Cleveland Point Lighthouse Lens.

In September 2008, Redland City Council accepted a proposal to house the old Cleveland Point Lighthouse Lens at the Redland Museum. Prior to this move, it was on display in the public viewing tower on top of the Council Administration Building.